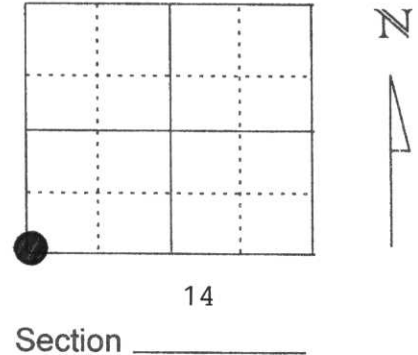


# U.S. PUBLIC LAND SURVEY MONUMENT RECORD

Note: This form is intended and designed to fulfill all requirements of Wisconsin Administrative Code, Chapter A-E 5.02, U.S. Public Land Survey Monument Record (3) (a) (b) (c) (d) (e) (f) (g) (h) (l). An additional sheet may be added if necessary to conform with said requirements.

(a) Corner location: Township 35 North  
 Range 6 East  
 Town/City/Village TN. BRADLEY  
 County Lincoln

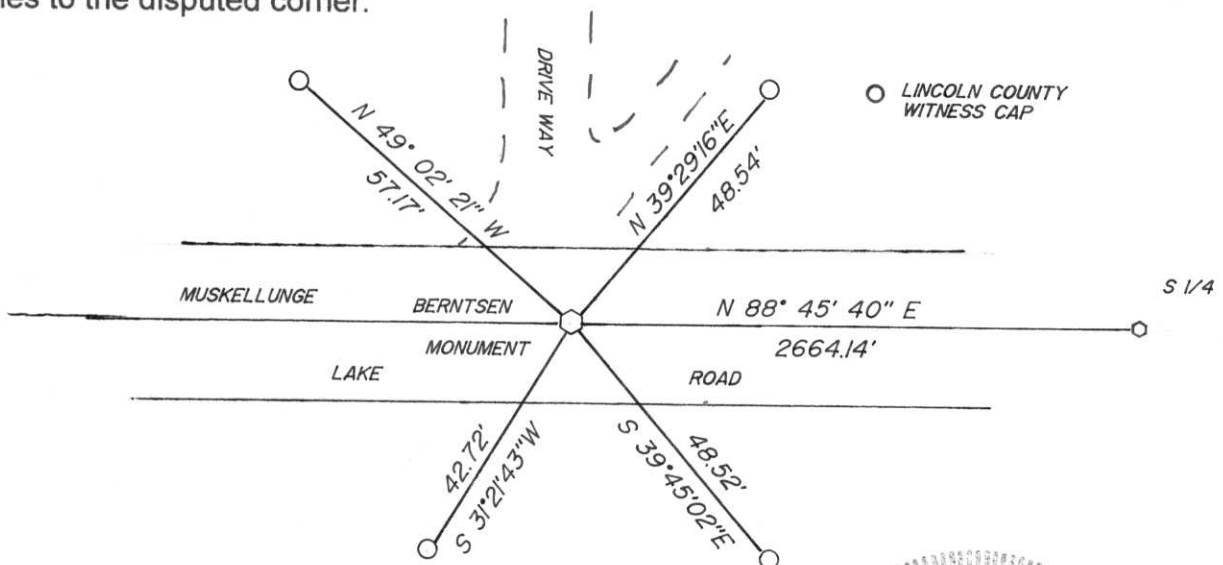


(b) (f) (g) (h) Description of monument found at this corner and if it was accepted, state all evidence (material, testimonial, occupational, plats, records, other monuments) used as a basis for accepting. If not accepted or if nothing was found, state evidence used as basis for establishing location. If reestablished through lost corner proportionate methods, indicate all monuments, distances and directions used to establish.

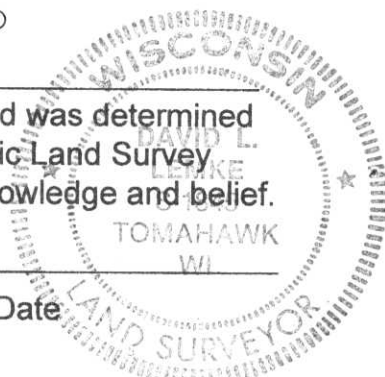
- 1861 - ALFRED MILLARD SET WOOD POST
- 1985 - LESTER SCHMIT SET A BERNTSEN MONUMENT
- 1999 - I FOUND ONE TIE ESTABLISHED BY SCHMIT IN 1985 AND SET 4 ADDITIONAL AS SHOWN

RECEIVED AT LINCOLN COUNTY  
 COURTHOUSE THIS 8th DAY  
 OF June 19 99  
*Pat Priebe*  
 LAND INFORMATION OFFICE

(c) (d) (e) Plan view of corner with ties to at least 4 witness monuments. If in disagreement with previously established corner, show the distances between the two corners and also indicate the ties to the disputed corner.



(l) I, DAVID L. LEMKE S-1845  
 (type or print name) certify that the corner location on this record was determined by me or under my direction and control and that this U.S. Public Land Survey Monument Record is correct and complete to the best of my knowledge and belief.  
*David Lemke*  
 Signature  
JUNE 3, 1999  
 Date



Index No. M-17

# U.S. PUBLIC LAND SURVEY MONUMENT RECORD

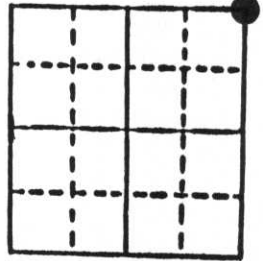
**Note:** This form is intended and designed to fulfill all requirements of Wisconsin Administrative Code, Chapter A-E 5.02, U.S. Public Land Survey Monument Record (3) (a) (b) (c) (d) (e) (f) (g) (h) (i). An additional sheet may be added if necessary to conform with said requirements.

(a) Corner location: Township 35 North

Range 6 East

Town Bradley

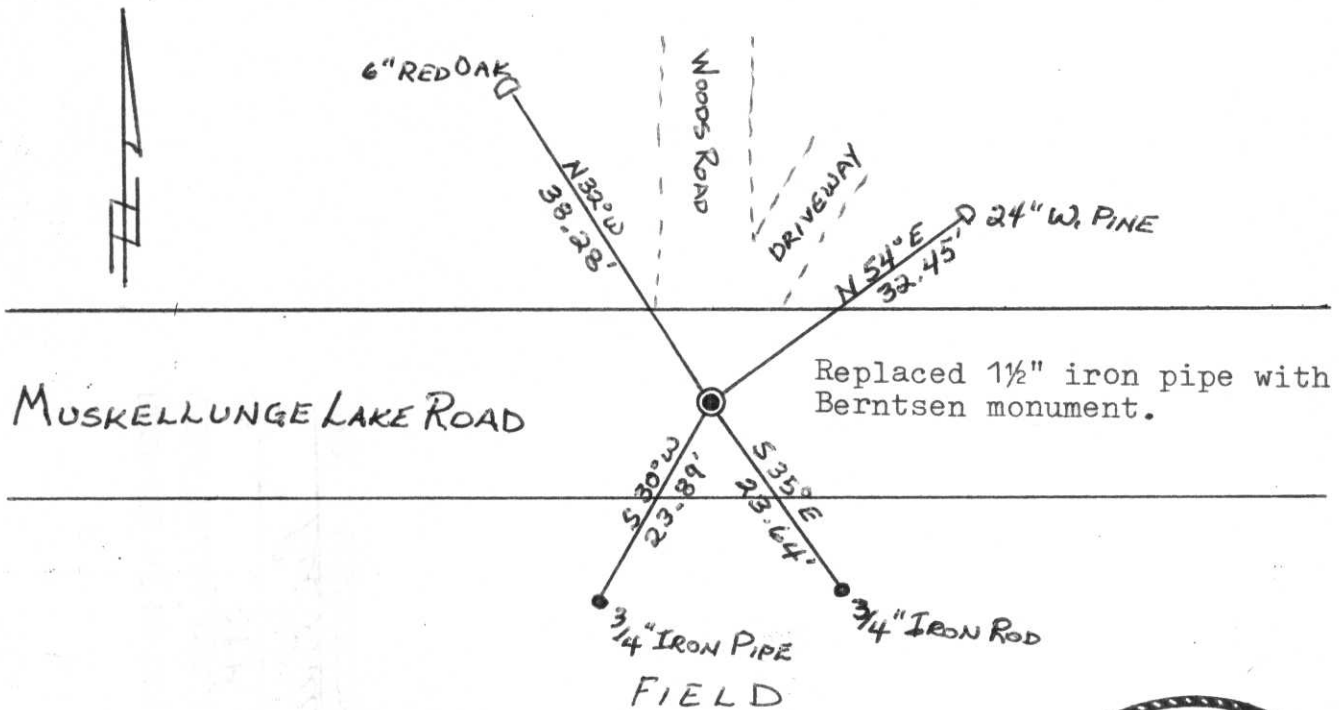
County Lincoln



Section 22

b) (f) (g) (h) Description of monument found at this corner and if it was accepted, state all evidence (material, testimonial, occupational, plats, records, other monuments) used as a basis for accepting. If not accepted or if nothing was found, state evidence used as basis for establishing location. If reestablished through lost corner proportionate methods, indicate all monuments, distances and directions used to establish. Original Gov't. Survey: July 1861 by Alfred Millard, set wood post for corner with bearing, yellow pine 6 N 45° E 21 links & spruce 7 S 45° W 8 links. I found a 1½" iron pipe in the centre of Muskellunge Lake Road for the corner, witnessed by Alma M. Rosche, a very long time resident and owner of the lands to the north of the corner.

c) (d) (e) Plan view of corner with ties to at least 4 witness monuments. If in disagreement with previously established corner, show the distances between the two corners and also indicate the ties to the disputed corner.



(i) I, Lester J. Schmit  
 (type or print name) certify that the corner location on this record was determined by me or under my direction and control and that this U.S. Public Land Survey Monument Record is correct and complete to the best of my knowledge and belief.

Lester J. Schmit 9 Sep 85  
 Signature Date



Index No. M-17