

# U.S. PUBLIC LAND SURVEY MONUMENT RECORD

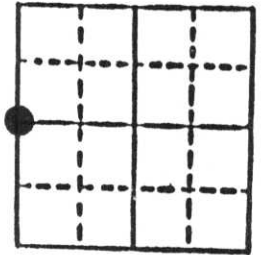
**Note:** This form is intended and designed to fulfill all requirements of Wisconsin Administrative Code, Chapter A-E 5.02, U.S. Public Land Survey Monument Record (3) (a) (b) (c) (d) (e) (f) (g) (h) (i). An additional sheet may be added if necessary to conform with said requirements.

(a) Corner location: Township 35 North

Range 6 East

Town Bradley

County Lincoln

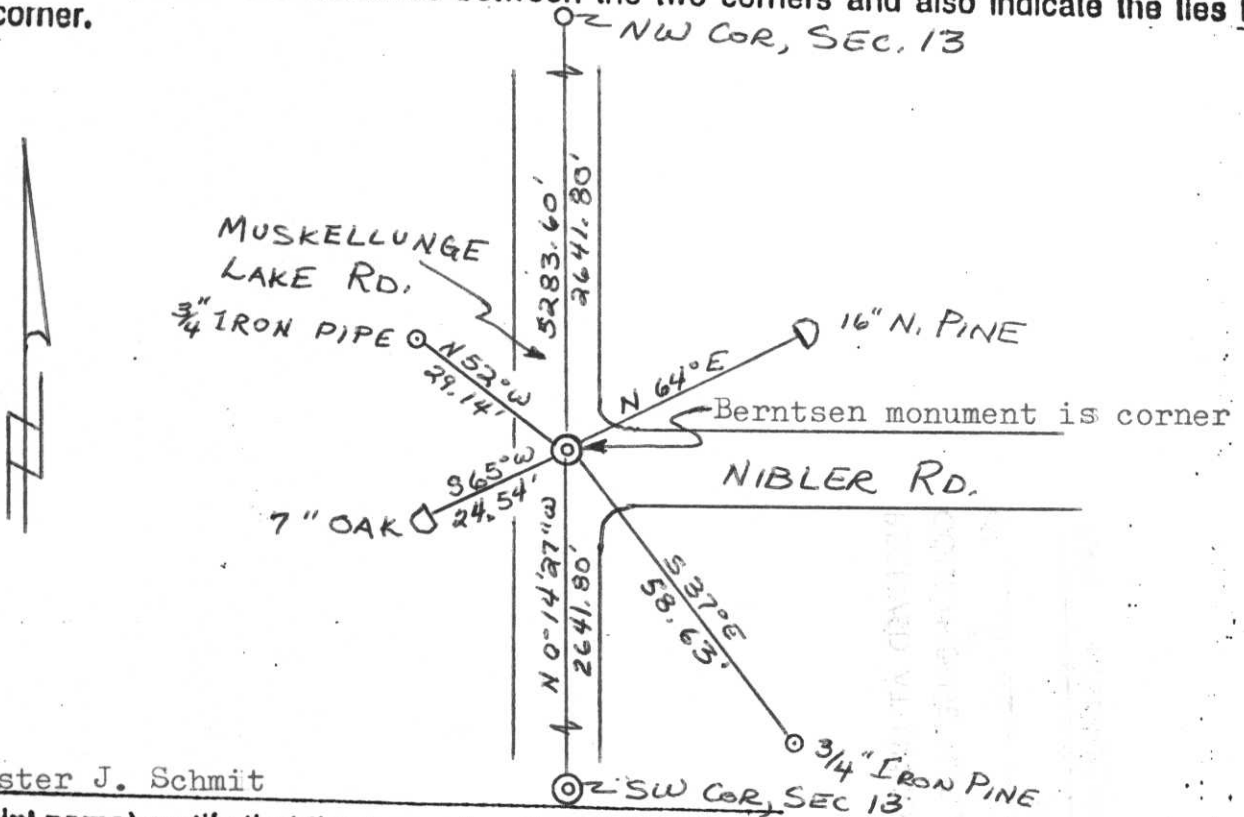


Section 13

b) (f) (g) (h) Description of monument found at this corner and if it was accepted, state all evidence (material, testimonial, occupational, plats, records, other monuments) used as a basis for accepting. If not accepted or if nothing was found, state evidence used as basis for establishing location. If reestablished through lost corner proportionate methods, indicate all monuments, distances and directions used to establish.

Original Gov't Survey: July 1861 by Alfred Millard, set wood post for corner with bearings, yellow pine 14 S 40° W 92 links & yellow pine 15 S 32° E 181 links. Set a Berntsen monument by single proportion measurement between section corners. The corner is 2' east of the center-line of Muskellunge Lake Road & 10' north of the center-line of Nibler Road.

c) (d) (e) Plan view of corner with ties to at least 4 witness monuments. If in disagreement with previously established corner, show the distances between the two corners and also indicate the ties to the disputed corner.



(i) I, Lester J. Schmit

(type or print name) certify that the corner location on this record was determined by me or under my direction and control and that this U.S. Public Land Survey Monument Record is correct and complete to the best of my knowledge and belief.

Lester J. Schmit  
Signature

7 Nov. 88  
Date

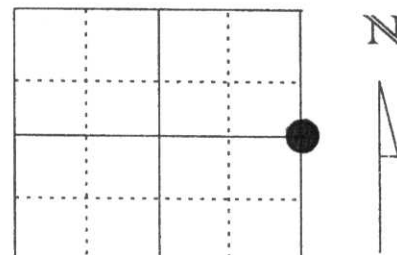


Index No. K-21

# U.S. PUBLIC LAND SURVEY MONUMENT RECORD

Note: This form is intended and designed to fulfill all requirements of Wisconsin Administrative Code, Chapter A-E 5.02, U.S. Public Land Survey Monument Record (3) (a) (b) (c) (d) (e) (f) (g) (h) (l). An additional sheet may be added if necessary to conform with said requirements.

(a) Corner location: Township 35 North  
 Range 6 East  
 Town/City/Village TN BRADLEY  
 County Lincoln

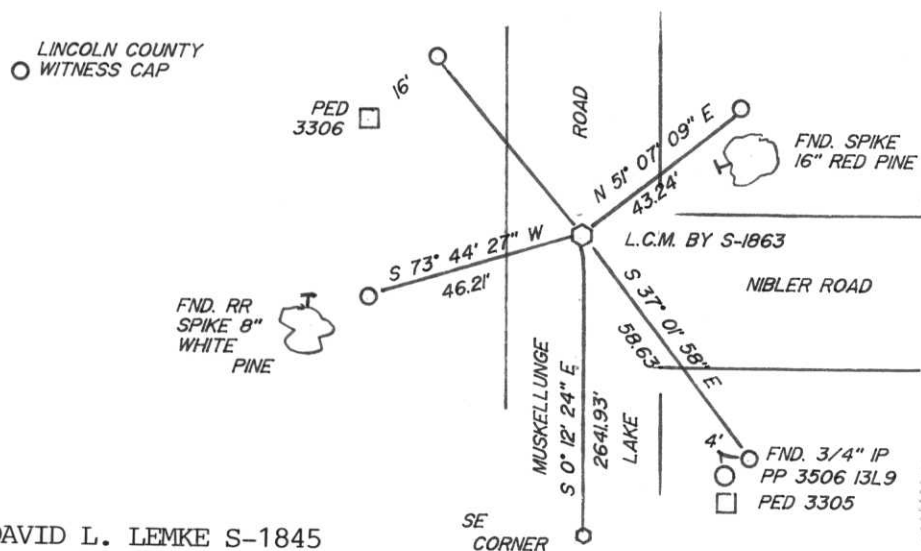


Section 14

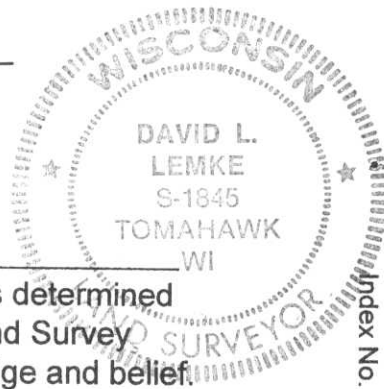
(b) (f) (g) (h) Description of monument found at this corner and if it was accepted, state all evidence (material, testimonial, occupational, plats, records, other monuments) used as a basis for accepting. If not accepted or if nothing was found, state evidence used as basis for establishing location. If reestablished through lost corner proportionate methods, indicate all monuments, distances and directions used to establish.

- 1860 - ALFRED MILLARD SET WOOD POST
- 1988 - LESTER SCHMIT SET BERNTSEN MONUMENT
- 1991 - DENNIS ROBERTS FOUND BERNTSEN MONUMENT BY SCHMIT
- 1993 - DENNIS ROBERTS RESET MONUMENT DURNING ROAD CONSTRUCTION
- 1999 - I FOUND THREE OF THE WITNESS TIES ESTABLISHED BY ROBERTS AND SET THREE ADDITIONAL TIES AS SHOWN.

(c) (d) (e) Plan view of corner with ties to at least 4 witness monuments. If in disagreement with previously established corner, show the distances between the two corners and also indicate the ties to the disputed corner.



RECEIVED AT LINCOLN COUNTY  
 COURTHOUSE THIS 8th DAY  
 OF June 19 99  
*Pat Preke*  
 LAND INFORMATION OFFICE



(l) I, DAVID L. LEMKE S-1845  
 (type or print name) certify that the corner location on this record was determined by me or under my direction and control and that this U.S. Public Land Survey Monument Record is correct and complete to the best of my knowledge and belief.  
*David L. Lemke* JUNE 3, 1999  
 Signature Date

Index No. K-21

# U.S. PUBLIC LAND SURVEY MONUMENT RECORD

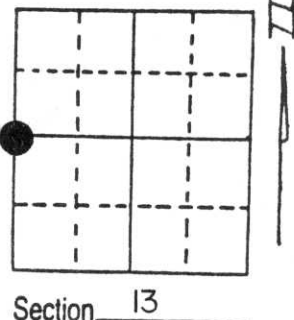
Note: This form is intended and designed to fulfill all requirements of Wisconsin Administrative Code, Chapter A-E 5.02, U.S. Public Land Survey Monument Record (3) (a) (b) (c) (d) (e) (f) (g) (h) (i). An additional sheet may be added if necessary to conform with said requirements.

(a) Corner location: Township 35 North

Range 6 East

Town/City/Village Bradley

County Lincoln



(b) (f) (g) (h) Description of monument found at this corner and if it was accepted, state all evidence (material, testimonial, occupational, plats, records, other monuments) used as a basis for accepting. If not accepted or if nothing was found, state evidence used as basis for establishing location. If reestablished through lost corner proportionate methods, indicate all monuments, distances and directions used to establish.

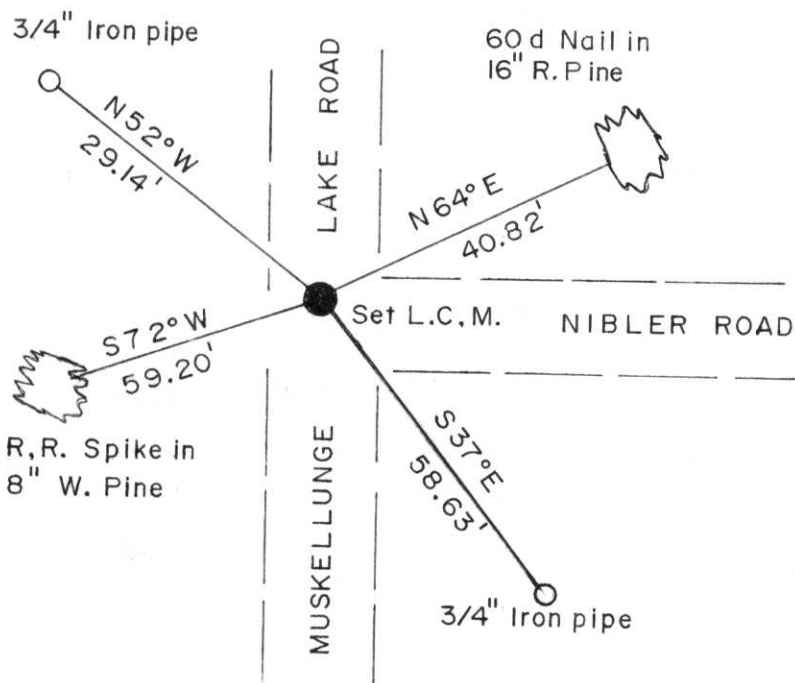
-1860 Alfred Millard established original corner; set 1/4 post B.T.'s Y. pine 14" S40°W 92 links, Y. pine 15" S32° E 181 links.

-1988 Lester J. Schmit, set a Berntsen Monument by single proportion measurement between section corners.

-1991 I found Berntsen set be Lester J. Schmit.

-1993 I set Berntsen Monument and witnessed it as shown below. (Note: Monument set by Lester J. Schmit was broken during road construction).

(c) (d) (e) Plan view of corner with ties to at least 4 witness monuments. If in disagreement with previously established corner, show the distances between the two corners and also indicate the ties to the disputed corner.



—Magnetic Bearings Taken With Handheld Compass  
—No Scale



(i) I, Dennis B. Roberts

(type or print name) certify that the corner location on this record was determined by me or under my direction and control and that this U.S. Public Land Survey Monument Record is correct and complete to the best of my knowledge and belief.

Signature

Date

Dennis B. Roberts      8-26-93



Index No. K-21