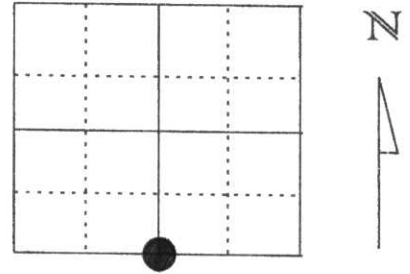


# U.S. PUBLIC LAND SURVEY MONUMENT RECORD

Note: This form is intended and designed to fulfill all requirements of Wisconsin Administrative Code, Chapter A-E 5.02, U.S. Public Land Survey Monument Record (3) (a) (b) (c) (d) (e) (f) (g) (h) (l). An additional sheet may be added if necessary to conform with said requirements.

(a) Corner location: Township 35 North  
 Range 6 East  
 Town/City/Village TN. BRADLEY  
 County Lincoln



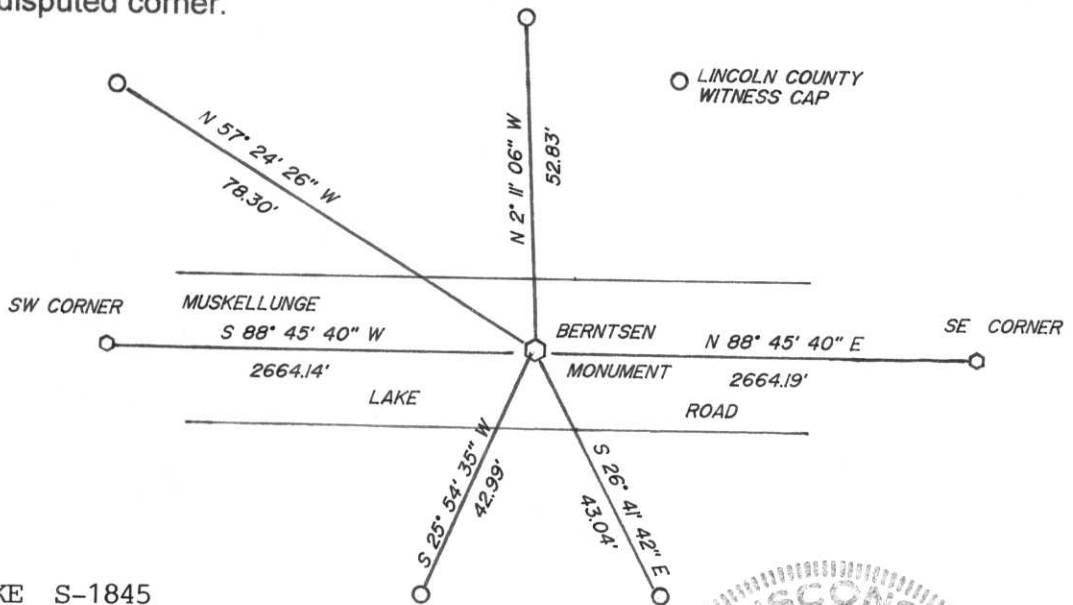
Section 14

(b) (f) (g) (h) Description of monument found at this corner and if it was accepted, state all evidence (material, testimonial, occupational, plats, records, other monuments) used as a basis for accepting. If not accepted or if nothing was found, state evidence used as basis for establishing location. If reestablished through lost corner proportionate methods, indicate all monuments, distances and directions used to establish.

- 1861 - ALFRED MILLARD SET WOOD POST
- 1976 - LESTER SCHMITZ RE-ESTABLISHED CORNER POSITION FOR A SURVEY IN SECTION 23. SEE MAP M-71
- 1999 - I SET WITNESS CAPS FOR CORNER POSITION PER MAP M-71

**RECEIVED AT LINCOLN COUNTY  
 COURTHOUSE THIS 8th DAY  
 OF June 19 99  
*Pat Priebe*  
**LAND INFORMATION OFFICE****

(c) (d) (e) Plan view of corner with ties to at least 4 witness monuments. If in disagreement with previously established corner, show the distances between the two corners and also indicate the ties to the disputed corner.

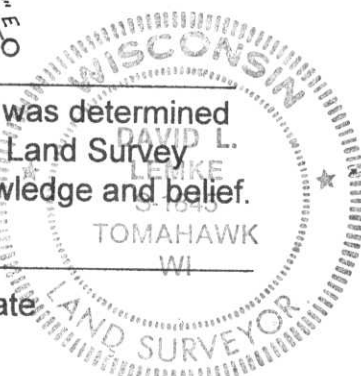


(l) I, DAVID L. LEMKE S-1845

(type or print name) certify that the corner location on this record was determined by me or under my direction and control and that this U.S. Public Land Survey Monument Record is correct and complete to the best of my knowledge and belief.

Signature *David Lemke*

Date JUN 3, 1999



Index No. M-19