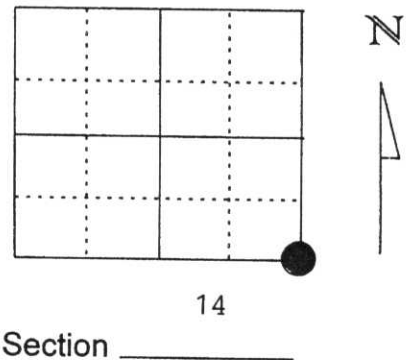


U.S. PUBLIC LAND SURVEY MONUMENT RECORD

Note: This form is intended and designed to fulfill all requirements of Wisconsin Administrative Code, Chapter A-E 5.02, U.S. Public Land Survey Monument Record (3) (a) (b) (c) (d) (e) (f) (g) (h) (i). An additional sheet may be added if necessary to conform with said requirements.

(a) Corner location: Township 35 North
 Range 6 East
 Town/City/Village TN. BRADLEY
 County Lincoln

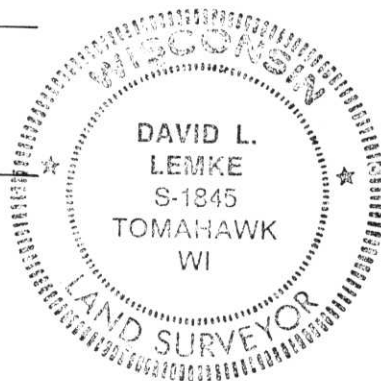
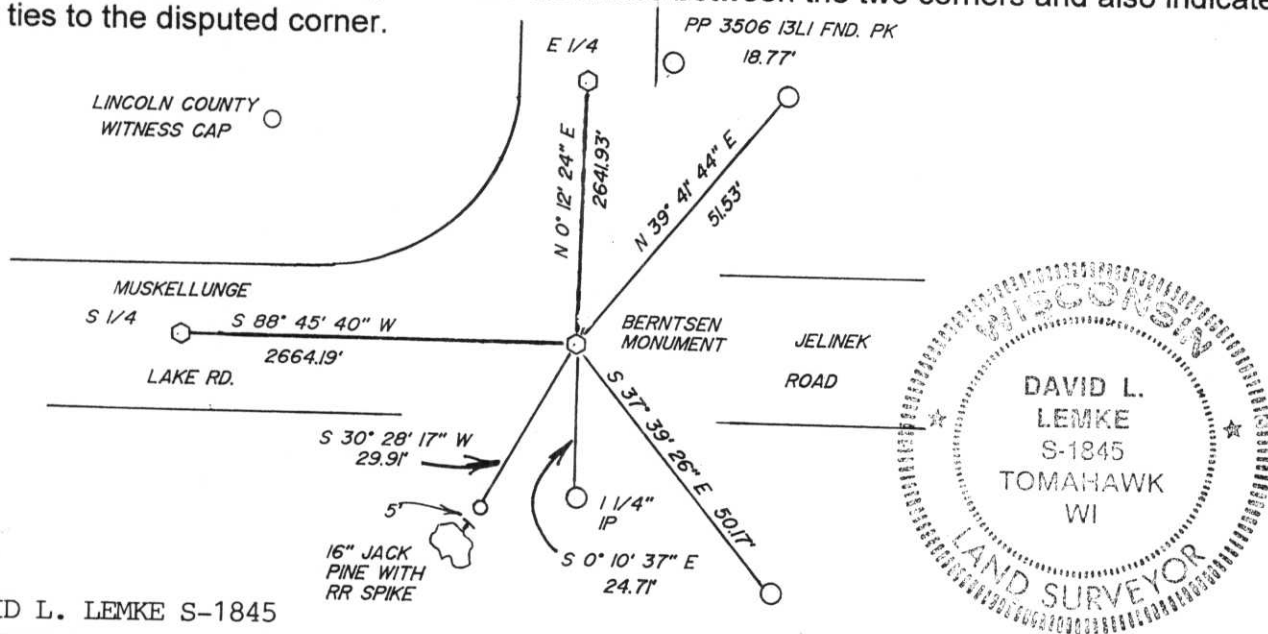


(b) (f) (g) (h) Description of monument found at this corner and if it was accepted, state all evidence (material, testimonial, occupational, plats, records, other monuments) used as a basis for accepting. If not accepted or if nothing was found, state evidence used as basis for establishing location. If reestablished through lost corner proportionate methods, indicate all monuments, distances and directions used to establish.

1860 - ALFRED MILLARD SET WOOD POST
 1973 - BOB WINAT SET A BERNTSEN MONUMENT AND 3 WITNESS TIES TO CORNER
 JUNE 3, 1999 - I FOUND 2 OF WINAT'S TIES AND SET 4 ADDITIONAL.
 OCTOBER 5, 1999 ROAD CONSTRUCTION TOOK OUT TWO OF THE WITNESS TIES I SET IN JUNE. I RESET THOSE WITNESS CAPS AS SHOWN.

**RECEIVED AT LINCOLN COUNTY
 COURTHOUSE THIS 5th DAY
 OF Oct 19 99
Pat Priebe
LAND INFORMATION OFFICE**

(c) (d) (e) Plan view of corner with ties to at least 4 witness monuments. If in disagreement with previously established corner, show the distances between the two corners and also indicate the ties to the disputed corner.



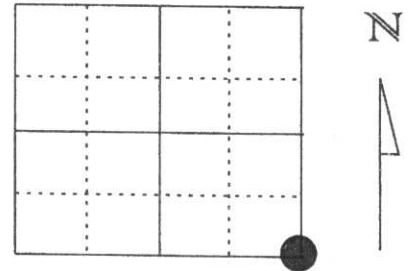
(i) I, DAVID L. LEMKE S-1845
 (type or print name) certify that the corner location on this record was determined by me or under my direction and control and that this U.S. Public Land Survey Monument Record is correct and complete to the best of my knowledge and belief.
David L. Lemke
 Signature 10-4-99
Date

Index No. M-21

U.S. PUBLIC LAND SURVEY MONUMENT RECORD

Note: This form is intended and designed to fulfill all requirements of Wisconsin Administrative Code, Chapter A-E 5.02, U.S. Public Land Survey Monument Record (3) (a) (b) (c) (d) (e) (f) (g) (h) (i). An additional sheet may be added if necessary to conform with said requirements.

(a) Corner location: Township 35 North
 Range 6 East
 Town/City/Village TN. BRADLEY
 County Lincoln

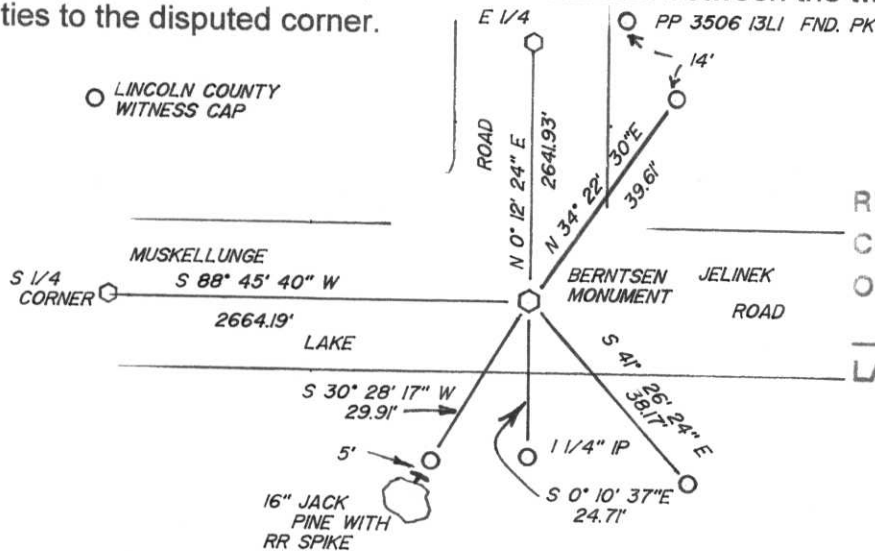


Section 14

(b) (f) (g) (h) Description of monument found at this corner and if it was accepted, state all evidence (material, testimonial, occupational, plats, records, other monuments) used as a basis for accepting. If not accepted or if nothing was found, state evidence used as basis for establishing location. If reestablished through lost corner proportionate methods, indicate all monuments, distances and directions used to establish.

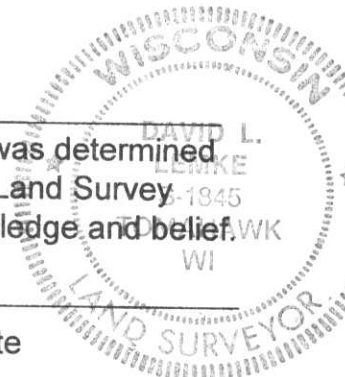
- 1860 - ALFRED MILLARD SET WOOD POST
- 1973 - BOB WINAT SET A BERNTSEN MONUMENT AND 3 WITNESS TIES TO CORNER.
- 1999 - I FOUND 2 OF WINAT'S TIES AND SET 4 ADDITIONAL AS SHOWN.

(c) (d) (e) Plan view of corner with ties to at least 4 witness monuments. If in disagreement with previously established corner, show the distances between the two corners and also indicate the ties to the disputed corner.



RECEIVED AT LINCOLN COUNTY
 COURTHOUSE THIS 8th DAY
 OF June 19 99
Pat Probe
 LAND INFORMATION OFFICE

(i) I, DAVID L. LEMKE S-1845
 (type or print name) certify that the corner location on this record was determined
 by me or under my direction and control and that this U.S. Public Land Survey
 Monument Record is correct and complete to the best of my knowledge and belief.
David Lemke JUNE 3, 1999
 Signature Date



Index No. M-21

different M-21

12

Section Corner $\frac{14}{13}$ T354,RCE
 $\frac{21}{24}$ DNDT(LUC.CO.)

30 Oct. 1972 WINAT, SPRISTER
 Since no evidence found @ rd. ixion (digging on 25 Oct '72)
 check measured from E STREAM WEST OF CORNER - 5' short to ixion.
 " " " W/E SWAMP EAST " - 20' short to ixion.
 " " " NIL " South - 100' long to ixion.
 " " " & MOUNTAIN DR. TO '8COR. (SOUTH) 1310' extend along
 MUSKELLUNGE LAKE RD. 1312' to ixion.

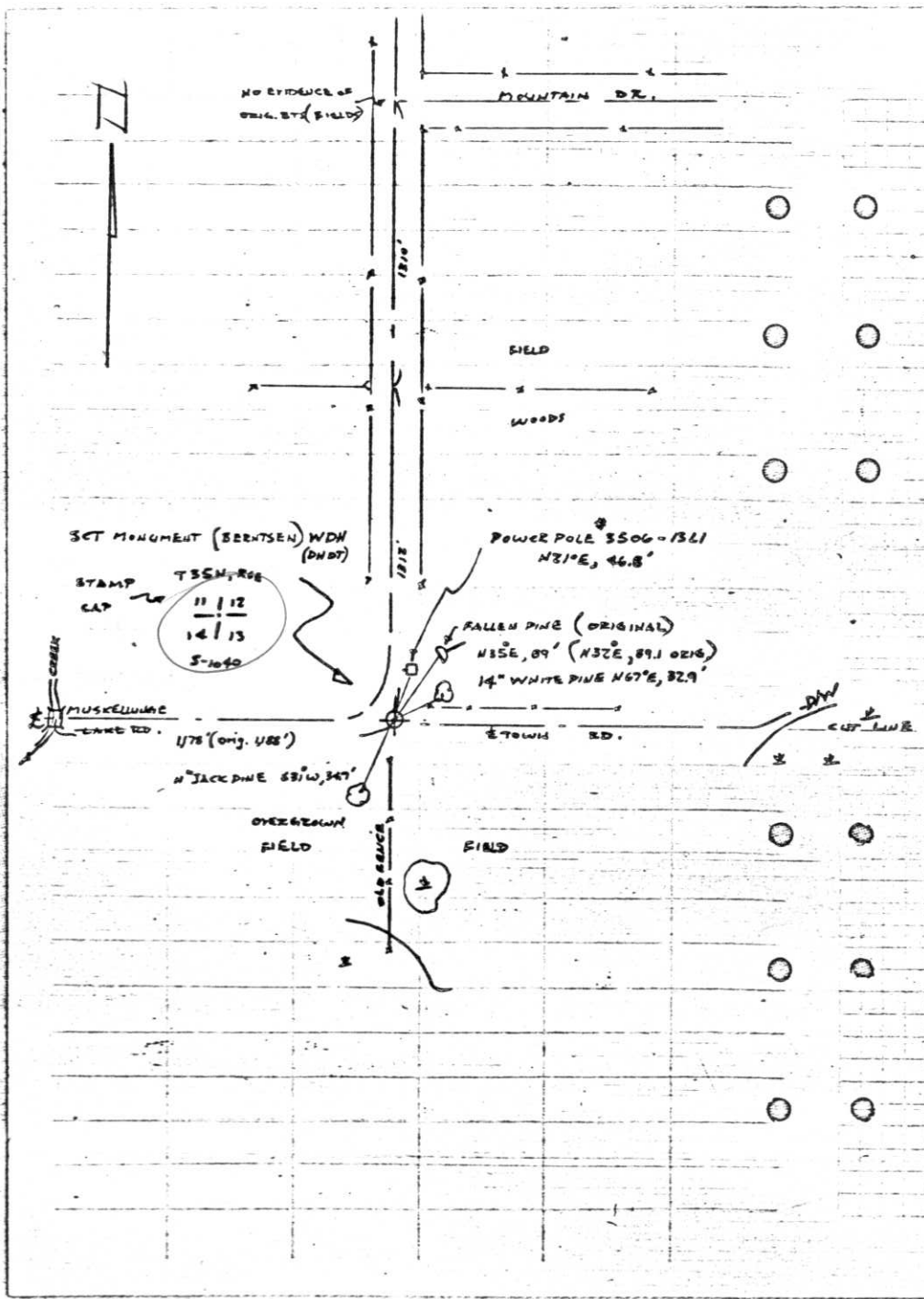
31 Oct. '72 WINAT, SPRISTER
 Searched for further evidence SW (ORIGINAL) BT FALLS
 IN OLD FIELD, NW (ORIG.) BT FALLS IN CURVE OF MUSKELLUNGE
 LAKE RD. HOWEVER NE ORIG BT. FALLS IN WOODS. FIND PINE
 TREE REMAINS AT N35°E, 88'-89' (FALLEN OVER TO EAST (VERY
 ROTTEN) OTHER TREES IN AREA ARE LOW STUMPS-ORIG. GROWTH.
 BELIEVE WE HAVE ORIG. TREE SINCE FEUCE TO SOUTH FITS OK
 C' IXION OF ROADS USING ORIG. DISTANCE - 89.1' SET. CORNER.

1 Nov. '72 WINAT, SPRISTER
 Set 36°XG° BERNTSEN ALUM. MONT. & MADE TIES.
 17 Nov. '72 30° MENUNEN, SPRISTER
 STAMPED CAP and made BTs.

SW 13-35-6

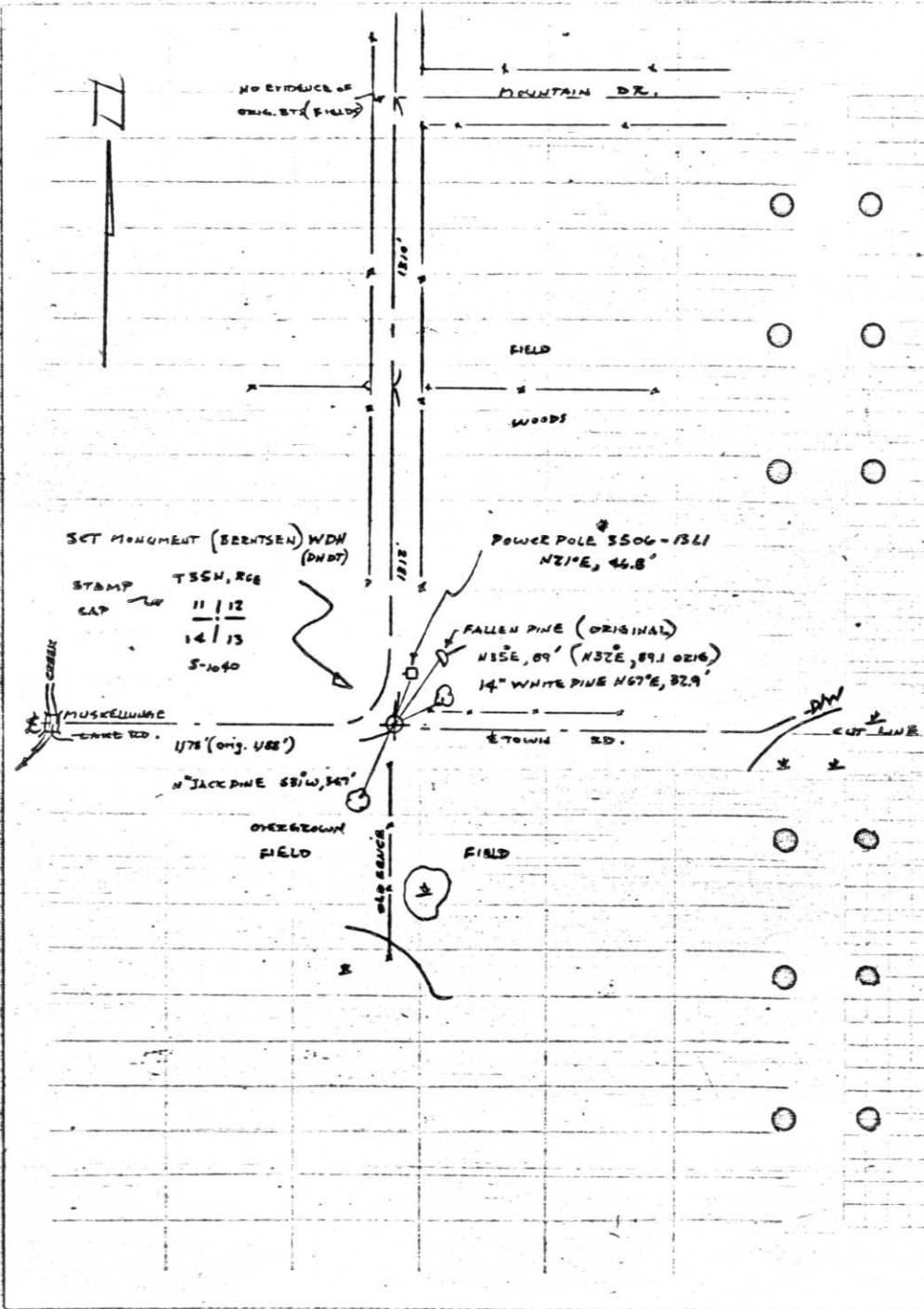
Robert Winat, Northwoods Surveyor
 Copies of work done for Division
 of Hwys. Received Feb. 1973

100.



Section Corner $\frac{14}{23} \frac{13}{24}$ T35N, R6E

DNDT (LUC. CO.)



30 Oct. 1972

WINAT, SPRISTER

Since no evidence found @ rd. ixion (digging on 25 Oct 72)
 check measured from E STREAM WEST OF CORNER - 5' short to ixion.
 " " " W/E SWAMP EAST " - 20' short to ixion.
 " " " NIL " South " - 100' long to ixion.
 & MOUNTAIN DR. TO 'COR. (SOUTH) 1310' extend along
 MUSKELLUNGE LAKE RD. 1312' to ixion.

31 Oct. 72

WINAT, SPRISTER

Searched for further evidence SW (ORIGINAL) BT FALLS
 IN OLD FIELD, NW (ORIG.) BT FALLS IN CURVE OF MUSKELLUNGE
 LAKE RD. HOWEVER NE ORIG BT. FALLS IN WOODS. FIND PINE
 TREE REMAINS AT H35°E, 88'-89' (FALLEN OVER TO EAST VERY
 ROTTEN) OTHER TREES IN AREA ARE LOW STUMPS-ORIG. GROWTH.
 BELIEVE WE HAVE ORIG. TREE SINCE FEUCE TO SOUTH FITS OK
 @ IXION OF ROADS USING ORIG. DISTANCE - 89.1' SET. CORNER.

1 Nov. 72

WINAT, SPRISTER

Set 36"x6" BEERTSEN ALUM. MONT. & MADE TIES.

17 Nov. 72 30°

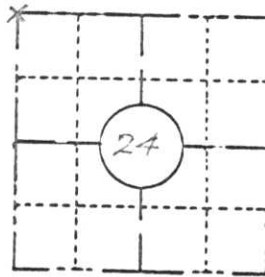
WINAT, SPRISTER

STAMPED CAP and made B.TS.

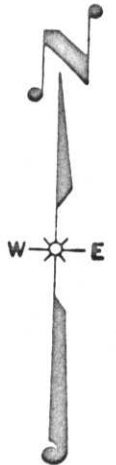
FIELD SURVEY NOTES
PRESERVATION OF LANDMARKS
 (Pursuant to Section 59.635(7) Wisconsin Statutes)

Wisconsin Department of Transportation
 E-D-707-87

COUNTY <i>Lincoln</i>		
TOWN <i>Bradley</i>		
HIGHWAY <i>U.S.H. 51 FREEWAY</i>		
SECTION <i>24</i>	TOWNSHIP <i>T35 N</i>	RANGE <i>R 6 E</i>
TYPE OF LANDMARK <i>Section Corner</i>		



LOCATION SKETCH
 (Location of landmark indicated by "x")

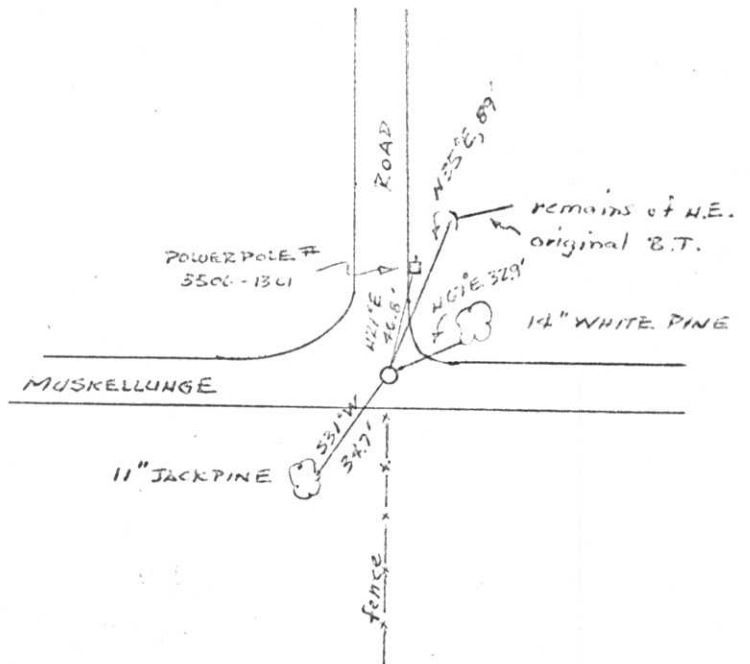


This space for copy of field notes or ties to the above described landmarks

Found evidence of Alfred Millard's
 NE bearing tree as set in Oct. 1860.
 (W. PINE 12" N32°E, 135' LK) at N35°E, 89'
 remains of wind blown pine rampike.
 Fits road intersection $\frac{1}{2}$ old fence to south.

No evidence of corner monument found
 below pavement (approx. 1-2' below original
 surface). Rocky digging by Grad-ALL.

Set Berntsen Aluminum monument from
 B.T. $\frac{1}{2}$ intersection of roads and fences.
 Made new bearing trees.



FILED UNDER PROJECT <i>USH 51 FREEWAY</i>		COUNTY CLERK'S OFFICE	
NUMBER <i>I.D. 1173-0-03</i>		COUNTY OF <i>Lincoln</i> WISCONSIN } ss	
SHC DISTRICT OFFICE NUMBER <i>7</i>	CITY	DATE RECEIVED FOR RECORD <i>1/26/73</i>	DATE COPY SENT TO COUNTY SURVEYOR <i>2</i>
LOCATED OR ESTABLISHED BY <i>NORTHWOODS SURVEYORS, INC.</i>		SIGNATURE OF COUNTY CLERK <i>Ken Oldenberg</i>	
NAME <i>Robert F. Morak</i>			
TITLE <i>Land Surveyor 3-1040</i> DATE <i>Dec. 1972</i>			

M-21

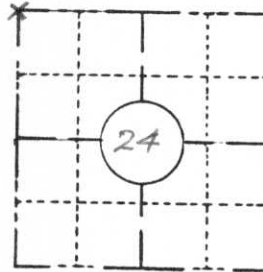
FIELD SURVEY NOTES

PRESERVATION OF LANDMARKS

(Pursuant to Section 59.635(7) Wisconsin Statutes)

Wisconsin Department of Transportation
E-D-707-87

COUNTY <i>Lincoln</i>		
TOWN <i>Bradley</i>		
HIGHWAY <i>U.S.H. 51 FREEWAY</i>		
SECTION <i>24</i>	TOWNSHIP <i>T35 N</i>	RANGE <i>R6E</i>
TYPE OF LANDMARK <i>Section Corner</i>		



LOCATION SKETCH
(Location of landmark indicated by "x")

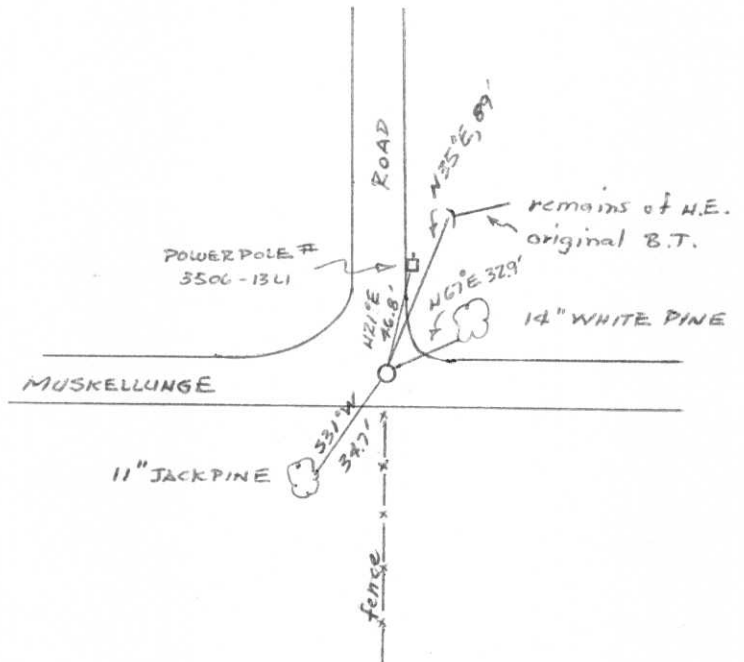


This space for copy of field notes or ties to the above described landmarks

Found evidence of Alfred Millard's
NE Bearing tree as set in Oct. 1860.
(W. PINE 12" N32°E, 135 Lks.) at N35°E, 89'
remains of wind blown pine rampike.
Fits road intersection $\frac{1}{2}$ ' old fence to south.

No evidence of corner monument found
below pavement (approx. 1-2' below original
surface). Rocky digging by Grad-ALL.

Set Berntsen aluminum monument from
B.T. $\frac{1}{2}$ ' intersection of roads and fences.
Made new Bearing trees.



FILED UNDER PROJECT <i>USH 51 FREEWAY</i>		
NUMBER <i>I.D. 1173-0-03</i>		
SHC DISTRICT OFFICE NUMBER <i>7</i>	CITY	COUNTY <i>Lincoln</i>
LOCATED OR ESTABLISHED BY <i>NORTHWOODS SURVEYORS, INC.</i>		
NAME <i>Robert H. Hornak</i>		
TITLE <i>Land Surveyor S-1040</i> DATE <i>Dec. 1972</i>		

COUNTY CLERK'S OFFICE	
COUNTY OF <i>Lincoln</i>	WISCONSIN } SS
DATE RECEIVED FOR RECORD <i>1/26/73</i>	DATE COPY SENT TO COUNTY SURVEYOR <i>2</i>
SIGNATURE OF COUNTY CLERK <i>Ken Oldenburg</i>	

M-21