

U.S. PUBLIC LAND SURVEY MONUMENT RECORD

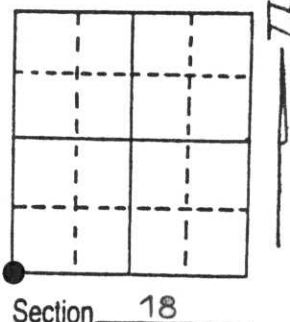
Note: This form is intended and designed to fulfill all requirements of Wisconsin Administrative Code, Chapter A-E 5.02, U.S. Public Land Survey Monument Record (3) (a) (b) (c) (d) (e) (f) (g) (h) (i). An additional sheet may be added if necessary to conform with said requirements.

(a) Corner location: Township 35 North

Range 7 East

Town/City/Village King

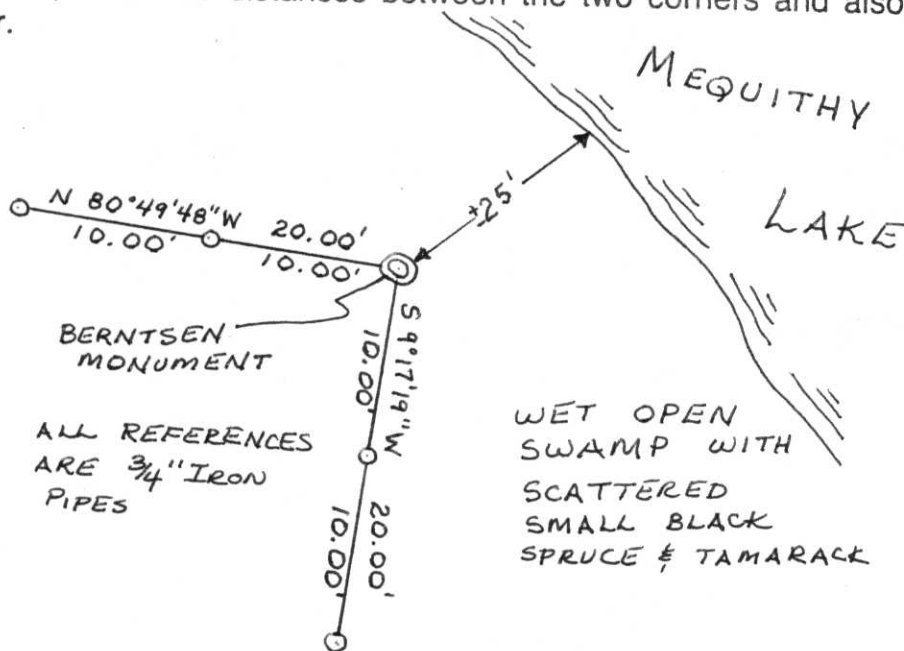
County Lincoln



(b) (f) (g) (h) Description of monument found at this corner and if it was accepted, state all evidence (material, testimonial, occupational, plats, records, other monuments) used as a basis for accepting. If not accepted or if nothing was found, state evidence used as basis for establishing location. If reestablished through lost corner proportionate methods, indicate all monuments, distances and directions used to establish. Original Gov't. Survey: August 1860 by James Marsh, set wood post for corner with bearings, yellow pine 10 S 27° E 4.50 links & tamarac 4 N 81° E 27 links. I found the 1½" iron pipe & 5" x 5" cedar post set by Owens Illinois and found by Munninghoff of the D.O.T. in 1971. I set a Berntsen monument to replace the iron pipe for the corner.

RECEIVED AT LINCOLN COUNTY
COURTHOUSE THIS 7th DAY
OF June 1994
Pat Pirie
TAX DESCRIPTION OFFICE

(c) (d) (e) Plan view of corner with ties to at least 4 witness monuments. If in disagreement with previously established corner, show the distances between the two corners and also indicate the ties to the disputed corner.



(i) I, Lester J. Schmit
(type or print name) certify that the corner location on this record was determined by me or under my direction and control and that this U.S. Public Land Survey Monument Record is correct and complete to the best of my knowledge and belief.

Lester J. Schmit 9 May 94
Signature Date



Index No. M-1

103.

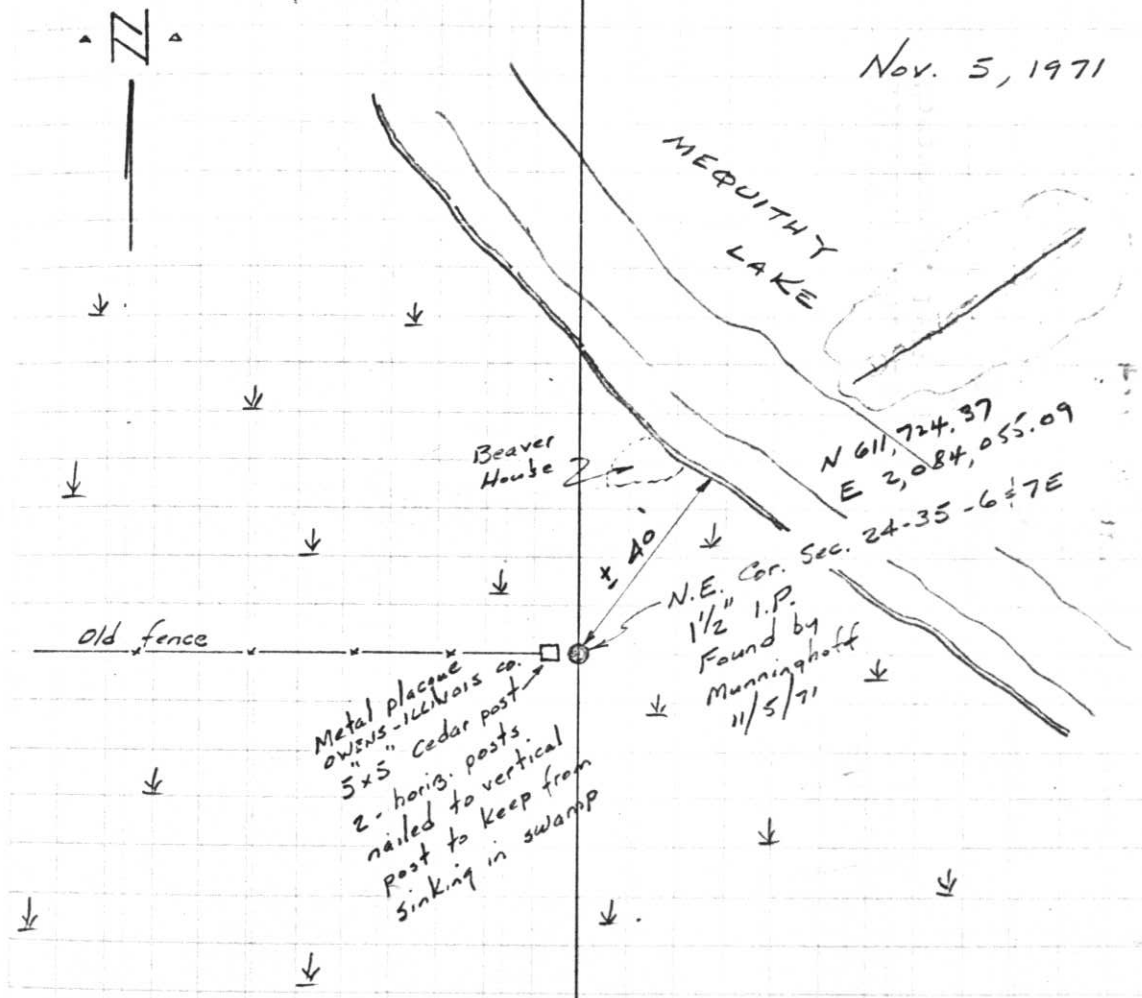
Project I.D. 1173-3-00 C.T.H. "S"
U.S.H. 8 U.S.H. 51 Freeway Lincoln
Co. Wm. Scherer Surveyor Received
from Division of Hwy's Jan. 11, 1973

M-25

T35N

R 6 1/2 E

Nov. 5, 1971



Note: No reference ties available.