

# U.S. PUBLIC LAND SURVEY MONUMENT RECORD

NOTE: THIS FORM IS INTENDED AND DESIGNED TO FULFILL ALL REQUIREMENTS OF WISCONSIN ADMINISTRATIVE CODE, CHAPTER A-E 7.08, U.S. PUBLIC LAND SURVEY MONUMENT RECORD (3)(a)(b)(c)(d)(e)(f)(g)(h)(i). ADDITIONAL SHEETS MAY BE NECESSARY TO CONFORM TO SAID REQUIREMENTS.

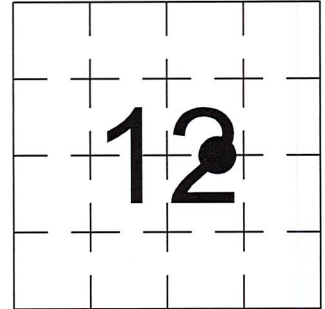
T 35 N, R 6 E

**(a) CORNER LOCATION:**

MEANDER CORNER, SECTION 12  
 TOWNSHIP 35 NORTH  
 RANGE 6 EAST  
 TOWN OF BRADLEY  
 LINCOLN COUNTY  
 WISCONSIN

**(b) HISTORY OF ORIGINAL CORNER:**

ORIGINAL SURVEYOR: JOHN H. FISHER, 2" PIPE  
 COMMENCING DATE:  
 COMPLETION DATE: MARCH 25, 1978  
 ORIGINAL BEARING TREES:  
 6" Norway Pine; N 66° W, 8.7'

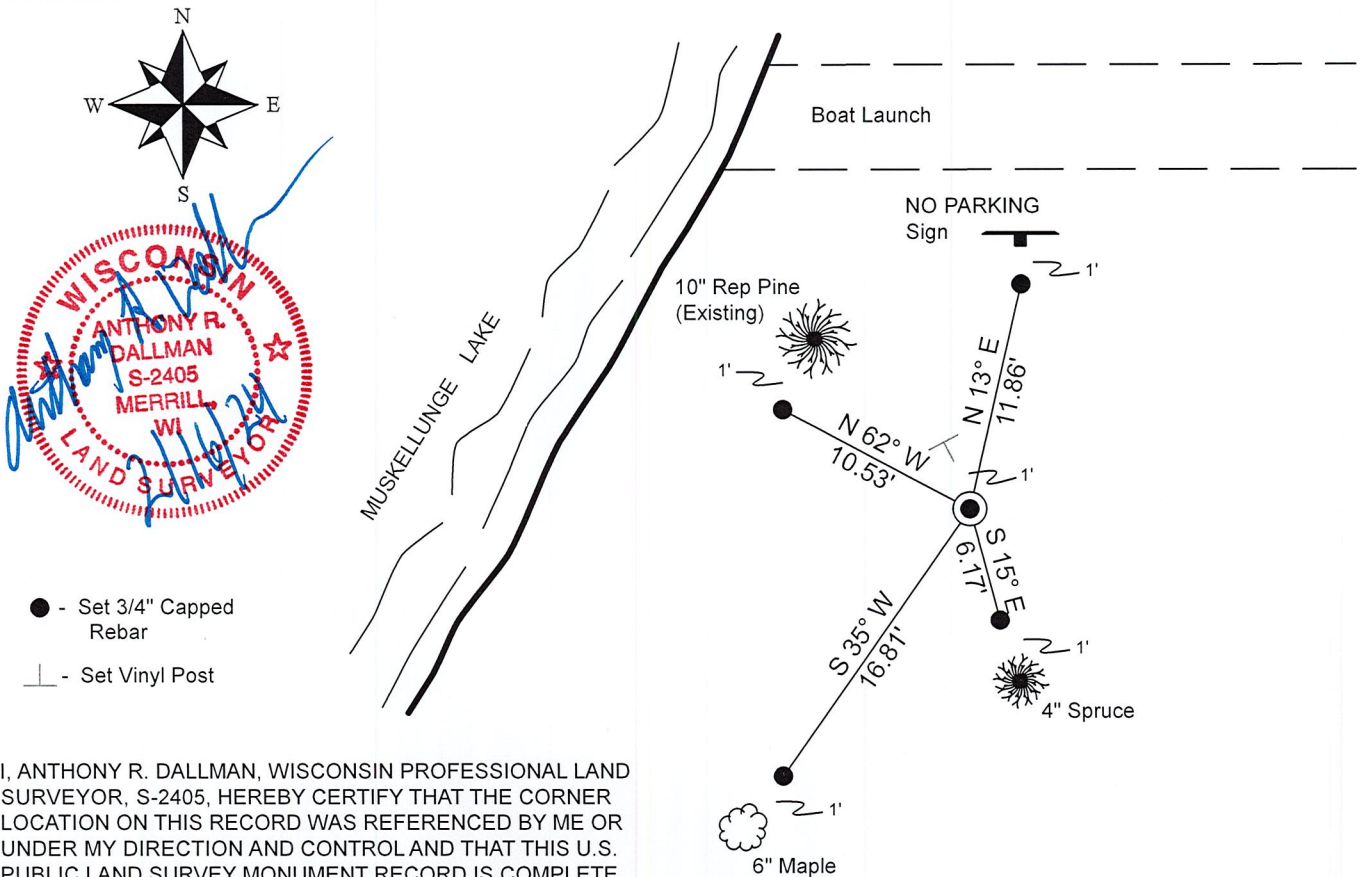


**(f)(g)(h) DESCRIPTION OF MONUMENT FOUND AT THIS CORNER AND IF IT WAS ACCEPTED. STATE ALL EVIDENCE (MATERIAL, TESTIMONIAL, OCCUPATIONAL, PLATS, RECORDS, OTHER MONUMENTS) USED AS A BASIS FOR ESTABLISHING LOCATION. IF RE-ESTABLISHING THROUGH LOST CORNER PROPORTIONATE METHODS, INDICATE ALL MONUMENTS, DISTANCES, AND DIRECTIONS USED TO ESTABLISH. INDICATE TYPE OF MONUMENTS FOUND OR SET.**

- 11/04/1992, Lester Schmit accepted 2" Iron Pipe for a property survey.
- 7/12/1993, David Osterbrink accepted 2" Iron Pipe for a property survey.
- 4/19/1995, James D. Rein accepted 2" Iron Pipe for a property survey.
- 02/10/2022, Todd Loftus accepted 2" Iron Pipe for a property survey.
- 7/20/2023, I, Anthony R. Dallman, PLS-2405, found a 2" Iron Pipe pulled out and stuck in uprooted tree roots. I used nearby survey monuments to re-establish the corner position to reset the 2" Iron Pipe, accepted this location and set witness monuments, as shown in the sketch below, to further perpetuate the corner location.

**(c)(d)(e) PLAN VIEW OF THE CORNER WITH TIES TO AT LEAST FOUR WITNESSES. IF IN DISAGREEMENT WITH PREVIOUSLY ESTABLISHED CORNER, SHOW THE DISTANCES BETWEEN THE TWO CORNERS AND ALSO THE TIES TO THE DISPUTED CORNER.**

- Tie bearings by hand-held compass.
- Tie distances by steel tape.
- Not to scale.



I, ANTHONY R. DALLMAN, WISCONSIN PROFESSIONAL LAND SURVEYOR, S-2405, HEREBY CERTIFY THAT THE CORNER LOCATION ON THIS RECORD WAS REFERENCED BY ME OR UNDER MY DIRECTION AND CONTROL AND THAT THIS U.S. PUBLIC LAND SURVEY MONUMENT RECORD IS COMPLETE TO THE BEST OF MY KNOWLEDGE AND BELIEF.

*Anthony R. Dallman* 02/16/24  
 ANTHONY R. DALLMAN, PLS S-2405

INDEX NO. G-23-24

43506122016\_Mon-N



43506122016\_North



43506122016\_West



43506122016\_South

EE  
YR  
IF THE LOCATION  
OF THIS MONITOR  
IS UNDESIRABLE  
PLEASE CONTACT  
ECONOMY  
MONITORING  
DIVISION



43506122016\_East



43506122016\_Found-E



43506122016\_Found-S

