

# U.S. PUBLIC LAND SURVEY MONUMENT RECORD

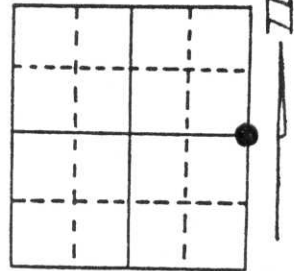
Note: This form is intended and designed to fulfill all requirements of Wisconsin Administrative Code, Chapter A-E 5.02, U.S. Public Land Survey Monument Record (3) (a) (b) (c) (d) (e) (f) (g) (h) (i). An additional sheet may be added if necessary to conform with said requirements.

(a) Corner location: Township 35 North

Range 6 East

Town/City/Village Bradley

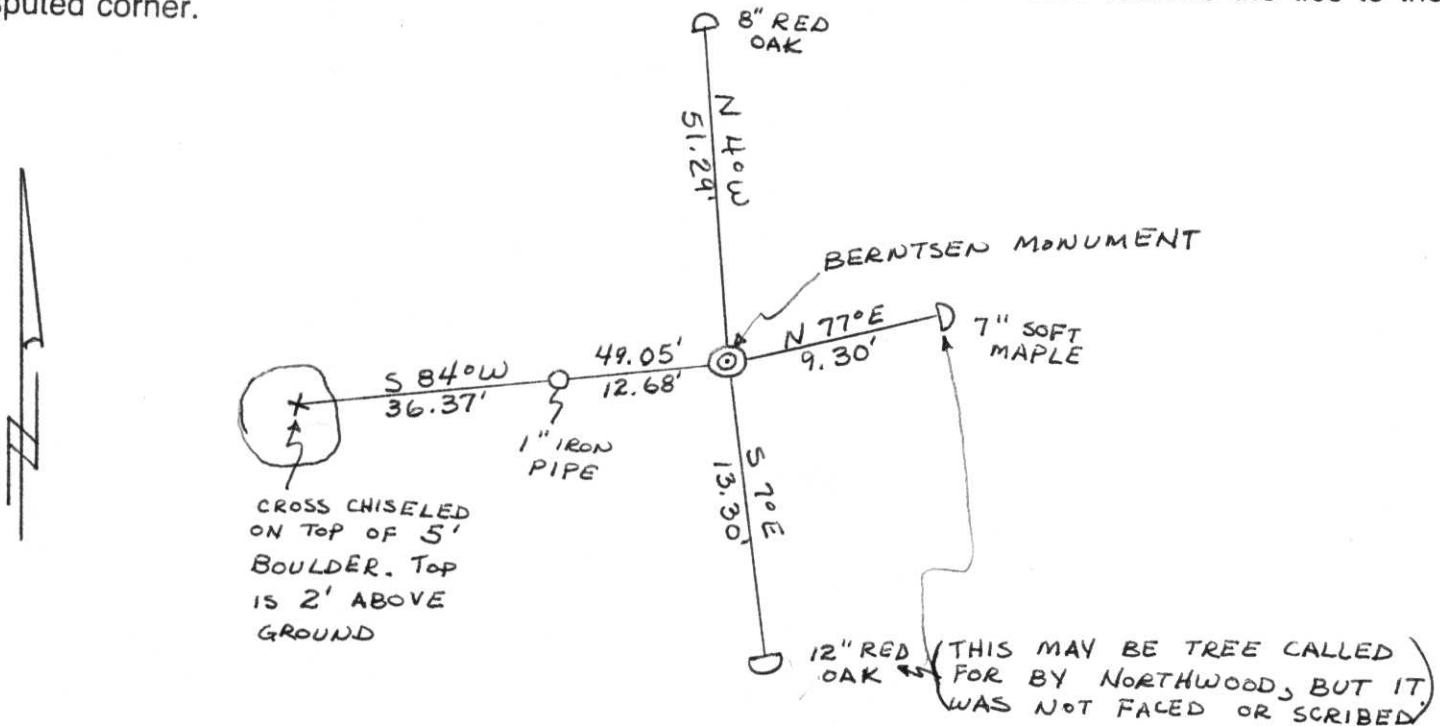
County Lincoln



Section 12

(b) (f) (g) (h) Description of monument found at this corner and if it was accepted, state all evidence (material, testimonial, occupational, plats, records, other monuments) used as a basis for accepting. If not accepted or if nothing was found, state evidence used as basis for establishing location. If reestablished through lost corner proportionate methods, indicate all monuments, distances and directions used to establish. Original Gov't. Survey: August 1860 by James Marsh, set wood post for corner with bearings, yellow pine 20 S 15° W 5 links and yellow pine 5 S 72° E 57 links. Northwoods Surveyors show this corner on a map dated February 1962, with the latest revision date of July 1968 as a wood post (a square notation on their map) with B.T.s: 6" oak South 13.1' and 6" maple N 74° E 8.6'. John H. Fisher used this location for the split of the section while platting Musky Bay Vista Subdivision in March 1978. I found a 1" iron pipe for the corner with a 5" square wood post and rotted wood red top 1" x 4" stake alongside. The B.T.s were <sup>not</sup> removed during a clear cut of the timber on the east side of the corner. I replaced the 1" iron pipe with a Berntsen monument for the corner and witnessed as shown below.

(c) (d) (e) Plan view of corner with ties to at least 4 witness monuments. If in disagreement with previously established corner, show the distances between the two corners and also indicate the ties to the disputed corner.



(i) I, Lester J. Schmit R.L.S. S-1192  
 (type or print name) certify that the corner location on this record was determined by me or under my direction and control and that this U.S. Public Land Survey Monument Record is correct and complete to the best of my knowledge and belief.

Lester J. Schmit Signature      7 Jun 94 Date



Index No. 6-25