

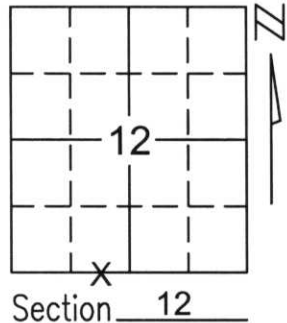
U.S. PUBLIC LAND SURVEY MONUMENT RECORD

Note: This form is intended and designed to fulfill all requirements of Wisconsin Administrative Code, Chapter A-E 5.02, U.S. Public Land Survey Monument Record (3)(a)(b)(c)(d)(e)(f)(g)(h)(i). An additional sheet may be added if necessary to conform with said requirements.

(a) Corner location: Township 35 North
Range 6 East

Town/City/Village BRADLEY

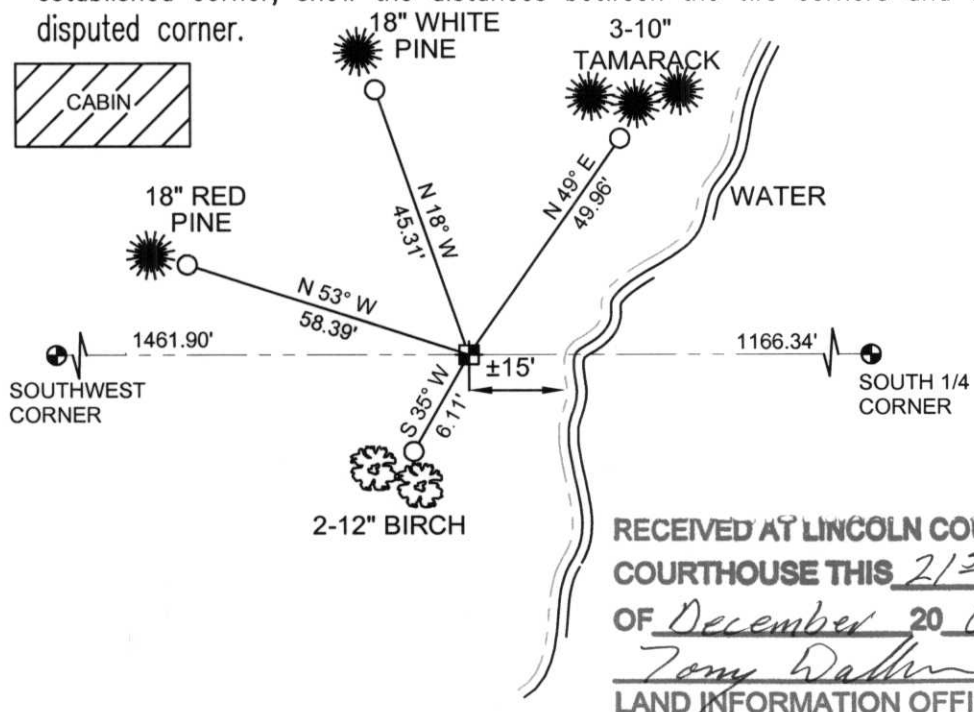
County LINCOLN



(b)(f)(g)(h) Description of monument found at this corner and if it was accepted, state all evidence (material, testimonial, occupational, plats, records, other monuments) used as a basis for accepting. If not accepted or if nothing was found, state evidence used as basis for establishing location. If reestablished through lost corner proportionate methods, indicate all monuments, distances and directions used to establish.

NUMEROUS SURVEYS WERE COMPLETED IN BOTH SECTION 12 AND SECTION 13. AN OLD PARCEL MAP DEPICTS MEANDER CORNERS ON EACH BANK OF THE LAKE. WE LOCATED MONUMENTS WITHIN THESE SURVEYS AND ATTEMPTED TO OBTAIN THE TRUE POSITION OF THE SOUTH 1/4 SECTION 12. WE FOUND THE BEST EVIDENCE OF THE SOUTH 1/4 THROUGH THE SURVEYS COMPLETED IN THE WEST 1/2 OF SECTION 13 AND THE SOUTHWEST 1/4 LINE OF SECTION 12. WE HELD THE EAST MEANDER CORNER AND PLACED AN ANGLE POINT IN THE SOUTH LINE OF THE SOUTHEAST 1/4 OF SECTION 12.

(c)(d)(e) Plan view of corner with ties to at least 4 witness monuments. If in disagreement with previously established corner, show the distances between the two corners and also indicate the ties to the disputed corner.

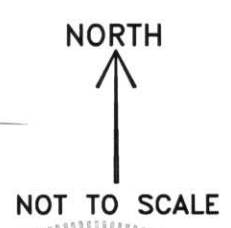


COORDINATES ARE REFERENCED TO THE LINCOLN COUNTY COORDINATE SYSTEM AS DEVELOPED BY THE WISCONSIN DEPARTMENT OF TRANSPORTATION AND WERE DETERMINED BY GPS OBSERVATIONS ON CONTROL POINTS AS SUPPLIED BY LINCOLN COUNTY.

BEARINGS ARE REFERENCED TO MAGNETIC NORTH.

- - SET 3/4" x 30" REBAR W/ ALUM CAP 1' FROM BEARING TREE
- ⊕ - WEST MEANDER CORNER OF THE SOUTH 1/4 CORNER FOUND 1" IRON PIPE

RECEIVED AT LINCOLN COUNTY COURTHOUSE THIS 21ST DAY OF December 20 01
Tom Radenz
LAND INFORMATION OFFICE



(i) I, Thomas A. Radenz, RLS certify that the corner location on this record was determined by me or under my direction and control and that this U.S. Public Land Survey Monument Record is correct and complete to the best of my knowledge and belief.

Thomas A. Radenz Signature
12/21/01 Date



Index No. I-22,23