

U.S. PUBLIC LAND SURVEY MONUMENT RECORD

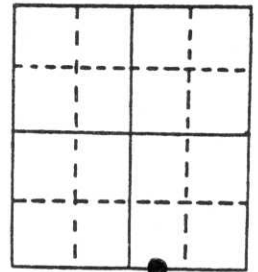
Note: This form is intended and designed to fulfill all requirements of Wisconsin Administrative Code, Chapter A-E 5.02, U.S. Public Land Survey Monument Record (3) (a) (b) (c) (d) (e) (f) (g) (h) (i). An additional sheet may be added if necessary to conform with said requirements.

(a) Corner location: Township 35 North

Range 6 East

Town/City/Village Bradley

County Lincoln



Section 12

(b) (f) (g) (h) Description of monument found at this corner and if it was accepted, state all evidence (material, testimonial, occupational, plats, records, other monuments) used as a basis for accepting. If not accepted or if nothing was found, state evidence used as basis for establishing location. If reestablished through lost corner proportionate methods, indicate all monuments, distances and directions used to establish. I found the iron pipe and witnesses per Jeffrey W. Austin's May 9, 1989 U.S. Public Land Survey Monument Record. I replaced the iron pipe with a Berntsen monument.

(c) (d) (e) Plan view of corner with ties to at least 4 witness monuments. If in disagreement with previously established corner, show the distances between the two corners and also indicate the ties to the disputed corner.

(i) I, Lester J. Schmit R.L.S. S-1192

(type or print name) certify that the corner location on this record was determined by me or under my direction and control and that this U.S. Public Land Survey Monument Record is correct and complete to the best of my knowledge and belief.

Lester J. Schmit Signature 7 Jun 94 Date



Index No. I-23,24

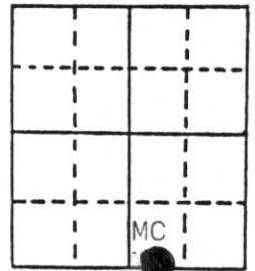
U.S. PUBLIC LAND SURVEY MONUMENT RECORD

Note: This form is intended and designed to fulfill all requirements of Wisconsin Administrative Code, Chapter A-E 5.02, U.S. Public Land Survey Monument Record (3) (a) (b) (c) (d) (e) (f) (g) (h) (i). An additional sheet may be added if necessary to conform with said requirements.

(a) Corner location: Township 35 North
 Range 6 East/West

Town/City/Village BRADLEY

County LINCOLN



Section 12

(b) (f) (g) (h) Description of monument found at this corner and if it was accepted, state all evidence (material, testimonial, occupational, plats, records, other monuments) used as a basis for accepting. If not accepted or if nothing was found, state evidence used as basis for establishing location. If reestablished through lost corner proportionate methods, indicate all monuments, distances and directions used to establish.

The original government survey was performed by Alfred Millard in October, 1860. A wood post was set: W. Pine 12" N55E, 23 lks., W. Pine 8" S80E, 59 lks.

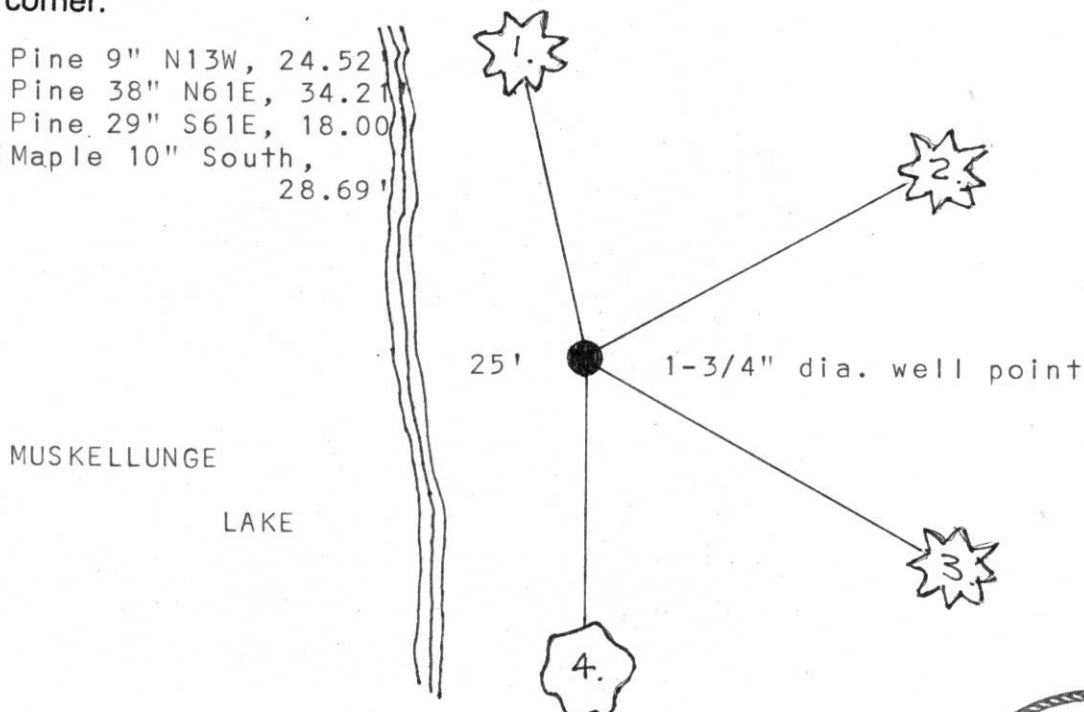
Northwoods Surveyors shows this corner on a map dated September, 1974 as iron pipe: W. Pine 30" S60E, 16.6', W. Pine 32" N60E, 32.8'.

I found a 1-3/4" dia. well point marking this corner witnessed by:
 W. Pine 38" N61E, 34.21 feet, W. Pine 29" S61E, 18.00 feet.

I placed 60 penny nails in the old BTs and established new BTs as shown below.

(c) (d) (e) Plan view of corner with ties to at least 4 witness monuments. If in disagreement with previously established corner, show the distances between the two corners and also indicate the ties to the disputed corner.

1. W. Pine 9" N13W, 24.52
2. W. Pine 38" N61E, 34.21
3. W. Pine 29" S61E, 18.00
4. TriMaple 10" South, 28.69'



(i) I, JEFFREY W. AUSTIN S-1885
 (type or print name) certify that the corner location on this record was determined by me or under my direction and control and that this U.S. Public Land Survey Monument Record is correct and complete to the best of my knowledge and belief.



Signature

Date

MAY 9, 1989

Index No. I-23,24