

U.S. PUBLIC LAND SURVEY MONUMENT RECORD

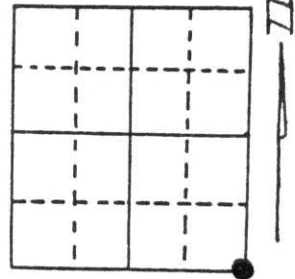
Note: This form is intended and designed to fulfill all requirements of Wisconsin Administrative Code, Chapter A-E 5.02, U.S. Public Land Survey Monument Record (3) (a) (b) (c) (d) (e) (f) (g) (h) (i). An additional sheet may be added if necessary to conform with said requirements.

(a) Corner location: Township 35 North

Range 6 East

Town/City/Village Bradley

County Lincoln



Section 12

(b) (f) (g) (h) Description of monument found at this corner and if it was accepted, state all evidence (material, testimonial, occupational, plats, records, other monuments) used as a basis for accepting. If not accepted or if nothing was found, state evidence used as basis for establishing location. If reestablished through lost corner proportionate methods, indicate all monuments, distances and directions used to establish. I found the 2" iron pipe and witnesses per Jeffrey W. Austin's May 9, 1989 U.S. Public Land Survey Monument Record. I replaced the iron pipe with a Berntsen monument.

(c) (d) (e) Plan view of corner with ties to at least 4 witness monuments. If in disagreement with previously established corner, show the distances between the two corners and also indicate the ties to the disputed corner.

(i) I, Lester J. Schmit R.L.S. S-1192

(type or print name) certify that the corner location on this record was determined by me or under my direction and control and that this U.S. Public Land Survey Monument Record is correct and complete to the best of my knowledge and belief.

Lester J. Schmit Signature 7 Jun 94 Date



Index No. I-25

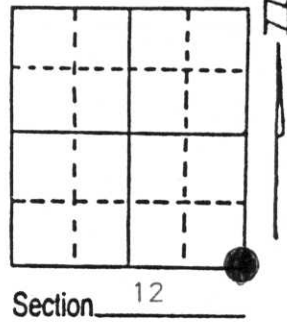
and designed to fulfill all requirements of Wisconsin Administrative Code, Chapter A-E 7.08 U.S. Survey Monument Record (3) (a) (b) (c) (d) (e) (f) (g) (h) (i). An additional sheet may be added if necessary to conform with said requirements.

(a) Corner location: Township 35 North

Range 6 East/West

Town/City/Village BRADLEY

County LINCOLN



(b) (f) (g) (h) Description of monument found at this corner and if it was accepted, state all evidence (material, testimonial, occupational, plats, records, other monuments) used as a basis for accepting. If not accepted or if nothing was found, state evidence used as basis for establishing location. If reestablished through lost corner proportionate methods, indicate all monuments, distances and directions used to establish. Indicate type of monument found or set and sign post.

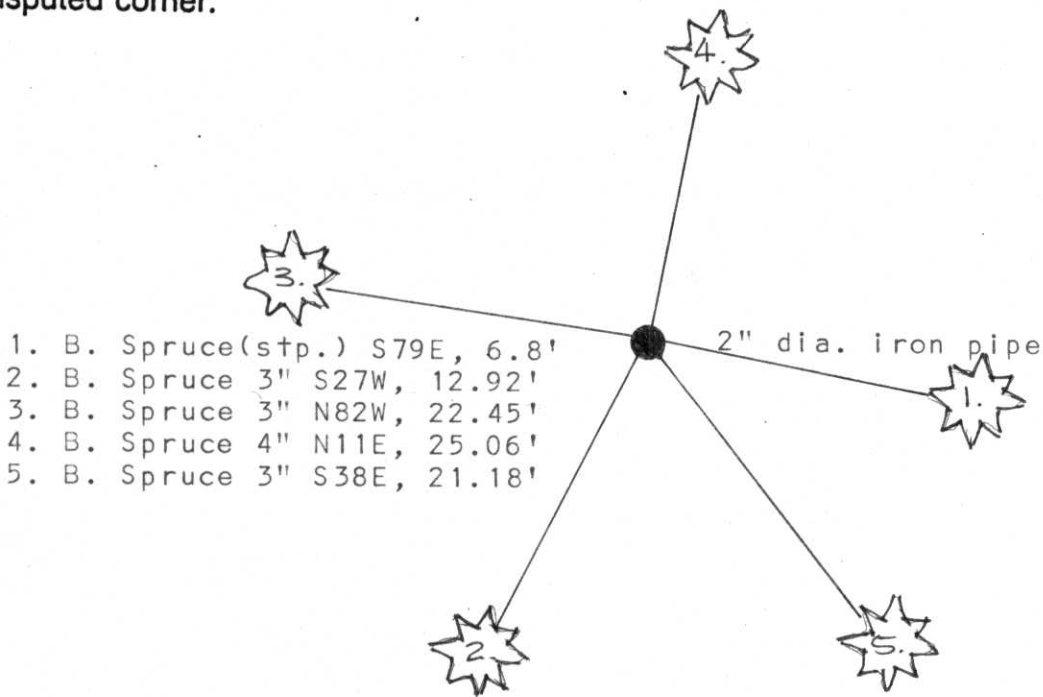
The original government survey was performed by Alfred Millard in August, 1860. A wood post was set: Y. Pine 9" S38E, 460 lks. no other trees near. (open swamp).

Northwoods Surveyors shows this corner on a map dated September, 1974 as iron pipe: Spruce 4" S74E, 6.8', Spruce 3" S28W, 12.6'.

I found a 2" dia. iron pipe marking this corner witnessed by:
B. Spruce(stp.) 4" S79E, 6.8', B. Spruce 3" S27W, 12.92'.

I placed 60 penny nail in the live BT and established new BTs as shown below.

(c) (d) (e) Plan view of corner with ties to at least 4 witness monuments. If in disagreement with previously established corner, show the distances between the two corners and also indicate the ties to the disputed corner.



1. B. Spruce(stp.) S79E, 6.8'
2. B. Spruce 3" S27W, 12.92'
3. B. Spruce 3" N82W, 22.45'
4. B. Spruce 4" N11E, 25.06'
5. B. Spruce 3" S38E, 21.18'

(i) I, JEFFREY W. AUSTIN S-1885
(type or print name) certify that the corner location on this record was determined by me or under my direction and control and that this U.S. Public Land Survey Monument Record is correct and complete to the best of my knowledge and belief.

Signature [Handwritten Signature] Date MAY 9, 1989



Index No. I-25

99.

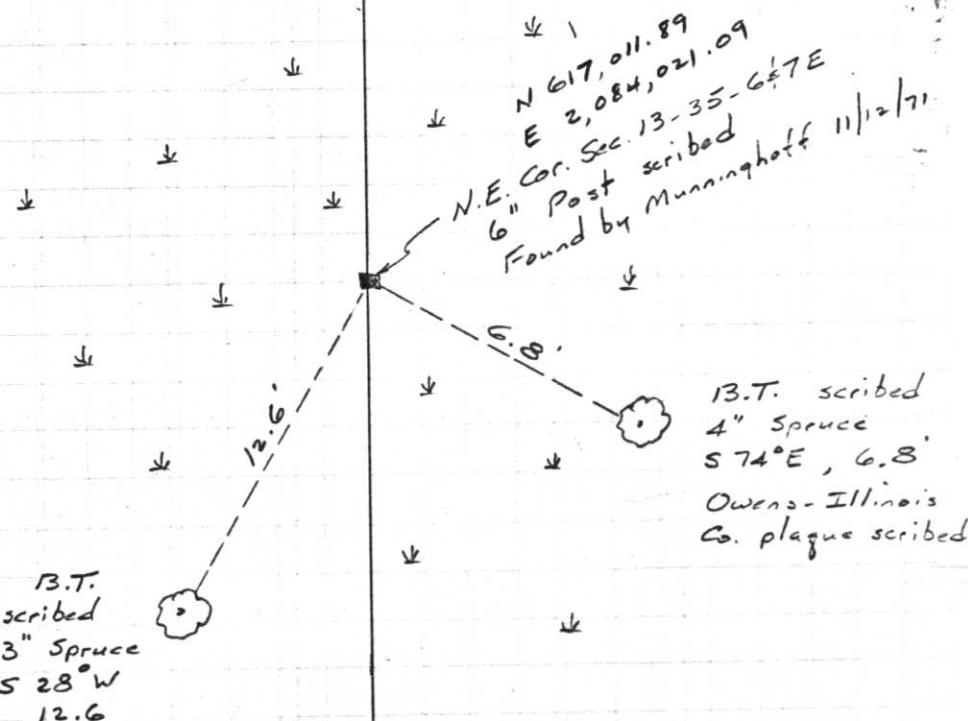
Project I.D. 1173-3-00 C.T.H. "S"
U.S.H.8 U.S.H. 51 Freeway Lincoln
Co. Wm. Scherer Surveyor Received
from Division of Hwy's Jan. 11, 1973

T35N

R 6 1/2 E

I-25

Nov. 12, 1971



Note: Corner found by using survey plat
furnished by NORTHWOODS SURVEYORS.