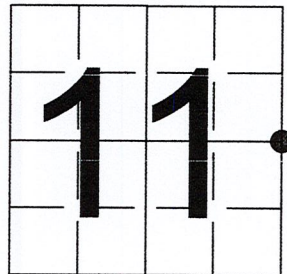


# U S PUBLIC LAND SURVEY MONUMENT RECORD

NOTE: This form is intended and designed to fulfill all requirements of Wisconsin Administrative Code, Chapter A-E 7.08 U.S. Public Land Survey Monument Record (3) (a-i)

A-E 7.08(3)(a) Identity of corner:  
 EAST 1/4 CORNER SECTION 11,  
 TOWNSHIP 35 NORTH,  
 RANGE 06 EAST OF THE 4TH PM,  
 TOWN OF BRADLEY,  
 COUNTY OF LINCOLN

WISCORS - LINCOLN COUNTY  
 N: 250,930.021 USft (250,930.016)  
 E: 391,388.527 USft (391,388.424)  
 Datum: NAD83 (2011)  
 GNSS Method RTN - Direct  
 GNSS Control WISCORS VRS



The coordinate value shown has been verified by the average of two or more GPS observations at a markedly different time. Coordinates shown in parenthesis are provided by Lincoln County.

A-E 7.08(3)(b)

Original Surveyor: Alfred Millard

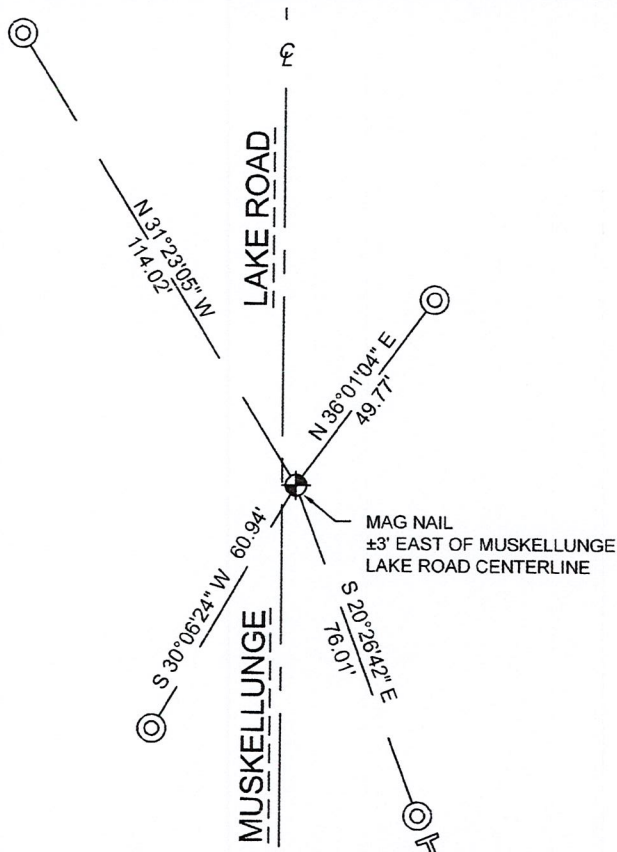
Date of Original Survey	Commenced:	October 18, 1860	Original Accessories:		
	Completed:	July 21, 1861	W. Pine	26	N 46° W
			W. Pine	18	N 1° E
					200 Links
					9 Links

Unknown date - unknown surveyor - indicates this position as "1/4 post" on Lincoln County map L170A.

December 14, 2009 - Surveyor 1192 - Lester J. Schmidt - indicate this position as "Mag nail set this survey" on Lincoln County map M593A.

September 15, 2022 - While performing the 2022 Lincoln County PLSS Corner Remonumentation and GPS Services project, I found a standard size Mag nail near the computed position provided by Lincoln County. The monument is ±3 feet east of the Muskellunge Lake Road centerline. I established 4 new reference monuments as shown below.

A-E 7.08(3)(c)(d) Plan view of corner with references to at least 4 witness monuments.



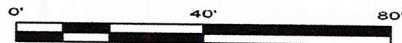
BEARINGS LISTED TO THE NEAREST SECOND ARE REFERENCED TO WISCONSIN COUNTY COORDINATE REFERENCE SYSTEM - LINCOLN COUNTY ZONE. ALL OTHER BEARINGS ARE MAGNETIC



RECEIVED BY LINCOLN COUNTY  
 SURVEYOR THIS 27<sup>TH</sup> DAY  
 OF December 20 22  
*Jeffrey DeMuth*  
 COUNTY SURVEYOR

## LEGEND

- Standard size Mag nail, found
- 7/8" diameter X 30" long - iron rod with 2" diameter aluminum cap, set
- Vinyl T-post, set ±1 foot SE of witness



A-E 7.08(3)(e) 1860 Surveyor set a post, 2009 Surveyor set a Mag nail. I found a Mag nail.

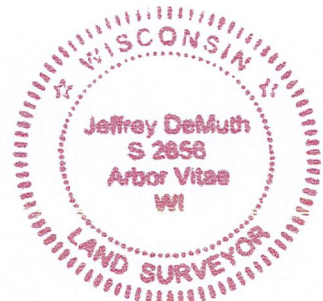
A-E 7.08(3)(f) I accept this monument as a FOUND PERPETUATED LOCATION of the corner.

A-E 7.08(3)(g)(h) This corner was not determined through lost-corner-proportionate methods.

A-E 7.08(3)(i) I, Jeffrey L. DeMuth, Professional Land Surveyor No. S-2656, hereby certify that the corner location on this record was determined by the Lincoln County Surveyor, and the monuments found or set as shown hereon were measured by me or under my direction and control, and that this U.S. Public Land Survey Monument Record is correct and complete to the best of my knowledge, and belief.

*Jeffrey L. DeMuth*  
 \_\_\_\_\_  
 SIGNATURE

December 14, 2022  
 \_\_\_\_\_  
 DATE



69-21

## REPORT

### 2022-Lincoln County PLSS Corner Remonumentation and GPS Services

Wisconsin Corner Point Identification Number: 43506112000

Surveyor: Jeffrey L. DeMuth – S2656

Corner monument: Found standard size Mag nail.

Field Book: Cardinal North – Lincoln Co. Remon. – 2022-00

Page: 42

Horizontal Datum: WisCRS – Lincoln County Zone – NAD83(2011)

Date / time of initial measurement:

September 15, 2022 - Start 09:22:42 CDT – End 09:37:11 CDT

Reference monuments:

4 – Set - 7/8" diameter X 30" long iron rods with 2" diameter Lincoln Co. aluminum cap.

#### Coordinate Table

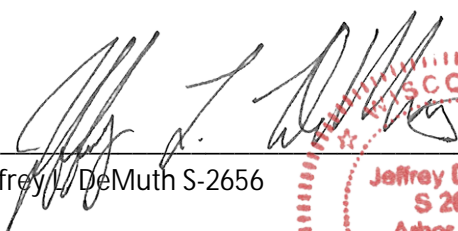
	County Provided	2022 Measurement	Difference
North	250930.016	250930.021	0.00
East	391388.424	391388.527	-0.10

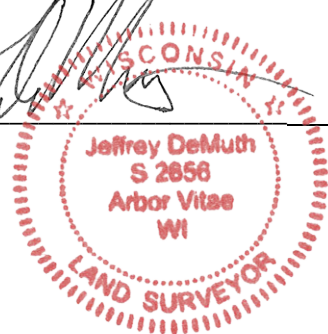
Observed coordinates match with existing coordinates within reason.

Request Data Log for more information.

Additional Notes:

Corner falls  $\pm 3$  feet east of Muskellunge Lake Road centerline.

  
Jeffrey L. DeMuth S-2656



October 7, 2022

Date



43506112000\_Mon-N





43506112000\_North





43506112000\_West





43506112000\_South





43506112000\_East

