

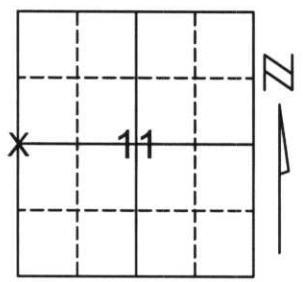
U.S. PUBLIC LAND SURVEY MONUMENT RECORD

Note: This form is intended and designed to fulfill all requirements of Wisconsin Administrative Code, Chapter A-E 5.02, U.S. Public Land Survey Monument Record (3)(a)(b)(c)(d)(e)(f)(g)(h)(i). An additional sheet may be added if necessary to conform with said requirements.

(a) Corner location: Township 35 North
Range 6 East

Town/City/Village BRADLEY

County LINCOLN



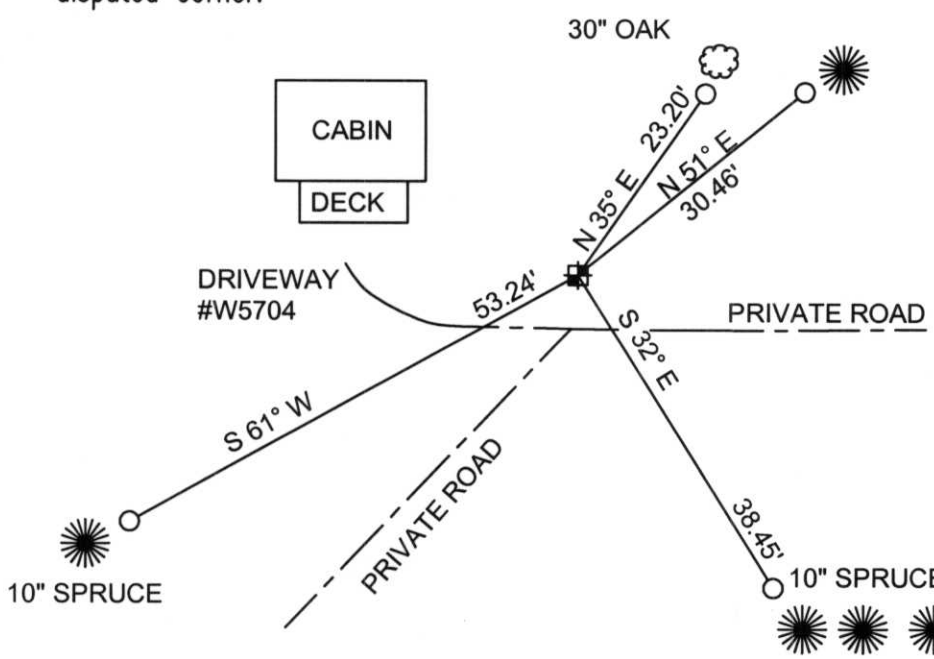
Section 11

(b)(f)(g)(h) Description of monument found at this corner and if it was accepted, state all evidence (material, testimonial, occupational, plats, records, other monuments) used as a basis for accepting. If not accepted or if nothing was found, state evidence used as basis for establishing location. If reestablished through lost corner proportionate methods, indicate all monuments, distances and directions used to establish.

WE FOUND A 4X4 CONCRETE POST, SCRIBED 1/4 SECTION 10 & 11, WITH BRASS CAP. THIS IS THE SAME MONUMENT WAS CALLED OUT IN LESTER SCHMIDT'S PLAT OF SURVEY AND THE WISCONSIN DEPARTMENT OF TRANSPORTATION RIGHT-OF-WAY PLAT OF S.T.H. "8". TIED OUT MONUMENT TO PERPETUATE CORNER LOCATION.

RECEIVED AT LINCOLN COUNTY
COURTHOUSE THIS 21ST DAY
OF December 20 01
Tony Dallen
LAND INFORMATION OFFICE

(c)(d)(e) Plan view of corner with ties to at least 4 witness monuments. If in disagreement with previously established corner, show the distances between the two corners and also indicate the ties to the disputed corner.



COORDINATES ARE REFERENCED TO THE LINCOLN COUNTY COORDINATE SYSTEM AS DEVELOPED BY THE WISCONSIN DEPARTMENT OF TRANSPORTATION AND WERE DETERMINED BY GPS OBSERVATIONS ON CONTROL POINTS AS SUPPLIED BY LINCOLN COUNTY.

BEARINGS ARE REFERENCED TO MAGNETIC NORTH.

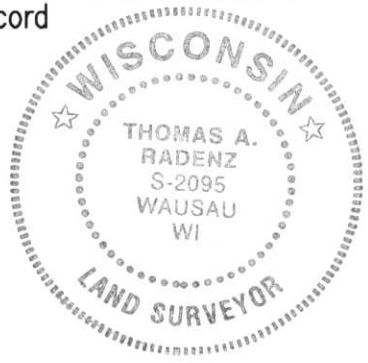
- - SET 3/4" x 30" REBAR W/ ALUM CAP 1' FROM BEARING TREE
- - WEST 1/4 FOUND 4x4 CONCRETE MONUMENT WITH BRASS CAP



NOT TO SCALE

(i) I, Thomas A. Radenz, RLS certify that the corner location on this record was determined by me or under my direction and control and that this U.S. Public Land Survey Monument Record is correct and complete to the best of my knowledge and belief.

Thomas A. Radenz
Signature _____ Date 12/18/01



Index No. G-17