

U.S. PUBLIC LAND SURVEY MONUMENT RECORD

Note: This form is intended and designed to fulfill all requirements of the Wisconsin Administrative Code, Chapter A-E 7.08 U.S. Public Land Monument Record (3)(a)(b)(c)(d)(e)(f)(g)(h)(i). An additional sheet may be added if necessary to conform with said requirements.

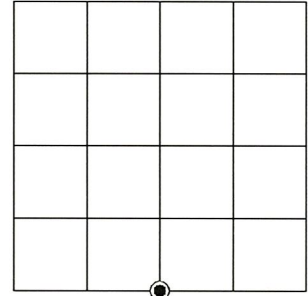
(a) CORNER LOCATION:

South Quarter Corner of Section 10
 Township 35 North
 Range 6 East
 Town of Bradley
 County of Lincoln

North:
 East:
 Datum:
 GNSS Method:
 GNSS Control:

(RECORDING AREA)

SECTION 10



(b) HISTORY OF ORIGINAL CORNER ESTABLISHMENT

Original Surveyor:
 Date of Survey: Commenced
 Completed
 Original B.T.'S

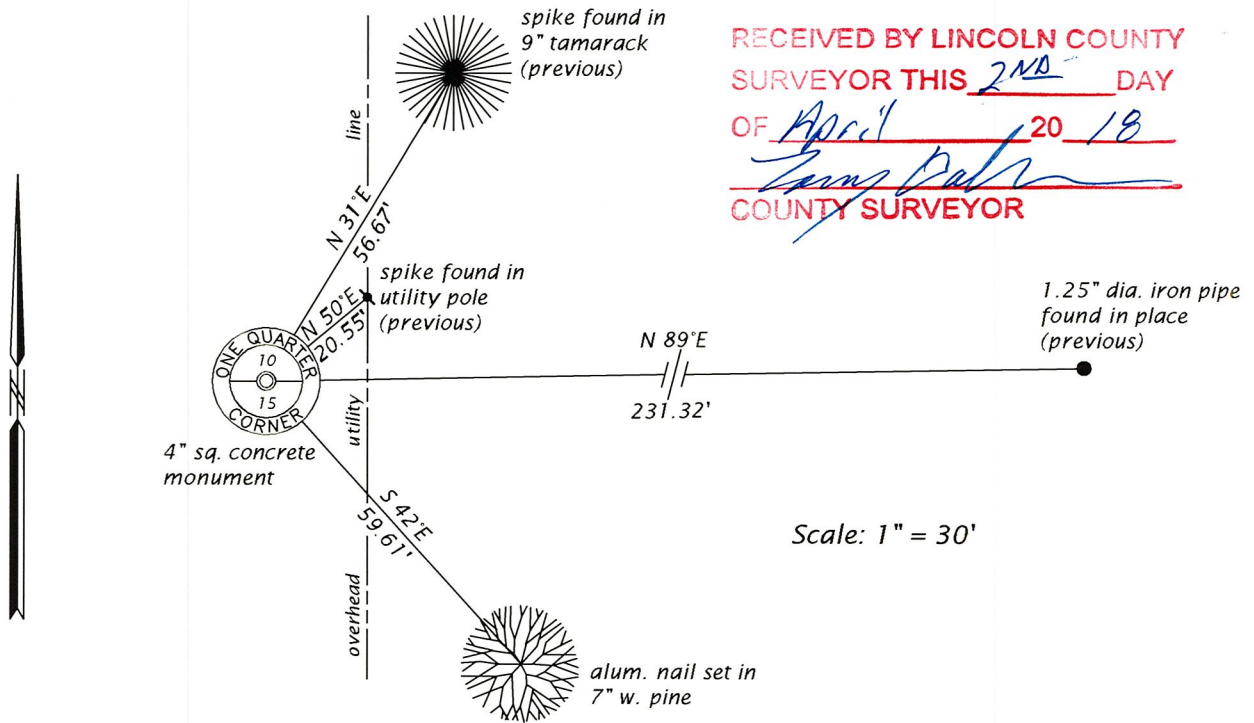
SEE PREVIOUS U.S.P.L.S. MONUMENT RECORD DATED FEBRUARY 7, 1990.

(f)(g)(h) DESCRIPTION OF MONUMENT FOUND AT THIS CORNER AND IF IT WAS ACCEPTED, STATE ALL EVIDENCE (MATERIAL, TESTIMONIAL, OCCUPATIONAL, PLATS, RECORD, OTHER MONUMENTS) USED AS A BASIS FOR ESTABLISHING LOCATION. IF NOT ACCEPTED OR IF NOTHING WAS FOUND, STATE EVIDENCE USED AS BASIS FOR ESTABLISHING LOCATION. IF REESTABLISHED THROUGH LOST CORNER PROPORTIONATE METHODS, INDICATE ALL MONUMENTS, DISTANCES AND DIRECTIONS USED TO ESTABLISH. INDICATE TYPE OF MONUMENT AND SIGN POST FOUND OR SET.

This is a perpetuation of a previous U.S.P.L.S. Monument Record by Jeffrey W. Austin, RLS, dated February 7, 1990, and filed in the office of the Lincoln County Register of Deeds. A complete history of the corner can be found on the previous monument record. I accept the previous location as a true and faithful perpetuation or reestablishment of the original corner location and further perpetuate it as follows.

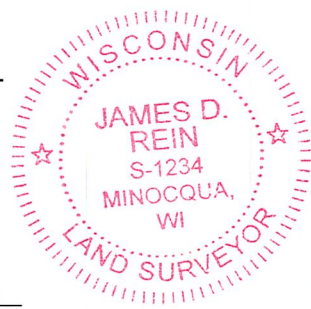
February 2, 2018, I, James D. Rein, PLS No. S-1234, found and accepted the 4" sq. concrete monument shown on the previous monument record by Austin. We made an additional bearing tree - see updated witnesses below.

(c)(d)(e) PLAN VIEW OF CORNER WITH TIES TO AT LEAST 4 WITNESS MONUMENTS. IF IN DISAGREEMENT WITH PREVIOUSLY ESTABLISHED CORNER, SHOW THE DISTANCE BETWEEN THE TWO CORNERS AND ALSO INDICATE THE TIES TO THE DISPUTED CORNER.



RECEIVED BY LINCOLN COUNTY SURVEYOR THIS 2ND DAY OF April 20 18
James D. Rein
 COUNTY SURVEYOR

(i) I, JAMES D. REIN, PROFESSIONAL LAND SURVEYOR NO. S-1234 HEREBY CERTIFY THAT THE CORNER LOCATION ON THIS RECORD WAS DETERMINED BY ME OR UNDER MY DIRECTION AND CONTROL AND THAT THIS U.S. PUBLIC LAND SURVEY MONUMENT RECORD IS CORRECT AND COMPLETE TO THE BEST OF MY KNOWLEDGE AND BELIEF.



James D. Rein
 SIGNATURE
 DATE MARCH 27, 2018

INDEX NO. 1-15

U. S. PUBLIC LAND SURVEY MONUMENT RECORD

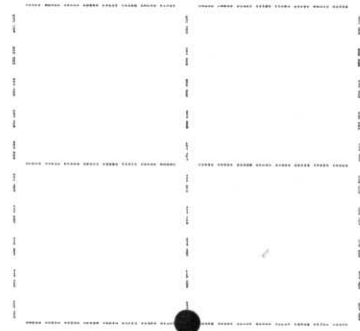
Note: This form is intended and designed to fulfill all requirements of Wisconsin Administrative Code, Chapter A-E 7.08 U.S. Public Land Survey Monument Record (3)(a)(b)(c)(d)(e)(f)(g)(h)(i). An additional sheet may be added if necessary to conform with said requirements.

(a) Corner location: Township 35 North

Range 6 East

Town of Bradley

Lincoln County, Wisconsin



Section 10

(b)(f)(g)(h) Description of monument found at this corner and if it was accepted, state all evidence (material, testimonial, occupational, plats, records, other monuments) used as a basis for accepting. If not accepted or if nothing was found, state evidence used as basis for establishing location. If reestablished through lost corner proportionate methods, indicate all monuments, distances and directions used to establish. Indicate type of monument found or set and sign post.

July, 1861: Alfred Millard sets a wood post: Spruce 4" N80°E, 76 lks., Tamarack 8" S40°E, 36 lks.

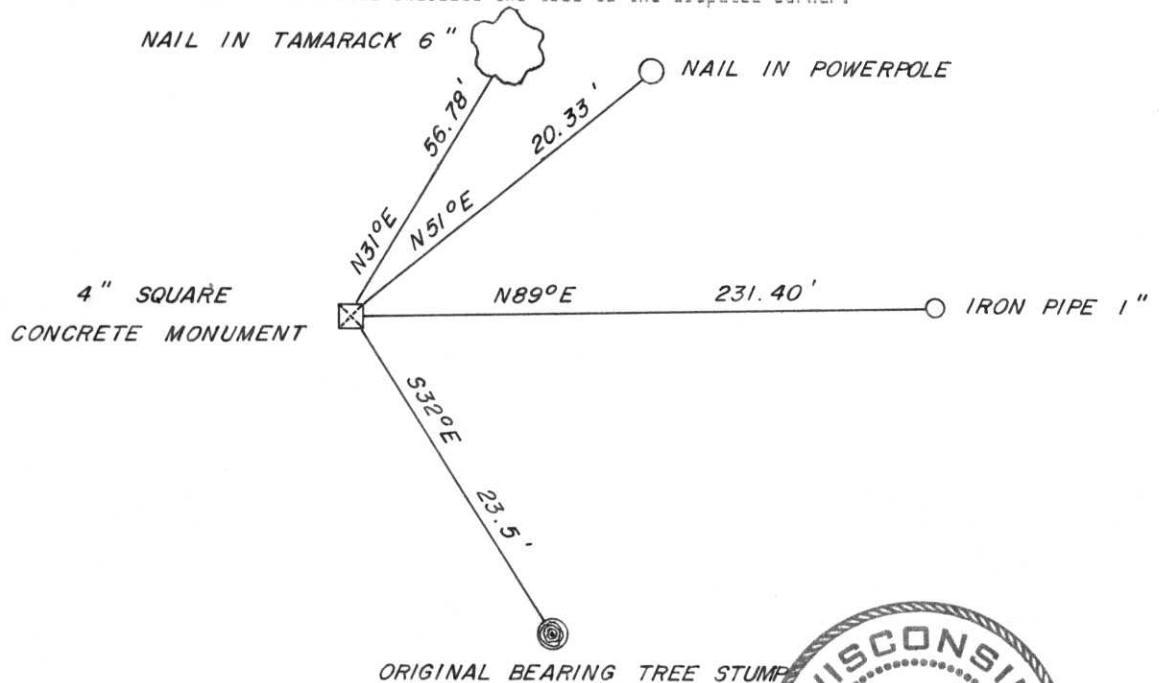
October, 1962: Northwoods Surveyors accepts corner witnessed by original Tamarack stump S32°E, 23.5'.

September 16, 1981: John H. Fisher and Associates certified survey map shows corner as 5" square concrete monument: original Tamarack stump S32°E, 23.5', powerpole N53°E, 20.1'.

September 15, 1986: Timberland Surveyors map shows corner as 4" square concrete monument.

February 2, 1990: I found and accepted 4" square concrete monument witnessed by the following: original bearing tree stump S32°E, 23.5', found nail in powerpole N51°E, 20.33', found nail in Tamarack 6" N31°E, 56.78', found iron pipe 1" N89°E, 231.40'.

(c)(d)(e) Plan view of corner with ties to at least four witness monuments. If in disagreement with previously established corner, show the distances between the two corners and also indicate the ties to the disputed corner.



I, Jeffrey W. Austin, Registered Land Surveyor S-1885 certify that the corner location on this record was determined by me or under my direction and control and that this U.S. Public Land Survey Monument Record is correct and complete to the best of my knowledge and belief.



Jeffrey W. Austin
Signature

FEBRUARY 7, 1990
Date

INDEX NO. I-15