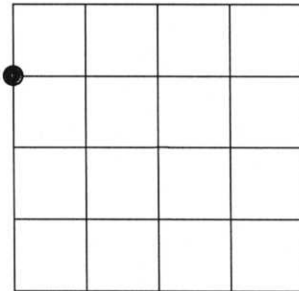


U.S. PUBLIC LAND SURVEY MONUMENT RECORD

Note: This form intended and designed to fulfill all requirements of Wisconsin Administrative Code, Chapter A-E 5.02, U.S. Public Land Survey Monument Record (3)(a)(b)(c)(d)(e)(f)(g)(h)(i). An additional sheet may be added if necessary to conform with said requirements.

(a) Corner Location: Township 35 North
 Range 6 East
 Town / City / Village TN. BRADLEY
 County LINCOLN

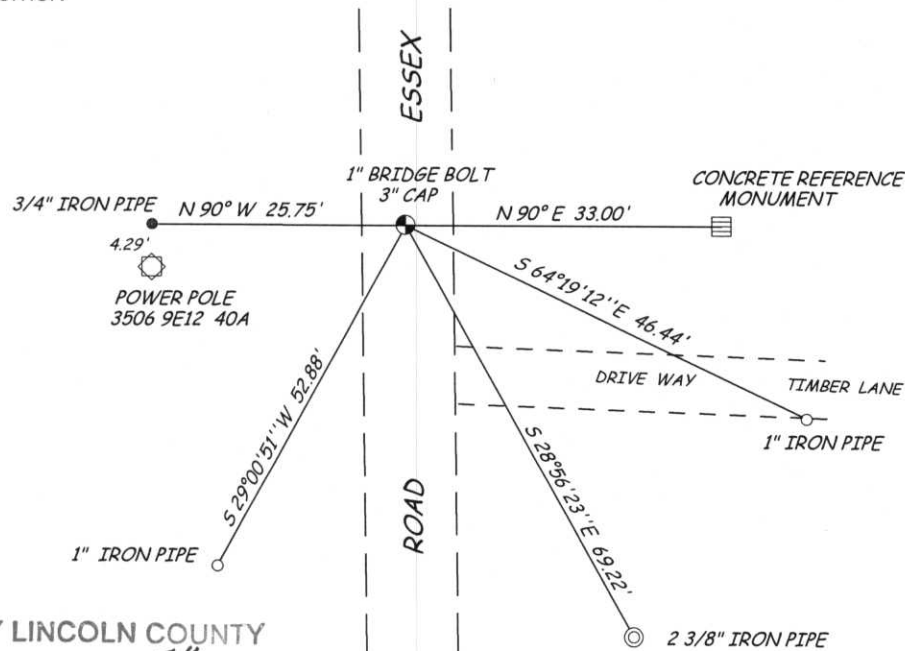


Section 10

(b)(f)(g)(h) Description of monument found at this corner and if it was accepted, state all evidence (material, testimonial, occupational, plats, records, other monuments) used as a basis for accepting. If not accepted of if nothing was found, state evidence used as basis for establishing location. If reestablishing through lost corner proportionate methods, indicate all monuments, distances and directions used to establish.

FOUND A 3" CAPPED BRIDGE BOLT IN TRAVELED PORTION OF ESSEX ROAD 33' WEST OF A BRASS CAPPED CONCRETE WITNESS POST. CORNER POSITION REFERENCED ON TIE SHEET BY BILL KELLY (F - 13/14) THIS CORNER WAS DESTROYED BY RESURFACE PROJECT OF ESSEX ROAD

(c)(d)(e) Plan view of corner with ties to at least 4 witness monuments. If in disagreement with previously established corner, show the distances between the two corners and also indicate the ties to the disputed corner.



RECEIVED BY LINCOLN COUNTY
 SURVEYOR THIS 20TH DAY
 OF January 20 08
[Signature]
 COUNTY SURVEYOR

(i) I, David L. Lemke, RLS - 1845, hereby certify that the corner location shown hereon was determined by me under my direction and control and that this U.S. Public Land Survey Monument Record is correct and complete to the best of my knowledge and belief.

[Signature]

JAN 16 2008



Index No. F-13