

CERTIFIED LAND CORNER RESTORATION

Index No. G-13

State of Wisconsin }
County of LINCOLN } ss.

History of original corner establishment:



William F. Kelly
28 June 1974

I William F. Kelly, do hereby certify that on the 14th day of JUNE, 1974, I found evidence of the WEST 1/4 corner of SECT 10 Township 35, North, Range 6, Fourth, Principal Meridian, as described hereon; and that from this evidence I established a new monument and accessories as described hereon to perpetuate the original location of this corner.

Description of corner evidence found:

Located well point Pipe driven thru road pavement from scribed Blaze Tree East of corner and a second Blaze Tree N.E. of corner location.

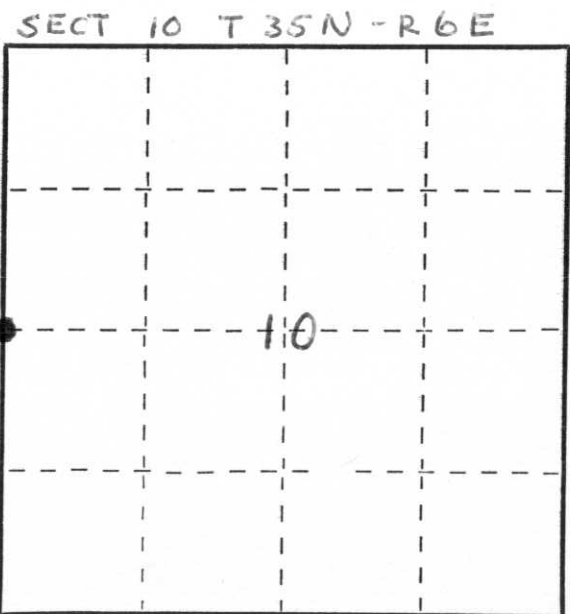
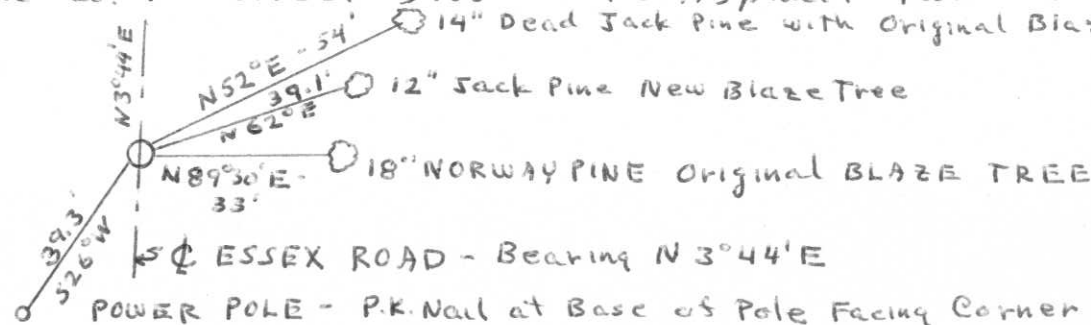
Resident witnesses:

Tom Davis

New Monument Marked \rightarrow $\frac{1}{4}$ SECT. COR.
9 | 10
T35N R6E
WFK

Description of monument and accessories I established to perpetuate the original location of this corner.

Set Lincoln Co. Monument flush with Asphalt Road Surface
14" Dead Jack Pine with Original Blaze



● = Corner monument restored.

Dated at _____, Wis., this 28th day of JUNE, 1974.

Signature William F. Kelly Title Registered Land Surveyor Registration No. 51098
(County Surveyor, Registered Land Surveyor, or other duly authorized official)

Office of Register of Deeds, County of _____, I hereby certify that the within instrument was filed in this office for record on the _____ day of _____, 19____ at _____ o'clock _____ M.

(Register of Deeds)

By _____ Deputy