

U.S. PUBLIC LAND SURVEY MONUMENT RECORD

Note: This form is intended and designed to fulfill all requirements of the Wisconsin Administrative Code, Chapter A-E 7.08 U.S. Public Land Monument Record (3)(a)(b)(c)(d)(e)(f)(g)(h)(i). An additional sheet may be added if necessary to conform with said requirements.

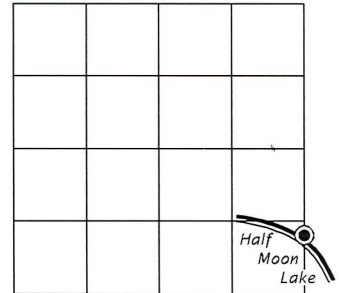
(a) CORNER LOCATION:

Witness Meander Corner of Section 9
 Township 35 North
 Range 6 East
 Town of Bradley
 County of Lincoln

North:
 East:
 Datum:
 GNSS Method:
 GNSS Control:

(RECORDING AREA)

SECTION 9



(b) HISTORY OF ORIGINAL CORNER ESTABLISHMENT

Original Surveyor:
 Date of Survey: Commenced
 Completed
 Original B.T.'S

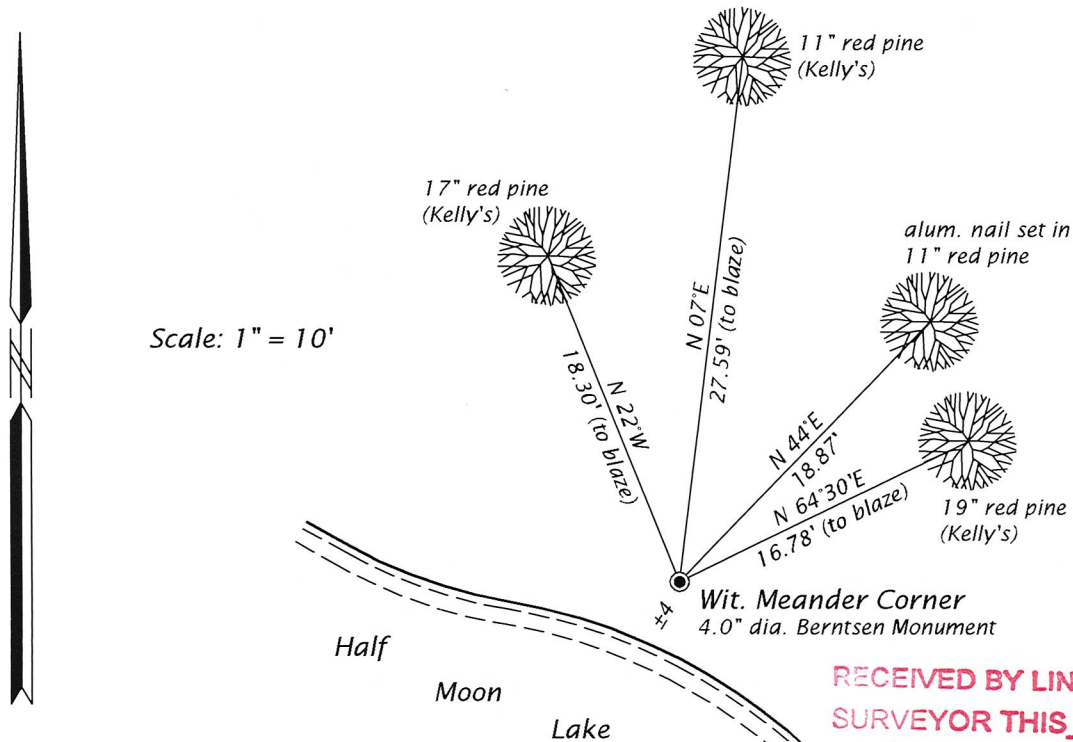
SEE PREVIOUS U.S.P.L.S. MONUMENT RECORD DATED NOVEMBER 6, 1974.

(f)(g)(h) DESCRIPTION OF MONUMENT FOUND AT THIS CORNER AND IF IT WAS ACCEPTED, STATE ALL EVIDENCE (MATERIAL, TESTIMONIAL, OCCUPATIONAL, PLATS, RECORD, OTHER MONUMENTS) USED AS A BASIS FOR ESTABLISHING LOCATION. IF NOT ACCEPTED OR IF NOTHING WAS FOUND, STATE EVIDENCE USED AS BASIS FOR ESTABLISHING LOCATION. IF REESTABLISHED THROUGH LOST CORNER PROPORTIONATE METHODS, INDICATE ALL MONUMENTS, DISTANCES AND DIRECTIONS USED TO ESTABLISH. INDICATE TYPE OF MONUMENT AND SIGN POST FOUND OR SET.

This is a perpetuation of a previous U.S.P.L.S. Monument Record by William Kelly, RLS, dated November 6, 1974, and filed in the office of the Lincoln County Register of Deeds. A complete history of the corner can be found on the previous monument record. I accept the previous location as a true and faithful perpetuation or reestablishment of the original corner location and further perpetuate it as follows.

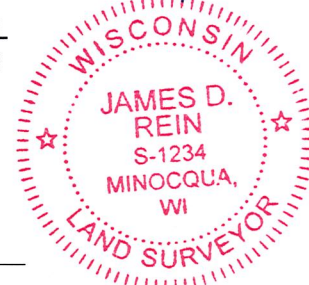
June 11 2019, I, James D. Rein, P.L.S. No. S-1234, found and accepted the Berntsen Monument set by Kelly in 1974. The iron pipe 8.2' southerly is now gone - see below for updated witnesses.

(c)(d)(e) PLAN VIEW OF CORNER WITH TIES TO AT LEAST 4 WITNESS MONUMENTS. IF IN DISAGREEMENT WITH PREVIOUSLY ESTABLISHED CORNER, SHOW THE DISTANCE BETWEEN THE TWO CORNERS AND ALSO INDICATE THE TIES TO THE DISPUTED CORNER.



RECEIVED BY LINCOLN COUNTY SURVEYOR THIS 3RD DAY OF September 20 19
Tom Dull
 COUNTY SURVEYOR

(i) I, JAMES D. REIN, PROFESSIONAL LAND SURVEYOR NO. S-1234 HEREBY CERTIFY THAT THE CORNER LOCATION ON THIS RECORD WAS DETERMINED BY ME OR UNDER MY DIRECTION AND CONTROL AND THAT THIS U.S. PUBLIC LAND SURVEY MONUMENT RECORD IS CORRECT AND COMPLETE TO THE BEST OF MY KNOWLEDGE AND BELIEF.



James D. Rein Aug 28, 2019
 SIGNATURE DATE

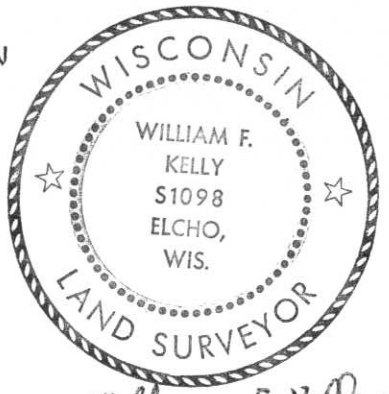
INDEX NO. H-1-13

CERTIFIED LAND CORNER RESTORATION

Index No. H.I-13

State of Wisconsin }
County of LINCOLN } ss.

History of original corner establishment:



William F. Kelly

I, William F. Kelly, do hereby certify that on the 6th day of NOVEMBER, 19 74, I found evidence of the MEANDER corner of THE WEST LINE SECT 10 Township 35, North, Range 6E, Fourth, Principal Meridian, as described hereon; and that from this evidence I established a new monument and accessories as described hereon to perpetuate the original location of this corner.

Description of corner evidence found:
I located a 1" Iron Pipe adjacent to a rotted off wood Post 2 FT FROM THE EDGE OF THE BANK OF HALF MOON LAKE identified by the resident witness as the MEANDER CORNER. Pipe in line with the W 1/4 Cor and the SW 1/8 Cor SECT 10

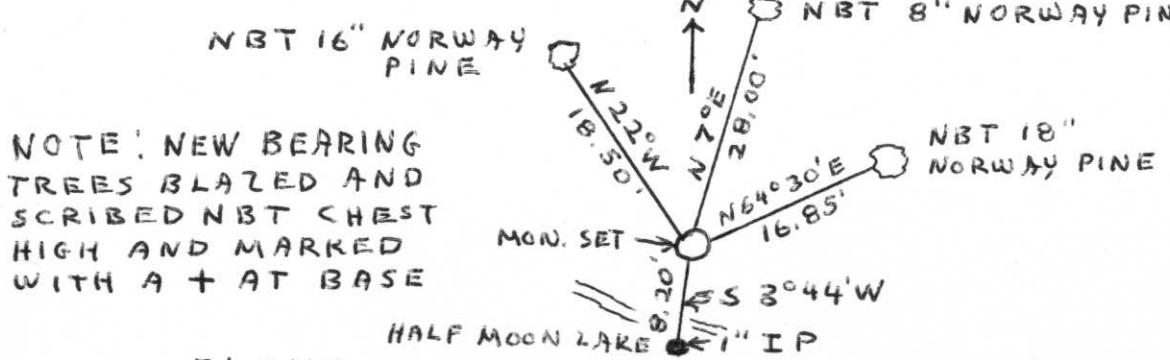
Resident witnesses:

B. BROWN

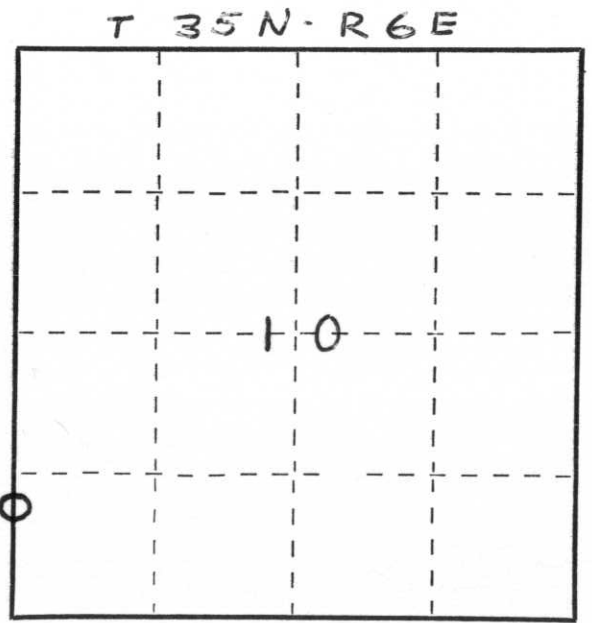
I SET A MONUMENT FLUSH WITH THE GROUND



Description of monument and accessories I established to perpetuate the original location of this corner.



NOTE: NEW BEARING TREES BLAZED AND SCRIBED NBT CHEST HIGH AND MARKED WITH A + AT BASE



○ = Corner monument restored.

Dated at ELCHO, Wis., this 6th day of NOVEMBER, 19 74.

Signature William F. Kelly Title REG. LAND SURVEYOR Registration No. S-1098
(County Surveyor, Registered Land Surveyor, or other duly authorized official)

Office of Register of Deeds, County of _____, I hereby certify that the within instrument was filed in this office for record on the _____ day of _____, 19 _____ at _____ o'clock _____ M.

(Register of Deeds)

By _____ Deputy