

U.S. PUBLIC LAND SURVEY MONUMENT RECORD

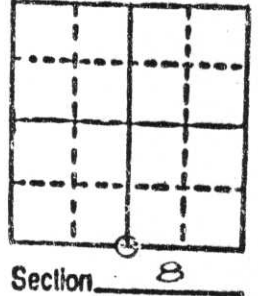
Note: This form is intended and designed to fulfill all requirements of Wisconsin Administrative Code, Chapter A-E 6.02, U.S. Public Land Survey Monument Record (3) (a) (b) (c) (d) (e) (f) (g) (h) (i). An additional sheet may be added if necessary to conform with said requirements.

(a) Corner location: Township 35 North

Range 6 East

Town Bradley

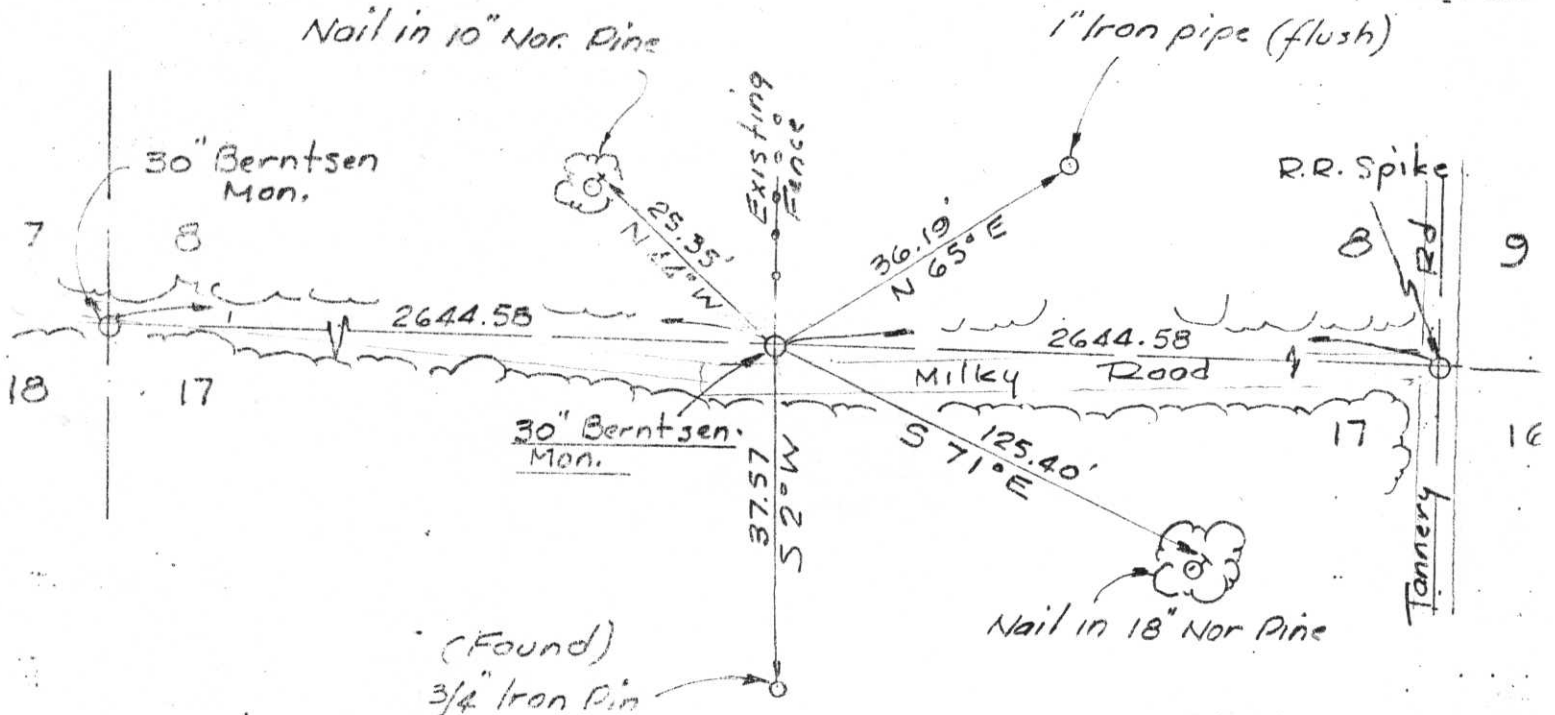
County Lincoln



b) (f) (g) (h) Description of monument found at this corner and if it was accepted, state all evidence (material, testimonial, occupational, plats, records, other monuments) used as a basis for accepting. If not accepted or if nothing was found, state evidence used as basis for establishing location. If reestablished through lost corner proportionate methods, indicate all monuments, distances and directions used to establish.

A quarter-corner was established (by proportionate measurement) on line & midway between the two South section corners after adjoining property owners, Power Co. Engineers, Township officials, County records, etc could provide no information or knowledge of a marker existing at the South quarter-corner location. After a search of the area was made by excavating and a check with a metal detector a 30" long aluminum Berntsen monument was set 6" below ground surface

c) (d) (e) Plan view of corner with ties to at least 4 witness monuments. If in disagreement with previously established corner, show the distances between the two corners and also indicate the ties to the disputed corner.



(f) I, Maurice C. Blyst

(Type or print name) certify that the corner location on this record was determined by me or under my direction and control and that this U.S. Public Land Survey Monument Record is correct and complete to the best of my knowledge and belief.

AFFIX
SEAL
HERE

Maurice C Blyst Oct 23, 1985

Signature

Date

Index No. I-7