

CERTIFIED LAND CORNER RESTORATION

Index No. I-9

State of Wisconsin }  
County of Lincoln } ss.

History of original corner establishment:

Original corner set by Deputy Surveyor Alfred Millard, Oct., 1961.

I Anthony B. Kiedrowski do hereby certify that on the 28th day of Sept., 1976, I found evidence of the northwest corner of Sec 16-35-6E Township....., North, Range....., Fourth, Principal Meridian, as described hereon; and that from this evidence I established a new monument and accessories as described hereon to perpetuate the original location of this corner.

Description of corner evidence found:

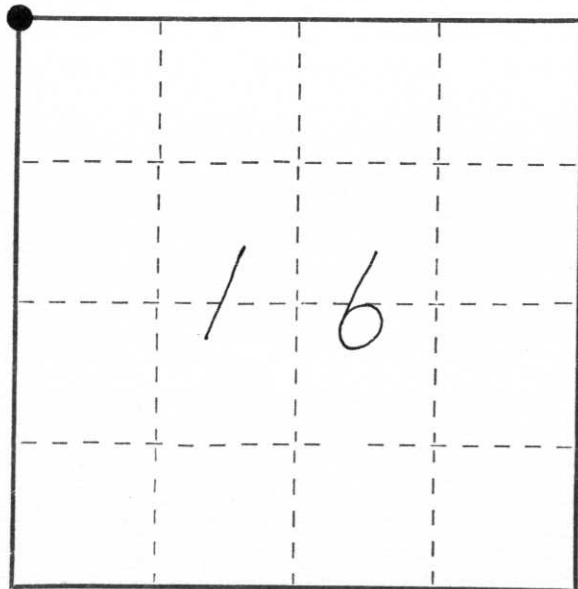
Excavated by hand in blacktop road. Found sizable upright pointed stone. Found railroad spike above it. Left stone in place, filled hole with fresh blacktop and reset railroad spike. No record of who set stone. Accepted as correct after an EDM and T-2 traverse of the entire section.

Resident witnesses:

.....  
.....  
.....

Description of monument and accessories I established to perpetuate the original location of this corner.

See reverse side.



○ = Corner monument restored.



Dated at Wis. Rapids, Wis., this 5th day of Oct, 1976

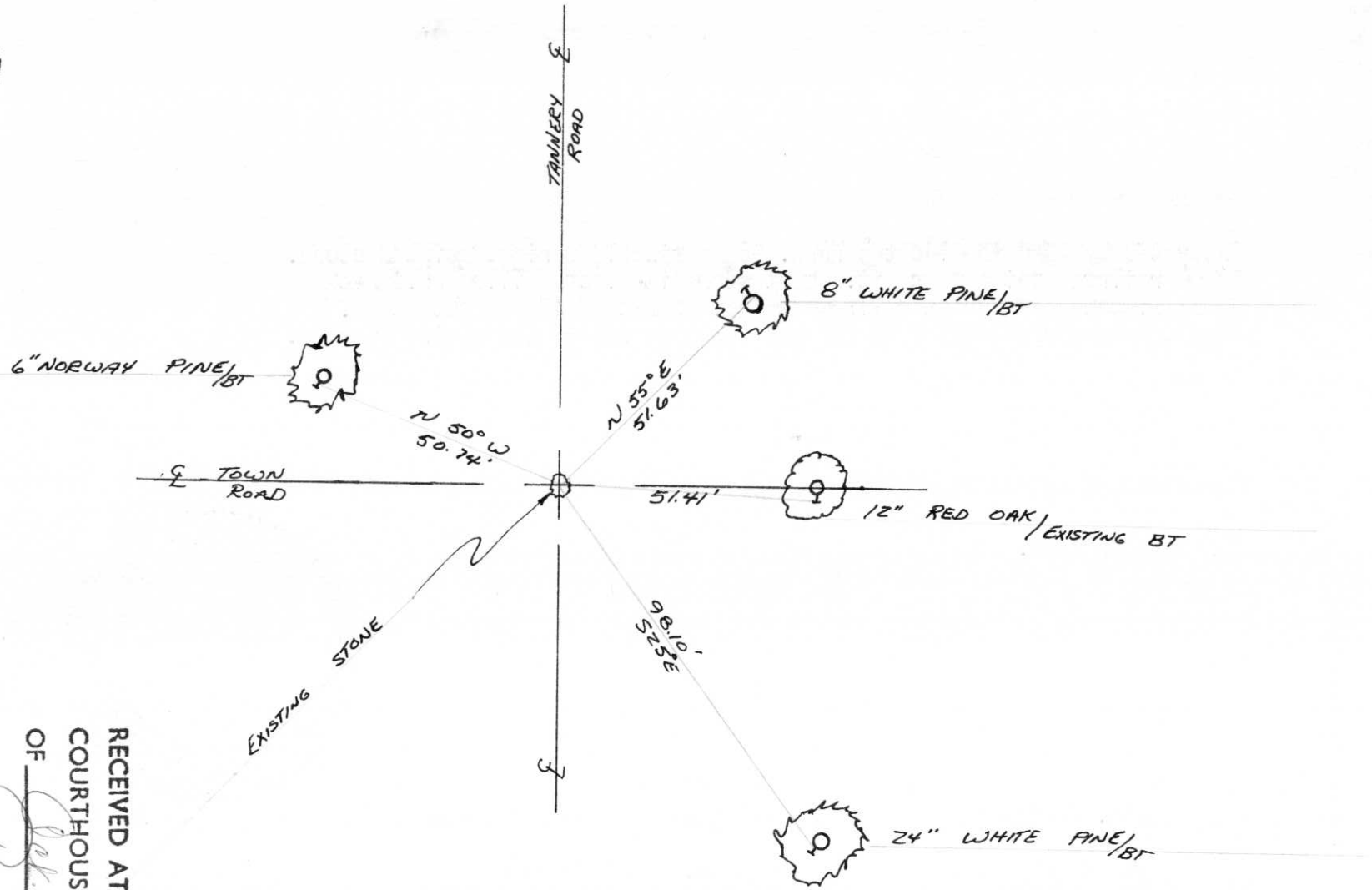
Signature Anthony B. Kiedrowski Title Reg. Land Surveyor Registration No. S-878  
(County Surveyor, Registered Land Surveyor, or other duly authorized official)

Office of Register of Deeds, County of....., I hereby certify that the within instrument was filed in this office for record on the.....day of....., 19..... at.....o'clock..... M..

.....  
(Register of Deeds)

By.....Deputy

NW CORNER 16-35-6



RECEIVED AT LINCOLN COUNTY  
 COURTHOUSE THIS 28<sup>th</sup> DAY  
 OF Feb. 1976.  
Pat Parker  
 TAX DESCRIPTION OFFICE