

# U.S. PUBLIC LAND SURVEY MONUMENT RECORD

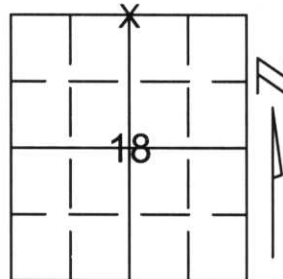
Note: This form is intended and designed to fulfill all requirements of Wisconsin Administrative Code, Chapter A-E 5.02, U.S. Public Land Survey Monument Record (3)(a)(b)(c)(d)(e)(f)(g)(h)(i). An additional sheet may be added if necessary to conform with said requirements.

(a) Corner location: Township 35 North

Range 6 East

Town/City/Village BRADLEY

County LINCOLN

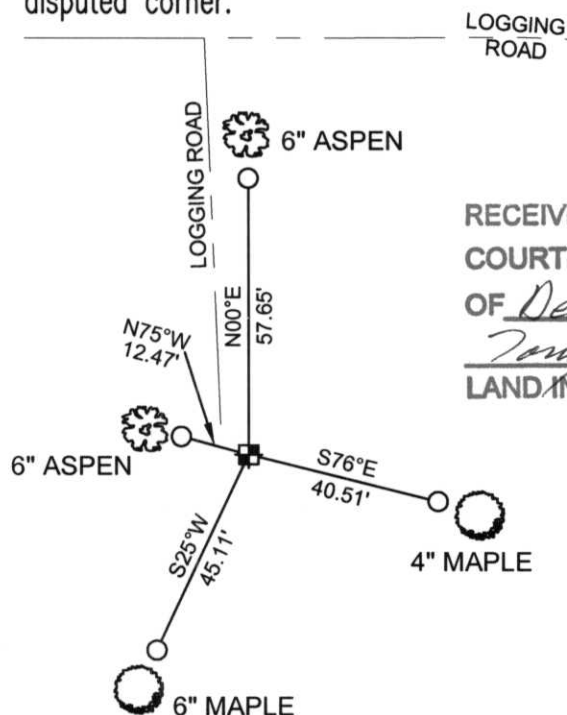


Section 18

(b)(f)(g)(h) Description of monument found at this corner and if it was accepted, state all evidence (material, testimonial, occupational, plats, records, other monuments) used as a basis for accepting. If not accepted or if nothing was found, state evidence used as basis for establishing location. If reestablished through lost corner proportionate methods, indicate all monuments, distances and directions used to establish.

WE FOUND A 1-1/2" x 36" IRON PIPE IN A ROCK AND DIRT PILE AT THE END OF LOGGING ROAD. WE PRO-RATED THE DISTANCE FROM THE 40 CORNER EAST AND WEST OF THE NORTH 1/4 CORNER. WE USED THE FOUND NORTHEAST CORNER AND NORTHWEST CORNER FOR LINE. THE CORNER LOCATION FELL WITHIN 2' OF THE FOUND 1-1/2" IRON PIPE. WE SET A LINCOLN COUNTY MONUMENT AT THE IRON PIPE LOCATION TO PERPETUATE CORNER AND TIED OUT.

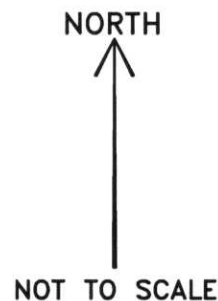
(c)(d)(e) Plan view of corner with ties to at least 4 witness monuments. If in disagreement with previously established corner, show the distances between the two corners and also indicate the ties to the disputed corner.



RECEIVED AT LINCOLN COUNTY  
COURTHOUSE THIS 21<sup>ST</sup> DAY  
OF December 20 01  
Tommy Dabner  
LAND INFORMATION OFFICE

COORDINATES ARE REFERENCED TO THE LINCOLN COUNTY COORDINATE SYSTEM AS DEVELOPED BY THE WISCONSIN DEPARTMENT OF TRANSPORTATION AND WERE DETERMINED BY GPS OBSERVATIONS ON CONTROL POINTS AS SUPPLIED BY LINCOLN COUNTY.

BEARINGS ARE REFERENCED TO MAGNETIC NORTH.



- - SET 3/4" x 30" REBAR W/ ALUM CAP 1' FROM BEARING TREE
- ⊠ - NORTH 1/4 CORNER SET LINCOLN COUNTY MONUMENT W/ ALUM CAP

(i) I, Thomas A. Radenz, RLS certify that the corner location on this record was determined by me or under my direction and control and that this U.S. Public Land Survey Monument Record is correct and complete to the best of my knowledge and belief.

Thomas A. Radenz  
Signature  
12/18/01  
Date



Index No. 7-3