

Attachment to Tie Sheet A,B-5, T35N, R6E

43506063500

I visited the corner on 6/05/2018 to verify the corner and reference tie monumentation. I found the Berntsen monument and all 4 ties from Thomas Radenz tie sheet (12/21/2001). The 2 Southeasterly ties measure well, the Westerly and Northerly ties measured as follows:

Westerly tie, 10.25' (10.19') tree near tie has been cut down; Northerly tie, 10.42' (10.34').

NOTE

- The Jack Pine near the Southern most Southeasterly tie is dead and fallen.

 6/08/18

Anthony R. Dallman, PLS-2405

Lincoln County Surveyor





Stock No. 26273

U.S. PUBLIC LAND SURVEY MONUMENT RECORD

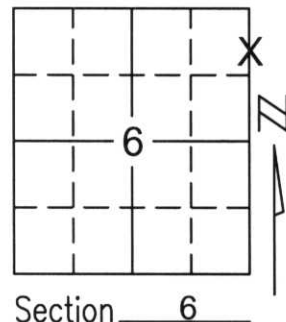
Note: This form is intended and designed to fulfill all requirements of Wisconsin Administrative Code, Chapter A-E 5.02, U.S. Public Land Survey Monument Record (3)(a)(b)(c)(d)(e)(f)(g)(h)(i). An additional sheet may be added if necessary to conform with said requirements.

(a) Corner location: Township 35 North

Range 6 East

Town/City/Village BRADLEY

County LINCOLN

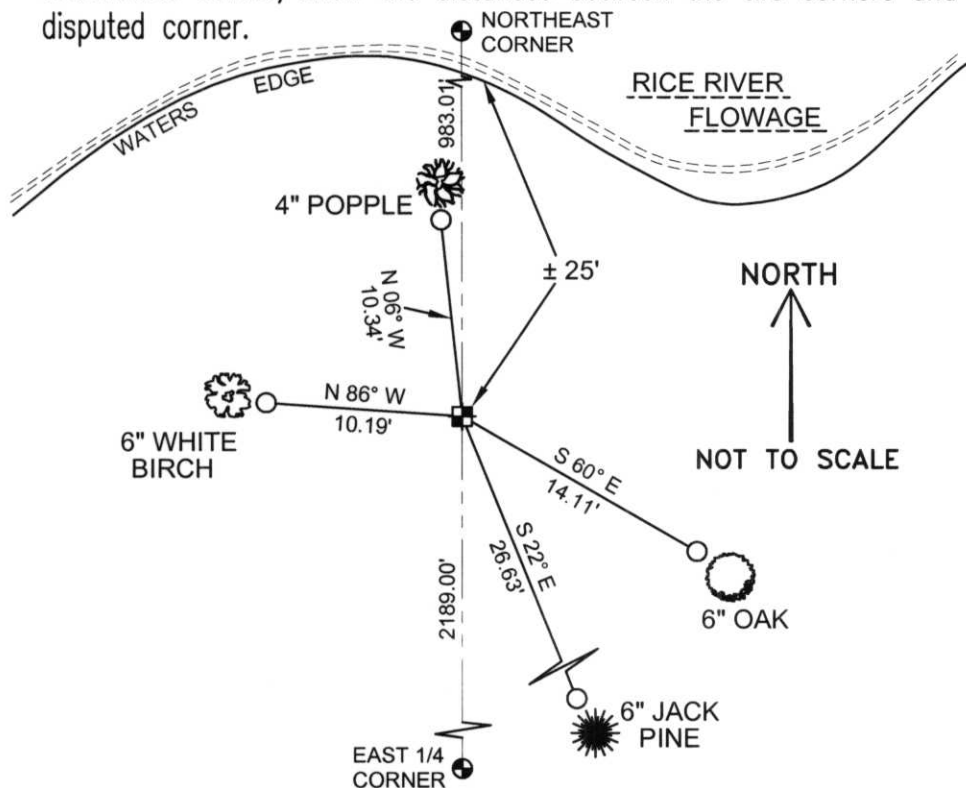


(b)(f)(g)(h) Description of monument found at this corner and if it was accepted, state all evidence (material, testimonial, occupational, plats, records, other monuments) used as a basis for accepting. If not accepted or if nothing was found, state evidence used as basis for establishing location. If reestablished through lost corner proportionate methods, indicate all monuments, distances and directions used to establish.

THE NORTHEAST CORNER OF SECTION 6 FALLS IN THE RICE RIVER FLOWAGE. AFTER REVIEW OF THE SURROUNDING SECTION, WE HELD THE CALCULATED POSITION SHOWN ON GLEN BARKER'S "PLAT OF SURVEY" LOCATED IN SECTION 31, TOWNSHIP 36 NORTH, RANGE 6 EAST. WE FOUND A 1-1/2" IRON PIPE ON THE SOUTH SHORE WHICH FITS LINE BETWEEN THE CALCULATED NORTHEAST CORNER AND THE EAST 1/4 CORNER OF SECTION 6 WITHIN .50 FEET. SET LINCOLN COUNTY MONUMENT TO PERPETUATED CORNER LOCATION.

RECEIVED AT LINCOLN COUNTY COURTHOUSE THIS 21ST DAY OF December 20 01
Tony Dallen
LAND INFORMATION OFFICE

(c)(d)(e) Plan view of corner with ties to at least 4 witness monuments. If in disagreement with previously established corner, show the distances between the two corners and also indicate the ties to the disputed corner.



COORDINATES ARE REFERENCED TO THE LINCOLN COUNTY COORDINATE SYSTEM AS DEVELOPED BY THE WISCONSIN DEPARTMENT OF TRANSPORTATION AND WERE DETERMINED BY GPS OBSERVATIONS ON CONTROL POINTS AS SUPPLIED BY LINCOLN COUNTY.

BEARINGS ARE REFERENCED TO MAGNETIC NORTH.

- - SET 3/4" x 30" REBAR W/ ALUM CAP 1' FROM BEARING TREE
- ⊕ - SOUTH MEANDER CORNER FOR NE 1/4 CORNER SET LINCOLN COUNTY MONUMENT W/ ALUM CAP

(i) I, Thomas A. Radenz, RLS certify that the corner location on this record was determined by me or under my direction and control and that this U.S. Public Land Survey Monument Record is correct and complete to the best of my knowledge and belief.

Thomas A. Radenz
Signature _____ Date 12/21/01



Index No. AB-5