

# U.S. PUBLIC LAND SURVEY MONUMENT RECORD

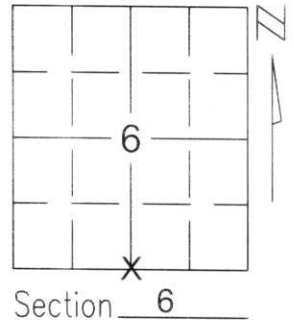
Note: This form is intended and designed to fulfill all requirements of Wisconsin Administrative Code, Chapter A-E 5.02, U.S. Public Land Survey Monument Record (3)(a)(b)(c)(d)(e)(f)(g)(h)(i). An additional sheet may be added if necessary to conform with said requirements.

(a) Corner location: Township 35 North

Range 6 East

Town/City/Village BRADLEY

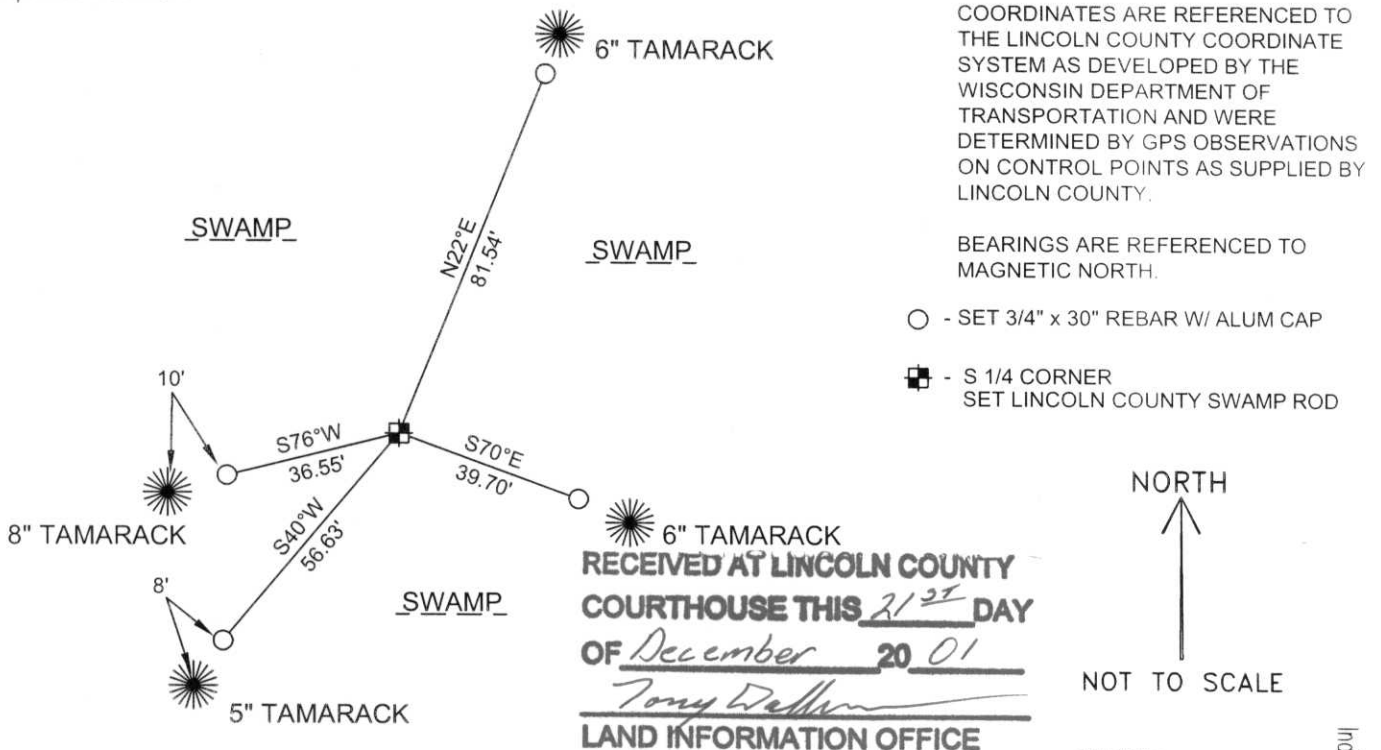
County LINCOLN



(b)(f)(g)(h) Description of monument found at this corner and if it was accepted, state all evidence (material, testimonial, occupational, plats, records, other monuments) used as a basis for accepting. If not accepted or if nothing was found, state evidence used as basis for establishing location. If reestablished through lost corner proportionate methods, indicate all monuments, distances and directions used to establish.

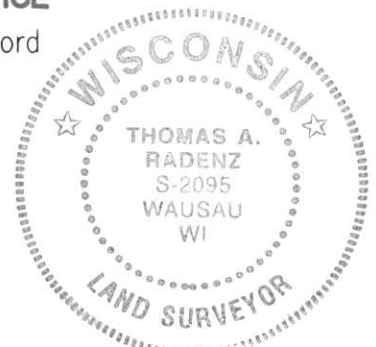
WE SEARCHED THE TAMARACK SWAMP AND FOUND NO EVIDENCE OF THE CORNER. DETERMINED SOUTH 1/4 CORNER LOCATION BY EXTENDING THE NORTH-SOUTH 1/4 LINE THROUGH A FOUND 2" IRON PIPE AT THE CENTER OF SECTION 6 AND INTERSECTING ON A STRAIGHT LINE BETWEEN THE SOUTHEAST CORNER AND THE SOUTHWEST CORNER OF SECTION 6. THIS LOCATION FITS THE PRORATED DISTANCE BETWEEN THE SOUTHWEST AND SOUTHEAST CORNERS WITHIN 1 FOOT. SET LINCOLN COUNTY 60" SWAMP ROD. TIED OUT MONUMENT TO PERPETUATE CORNER LOCATION.

(c)(d)(e) Plan view of corner with ties to at least 4 witness monuments. If in disagreement with previously established corner, show the distances between the two corners and also indicate the ties to the disputed corner.



(i) I, Thomas A. Radenz, RLS certify that the corner location on this record was determined by me or under my direction and control and that this U.S. Public Land Survey Monument Record is correct and complete to the best of my knowledge and belief.

Thomas A. Radenz Signature 12/18/01 Date



Index No. E-3