



Stock No. 26273

U.S. PUBLIC LAND SURVEY MONUMENT RECORD

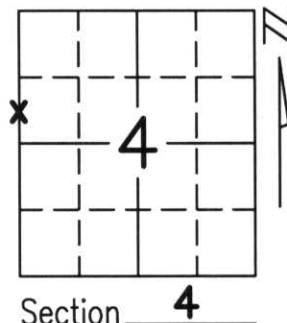
Note: This form is intended and designed to fulfill all requirements of Wisconsin Administrative Code, Chapter A-E 5.02, U.S. Public Land Survey Monument Record (3)(a)(b)(c)(d)(e)(f)(g)(h)(i). An additional sheet may be added if necessary to conform with said requirements.

(a) Corner location: Township 35 North

Range 6 East

Town/City/Village BRADLEY

County LINCOLN



Section 4

(b)(f)(g)(h) Description of monument found at this corner and if it was accepted, state all evidence (material, testimonial, occupational, plats, records, other monuments) used as a basis for accepting. If not accepted or if nothing was found, state evidence used as basis for establishing location. If reestablished through lost corner proportionate methods, indicate all monuments, distances and directions used to establish.

USING ESTABLISHED WEST LINE OF SOUTHWEST 1/4, SECTION 4 NORTHWEST CORNER TO SOUTHWEST CORNER MEASURE WITHIN 1.4 FEET OF ORIGINAL CHAINAGE. PRORATED DISTANCE ALONG WEST LINE OF SOUTHWEST 1/4 TO CREATE POSITION FOR WEST 1/4, LOCATED IN LAKE NOKOMIS, SET MEANDER CORNER ONLINE BETWEEN WEST 1/4 CORNER & NORTHWEST CORNER.

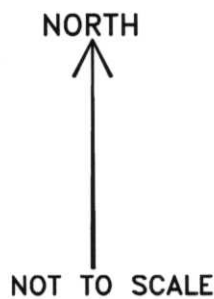
RECEIVED AT LINCOLN COUNTY COURTHOUSE THIS 21ST DAY OF December 20 01
Tony Dahn
LAND INFORMATION OFFICE

(c)(d)(e) Plan view of corner with ties to at least 4 witness monuments. If in disagreement with previously established corner, show the distances between the two corners and also indicate the ties to the disputed corner.

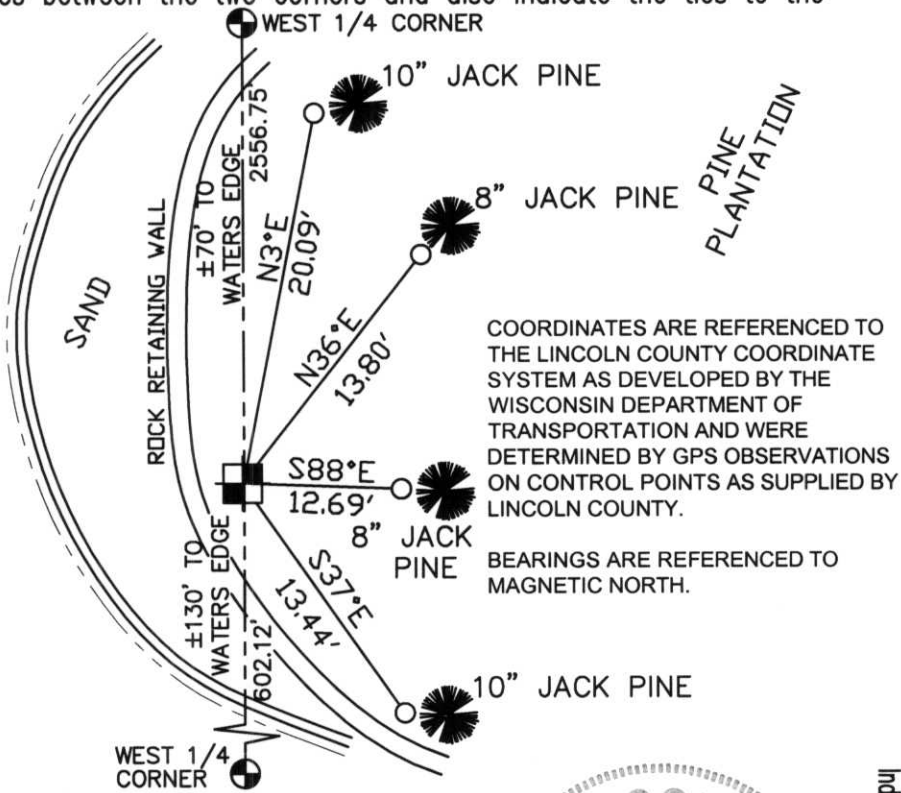
○ -SET 3/4"X30"REBAR W/ ALUM CAP ±1' FROM TREES

■ -MEANDER CORNER

NOTE: MONUMENT IS 0.5' WEST OF FENCE



LAKE NOKOMIS

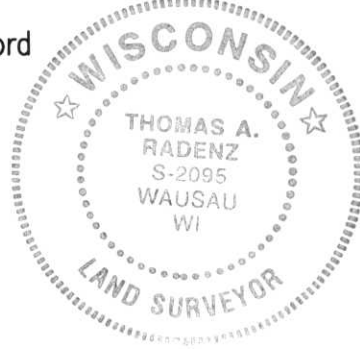


COORDINATES ARE REFERENCED TO THE LINCOLN COUNTY COORDINATE SYSTEM AS DEVELOPED BY THE WISCONSIN DEPARTMENT OF TRANSPORTATION AND WERE DETERMINED BY GPS OBSERVATIONS ON CONTROL POINTS AS SUPPLIED BY LINCOLN COUNTY.

BEARINGS ARE REFERENCED TO MAGNETIC NORTH.

(i) I, Thomas A. Radenz, RLS certify that the corner location on this record was determined by me or under my direction and control and that this U.S. Public Land Survey Monument Record is correct and complete to the best of my knowledge and belief.

Thomas A. Radenz Signature 12/21/01 Date



Index No. B3-9