

U.S. PUBLIC LAND SURVEY MONUMENT RECORD

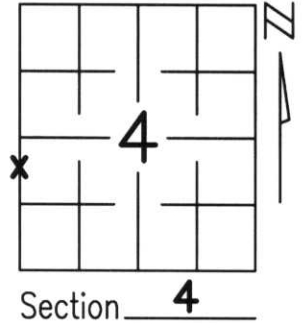
Note: This form is intended and designed to fulfill all requirements of Wisconsin Administrative Code, Chapter A-E 5.02, U.S. Public Land Survey Monument Record (3)(a)(b)(c)(d)(e)(f)(g)(h)(i). An additional sheet may be added if necessary to conform with said requirements.

(a) Corner location: Township 35 North

Range 6 East

Town/City/Village BRADLEY

County LINCOLN

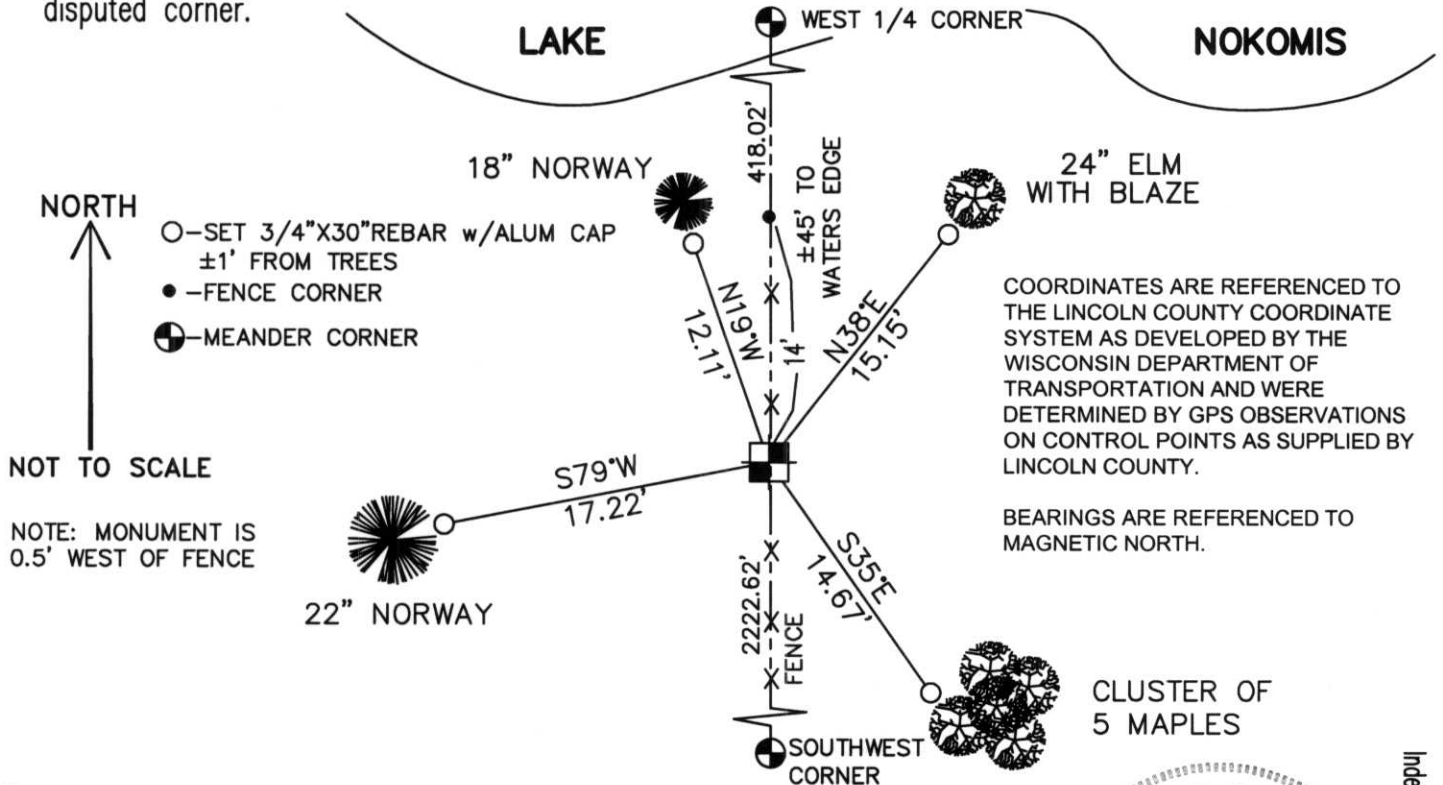


(b)(f)(g)(h) Description of monument found at this corner and if it was accepted, state all evidence (material, testimonial, occupational, plats, records, other monuments) used as a basis for accepting. If not accepted or if nothing was found, state evidence used as basis for establishing location. If reestablished through lost corner proportionate methods, indicate all monuments, distances and directions used to establish.

AFTER EXTENSIVE RESEARCH IN ADJOINING SECTIONS, THE WEST 1/4 CORNER OF SECTION 4 WAS ESTABLISHED BY USING THE NOKOMIS PARK SUBDIVISION FROM 1949 FOR LINE, AND USING THE PRORATED DISTANCE FROM THE NORTHWEST TO THE SOUTHWEST FOR DISTANCE. THE CORNER FALLS IN LAKE SO A MENDER CORNER WAS SET SOUTH OF CORNER ON LINE TO PERPETUATE CORNER LOCATION.

RECEIVED AT LINCOLN COUNTY
 COURTHOUSE THIS 21ST DAY
 OF December 20 01
Tony Dallon
 LAND INFORMATION OFFICE

(c)(d)(e) Plan view of corner with ties to at least 4 witness monuments. If in disagreement with previously established corner, show the distances between the two corners and also indicate the ties to the disputed corner.



(i) I, Thomas A. Radenz, RLS certify that the corner location on this record was determined by me or under my direction and control and that this U.S. Public Land Survey Monument Record is correct and complete to the best of my knowledge and belief.

Thomas A. Radenz
 Signature _____ Date 12/21/01

Index No. CD-9

WISCONSIN
 THOMAS A. RADENZ
 S-2095
 WAUSAU
 WI
 LAND SURVEYOR