

U.S. PUBLIC LAND SURVEY MONUMENT RECORD

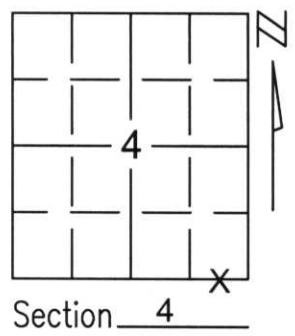
Note: This form is intended and designed to fulfill all requirements of Wisconsin Administrative Code, Chapter A-E 5.02, U.S. Public Land Survey Monument Record (3)(a)(b)(c)(d)(e)(f)(g)(h)(i). An additional sheet may be added if necessary to conform with said requirements.

(a) Corner location: Township 35 North

Range 6 East

Town/City/Village BRADLEY

County LINCOLN

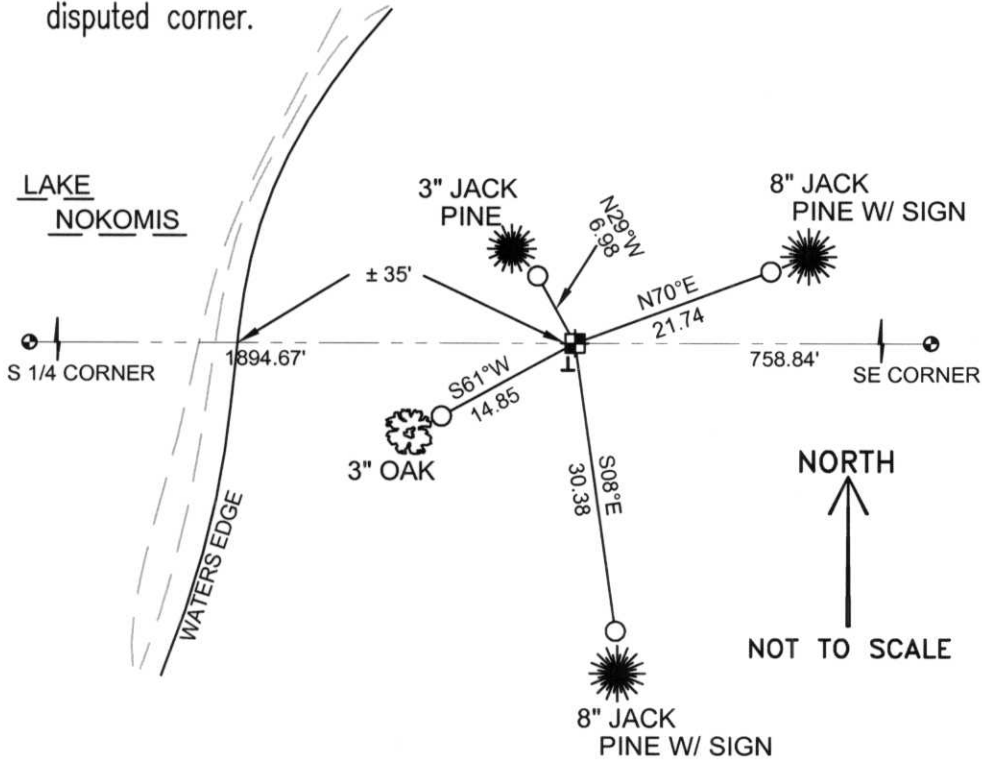


(b)(f)(g)(h) Description of monument found at this corner and if it was accepted, state all evidence (material, testimonial, occupational, plats, records, other monuments) used as a basis for accepting. If not accepted or if nothing was found, state evidence used as basis for establishing location. If reestablished through lost corner proportionate methods, indicate all monuments, distances and directions used to establish.

AFTER EXTENSIVE RESEARCH IN ADJOINING SECTIONS, WE FOUND NO EVIDENCE OF THE SOUTH 1/4 CORNER. THIS SECTION CORNER FALLS IN LAKE NOKOMIS. WE FOUND NO SURVEYS OR POSSESSION LINES THAT WERE TIED TO THE CORNER. WE CALCULATED A SINGLE PROPORTION POSITION FOR THE SOUTH 1/4 CORNER AND SET THE MEANDER CORNER.
SET LINCOLN COUNTY MONUMENT AND TIED OUT CORNER.

RECEIVED AT LINCOLN COUNTY
COURTHOUSE THIS 21ST DAY
OF December 20 01
Tom Radenz
LAND INFORMATION OFFICE

(c)(d)(e) Plan view of corner with ties to at least 4 witness monuments. If in disagreement with previously established corner, show the distances between the two corners and also indicate the ties to the disputed corner.



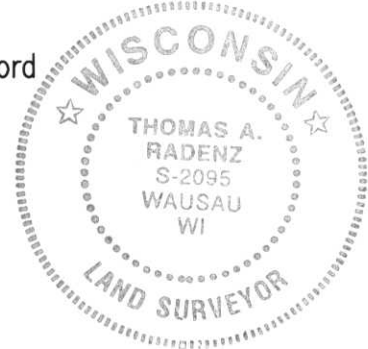
COORDINATES ARE REFERENCED TO THE LINCOLN COUNTY COORDINATE SYSTEM AS DEVELOPED BY THE WISCONSIN DEPARTMENT OF TRANSPORTATION AND WERE DETERMINED BY GPS OBSERVATIONS ON CONTROL POINTS AS SUPPLIED BY LINCOLN COUNTY.

BEARINGS ARE REFERENCED TO MAGNETIC NORTH.

- - SET 3/4" x 30" REBAR W/ ALUM. CAP
- ⊕ - EAST MEANDER CORNER FOR S1/4 CORNER SET LINCOLN COUNTY MOUNMENT W/ ALUM CAP
- ⊥ - SET VINAL "T" MARKER POST

(i) I, Thomas A. Radenz, RLS certify that the corner location on this record was determined by me or under my direction and control and that this U.S. Public Land Survey Monument Record is correct and complete to the best of my knowledge and belief.

Thomas A. Radenz
Signature _____ Date 12/21/01



Index No. E-1213