

U.S. PUBLIC LAND SURVEY MONUMENT RECORD

NOTE: THIS FORM IS INTENDED AND DESIGNED TO FULFILL ALL REQUIREMENTS OF WISCONSIN ADMINISTRATIVE CODE, CHAPTER A-E 7.08, U.S. PUBLIC LAND SURVEY MONUMENT RECORD (3)(a)(b)(c)(d)(e)(f)(g)(h)(i). ADDITIONAL SHEETS MAY BE NECESSARY TO CONFORM TO SAID REQUIREMENTS.

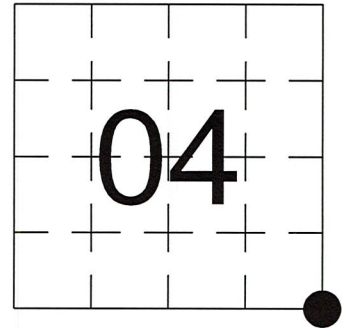
T 35 N, R 6 E

(a) CORNER LOCATION:

SOUTHEAST CORNER, SECTION 04
 TOWNSHIP 35 NORTH
 RANGE 6 EAST
 TOWN OF BRADLEY
 LINCOLN COUNTY
 WISCONSIN

(b) HISTORY OF ORIGINAL CORNER:

ORIGINAL SURVEYOR: See Previous Tie Sheet
 COMMENCING DATE:
 COMPLETION DATE:
 ORIGINAL BEARING TREES:



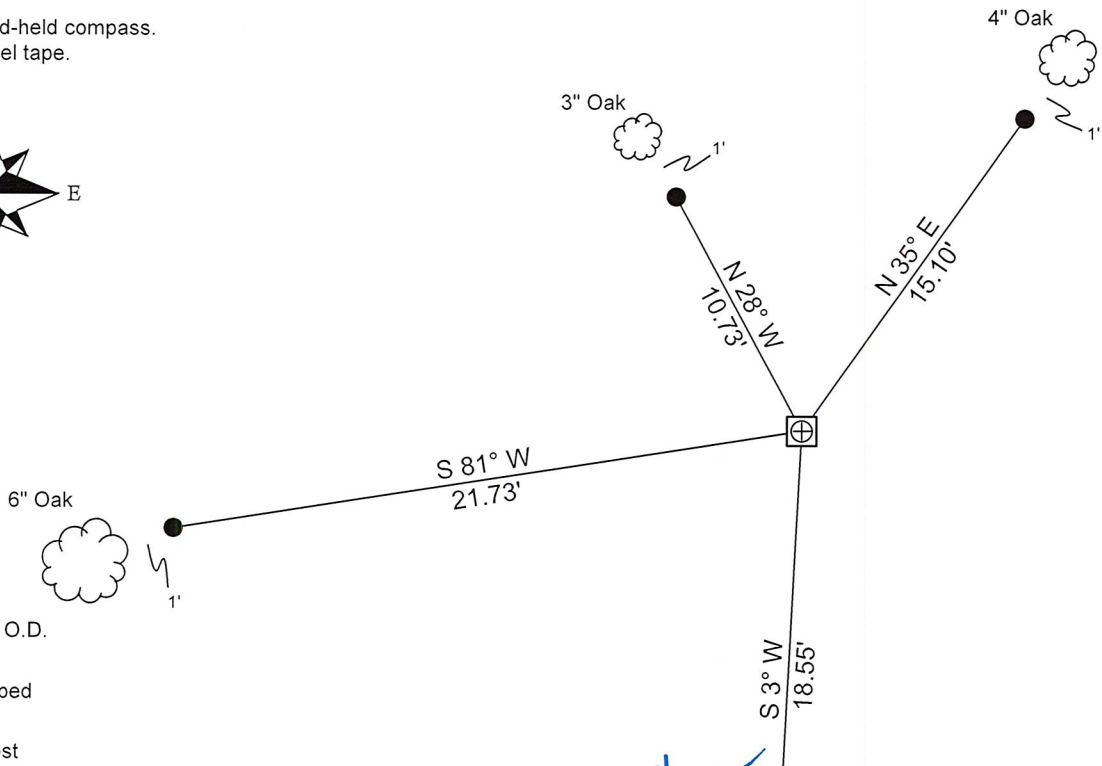
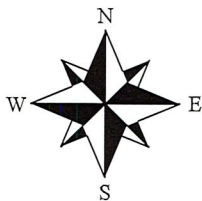
(f)(g)(h) DESCRIPTION OF MONUMENT FOUND AT THIS CORNER AND IF IT WAS ACCEPTED. STATE ALL EVIDENCE (MATERIAL, TESTIMONIAL, OCCUPATIONAL, PLATS, RECORDS, OTHER MONUMENTS) USED AS A BASIS FOR ESTABLISHING LOCATION. IF RE-ESTABLISHING THROUGH LOST CORNER PROPORTIONATE METHODS, INDICATE ALL MONUMENTS, DISTANCES, AND DIRECTIONS USED TO ESTABLISH. INDICATE TYPE OF MONUMENTS FOUND OR SET.

11/06/1974, William Kelly, found a 4" square Concrete Monument with a Brass Cap, up 18".

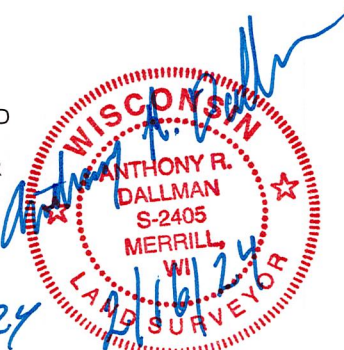
11/01/2023, I, Anthony R. Dallman, PLS-2405, found a 4" X 4" Brass Capped Concrete Monument, up 18". I accepted this location and set witness monuments, as shown in the sketch below, to further perpetuate the corner location.

(c)(d)(e) PLAN VIEW OF THE CORNER WITH TIES TO AT LEAST FOUR WITNESSES. IF IN DISAGREEMENT WITH PREVIOUSLY ESTABLISHED CORNER, SHOW THE DISTANCES BETWEEN THE TWO CORNERS AND ALSO THE TIES TO THE DISPUTED CORNER.

- Tie bearings by hand-held compass.
- Tie distances by steel tape.
- Not to scale.



I, ANTHONY R. DALLMAN, WISCONSIN PROFESSIONAL LAND SURVEYOR, S-2405, HEREBY CERTIFY THAT THE CORNER LOCATION ON THIS RECORD WAS REFERENCED BY ME OR UNDER MY DIRECTION AND CONTROL AND THAT THIS U.S. PUBLIC LAND SURVEY MONUMENT RECORD IS COMPLETE TO THE BEST OF MY KNOWLEDGE AND BELIEF.



Anthony R. Dallman 02/16/24
 ANTHONY R. DALLMAN, PLS S-2405

INDEX NO. E-13

43506040000_Mon-N



43506040000_North



43506040000_West



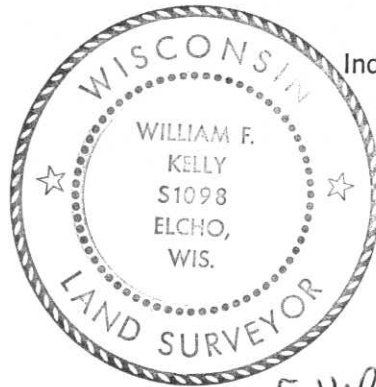
43506040000_South



43506040000_East



CERTIFIED LAND CORNER RESTORATION



Index No. E-13

State of Wisconsin }
County of LINCOLN } ss.

I, William F. Kelly, do hereby certify that on the 6th day of NOVEMBER, 1974, I found evidence of the North West corner of SECT. 10 Township 35, North, Range 6 E, Fourth, Principal Meridian, as described hereon; and that from this evidence I established a new monument and accessories as described hereon to perpetuate the original location of this corner.

Resident witnesses:

Virginia Davis

History of original corner establishment:

THIS MONUMENT PROBABLY SET ON RESURVEY OF RAILROAD RIGHT OF WAY

Description of corner evidence found:

LOCATED A 4" SQUARE CONCRETE MONUMENT WITH A BRASS CAP MARKED

$$K \begin{array}{c|c} 3 & 4 \\ \hline 9 & 10 \end{array}$$

35 6E

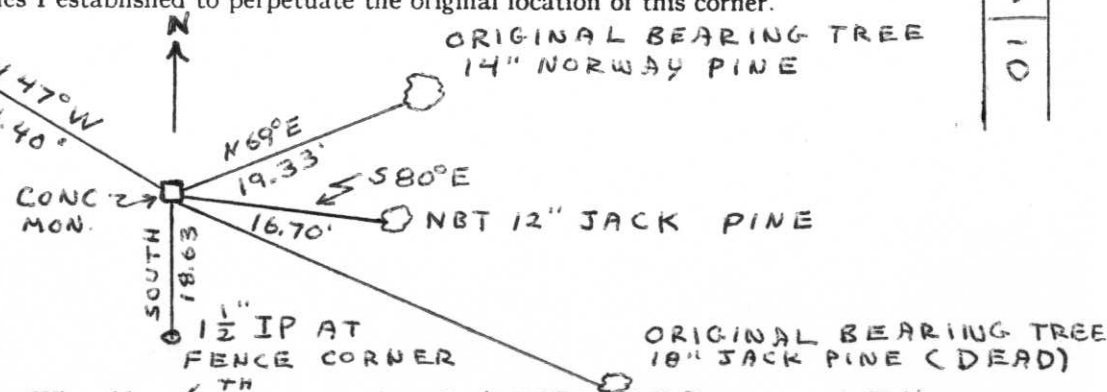
FOUND TWO ORIGINAL BEARING TREES TIED TO THE MONUMENT. BOTH TREES SCRIBED.

Description of monument and accessories I established to perpetuate the original location of this corner.

NBT 8" NORWAY PINE

ORIGINAL BEARING TREE 14" NORWAY PINE

NOTE: NEW BEARING TREES BLAZED AND SCRIBED NBT CHEST HIGH AND MARKED WITH A + AT BASE



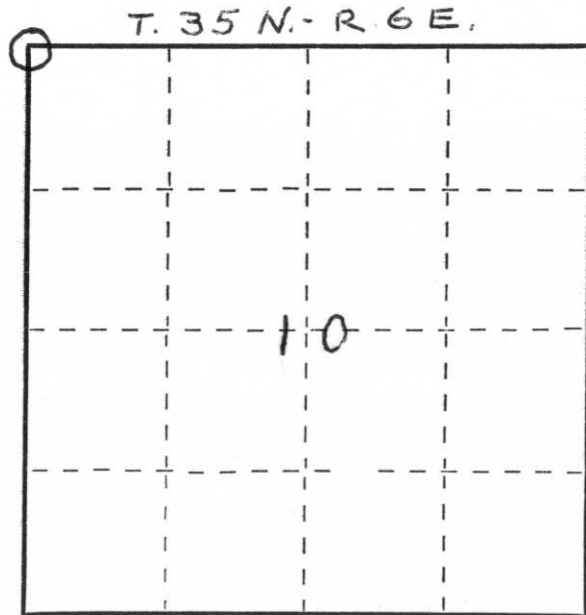
Dated at ELCHO, Wis., this 6th day of NOVEMBER, 1974.

Signature William F. Kelly Title REG. LAND SURVEYOR Registration No. S-1098
(County Surveyor, Registered Land Surveyor, or other duly authorized official)

Office of Register of Deeds, County of _____, I hereby certify that the within instrument was filed in this office for record on the _____ day of _____, 19____ at _____ o'clock _____ M.

(Register of Deeds)

By _____ Deputy



○ = Corner monument restored.

SECTION 10