

# U.S. PUBLIC LAND SURVEY MONUMENT RECORD

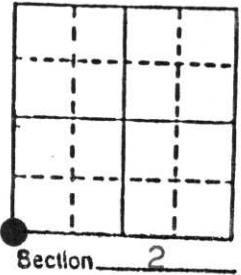
**Note:** This form is intended and designed to fulfill all requirements of Wisconsin Administrative Code, Chapter A-E 5.02, U.S. Public Land Survey Monument Record (3) (a) (b) (c) (d) (e) (f) (g) (h) (i). An additional sheet may be added if necessary to conform with said requirements.

(a) Corner location: Township 35 North

Range 6 East

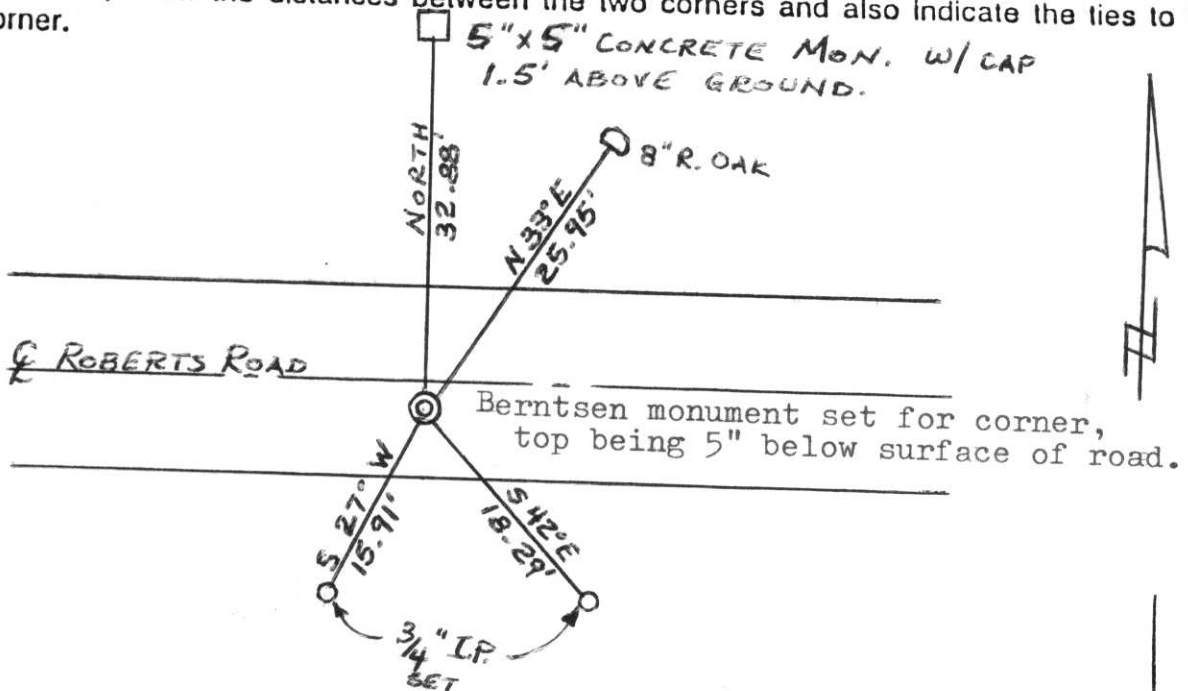
Town Bradley

County Lincoln



b) (f) (g) (h) Description of monument found at this corner and if it was accepted, state all evidence (material, testimonial, occupational, plats, records, other monuments) used as a basis for accepting. If not accepted or if nothing was found, state evidence used as basis for establishing location. If reestablished through lost corner proportionate methods, indicate all monuments, distances and directions used to establish. Original Gov't. Survey: July 1861 by Alfred Millard set wood post for corner with bearings, white pine 8 S 22 E 142 & white pine 8 S 4 W 213. On the map of the unrecorded Crystal View Subdivision, Hiram L. Krebs calls for this corner as being a concrete monument. In speaking with Mr. Krebs, he said the corner was an iron rod, with a concrete monument referencing the corner and being 2 rods North. I found this as he said. I set a Berntsen monument to replace the iron rod for the corner, the top of this monument being 5" below the surface & 2.75' South of the centreline of Roberts Road.

c) (d) (e) Plan view of corner with ties to at least 4 witness monuments. If in disagreement with previously established corner, show the distances between the two corners and also indicate the ties to the disputed corner.



(i) I, Lester J. Schmit  
 (type or print name) certify that the corner location on this record was determined by me or under my direction and control and that this U.S. Public Land Survey Monument Record is correct and complete to the best of my knowledge and belief.

Lester J. Schmit  
 Signature

10 Jun 90  
 Date



Index No. E-17