

U.S. PUBLIC LAND SURVEY MONUMENT RECORD

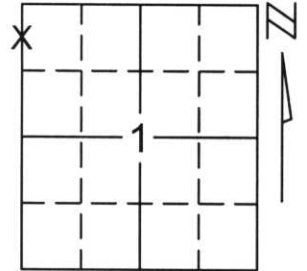
Note: This form is intended and designed to fulfill all requirements of Wisconsin Administrative Code, Chapter A-E 5.02, U.S. Public Land Survey Monument Record (3)(a)(b)(c)(d)(e)(f)(g)(h)(i). An additional sheet may be added if necessary to conform with said requirements.

(a) Corner location: Township 35 North

Range 6 East

Town/City/Village BRADLEY

County LINCOLN



Section 1

(b)(f)(g)(h) Description of monument found at this corner and if it was accepted, state all evidence (material, testimonial, occupational, plats, records, other monuments) used as a basis for accepting. If not accepted or if nothing was found, state evidence used as basis for establishing location. If reestablished through lost corner proportionate methods, indicate all monuments, distances and directions used to establish.

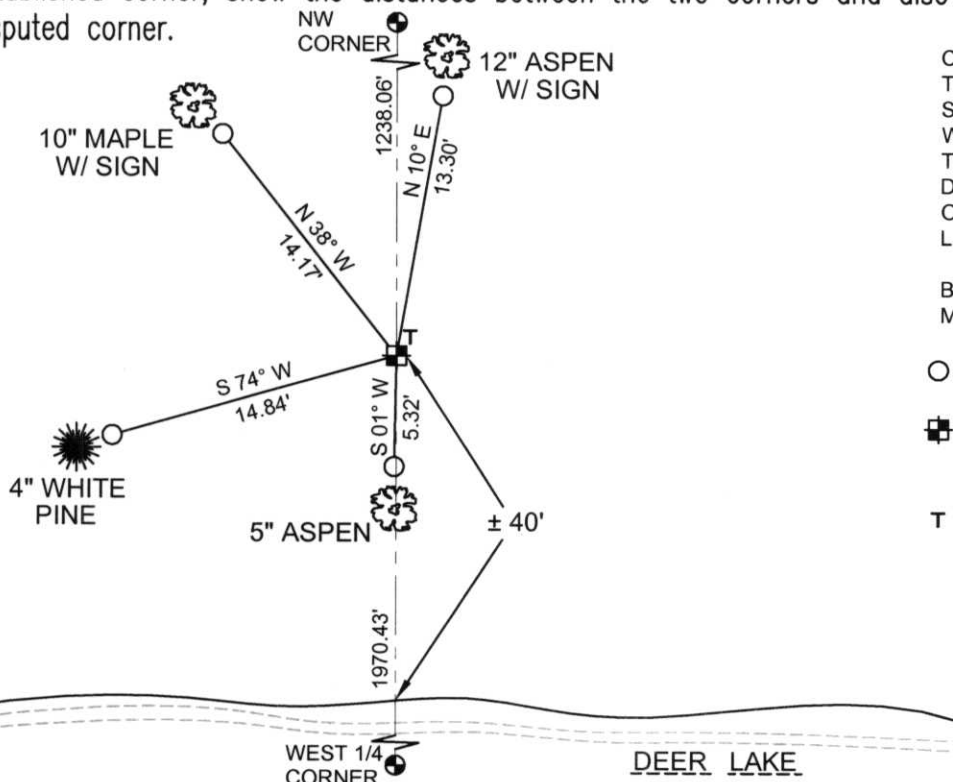
THE WEST 1/4 WAS ESTABLISHED USING A 1957 SURVEY FROM GENISOT, A 1996 SURVEY BY STUART FOLTZ, AND MONUMENTS FOUND FROM AN UNRECORDED SURVEY IN THE SOUTHWEST 1/4 OF THE SOUTHWEST 1/4 OF SECTION 1. ALL SURVEYS FIT WELL.

MEANDER CORNERS WERE SET ON THE NORTH AND SOUTH SIDE OF DEER LAKE TO PERPETUATE THE WEST 1/4 CORNER.

RECEIVED AT LINCOLN COUNTY
 COURTHOUSE THIS 21ST DAY
 OF December 20 01

Tony Dalman
 LAND INFORMATION OFFICE

(c)(d)(e) Plan view of corner with ties to at least 4 witness monuments. If in disagreement with previously established corner, show the distances between the two corners and also indicate the ties to the disputed corner.



COORDINATES ARE REFERENCED TO THE LINCOLN COUNTY COORDINATE SYSTEM AS DEVELOPED BY THE WISCONSIN DEPARTMENT OF TRANSPORTATION AND WERE DETERMINED BY GPS OBSERVATIONS ON CONTROL POINTS AS SUPPLIED BY LINCOLN COUNTY.

BEARINGS ARE REFERENCED TO MAGNETIC NORTH.

○ - SET 3/4" x 30" REBAR W/ ALUM CAP 1' FROM BEARING TREE

⊕ - SOUTH MEANDER CORNER OF THE NW 1/4 CORNER FOUND 2" IRON PIPE

T - SET VINAL "T" MARKER POST

NORTH

NOT TO SCALE

(i) I, Thomas A. Radenz, RLS certify that the corner location on this record was determined by me or under my direction and control and that this U.S. Public Land Survey Monument Record is correct and complete to the best of my knowledge and belief.

Thomas A. Radenz
 Signature _____ Date 12/21/01



Index No. AB-21