

# U.S. PUBLIC LAND SURVEY MONUMENT RECORD

NOTE: This form is intended and designed to fulfill all requirements of Wisconsin Administrative Code, Chapter A-E 7.08 U.S. Public Land Survey Monument Record. An additional sheet may be added if necessary to conform with said requirements.

**CORNER LOCATION:**

North Quarter Corner of Section 11  
Township 35 North, Range 6 East of the 4th P.M.  
Town of Bradley, Lincoln County, Wisconsin

**INDEX NUMBER:**

E-19

**LINCOLN COUNTY COORDINATES:**

(NAD83/2011)  
N: 253,545.927  
E: 388,739.483

6	5	4	3	2	1
7	8	9	10	11	12
18	17	16	15	14	13
19	20	21	22	23	24
30	29	28	27	26	25
31	32	33	34	35	36

T35N - R6E

**HISTORY OF ORIGINAL CORNER:**

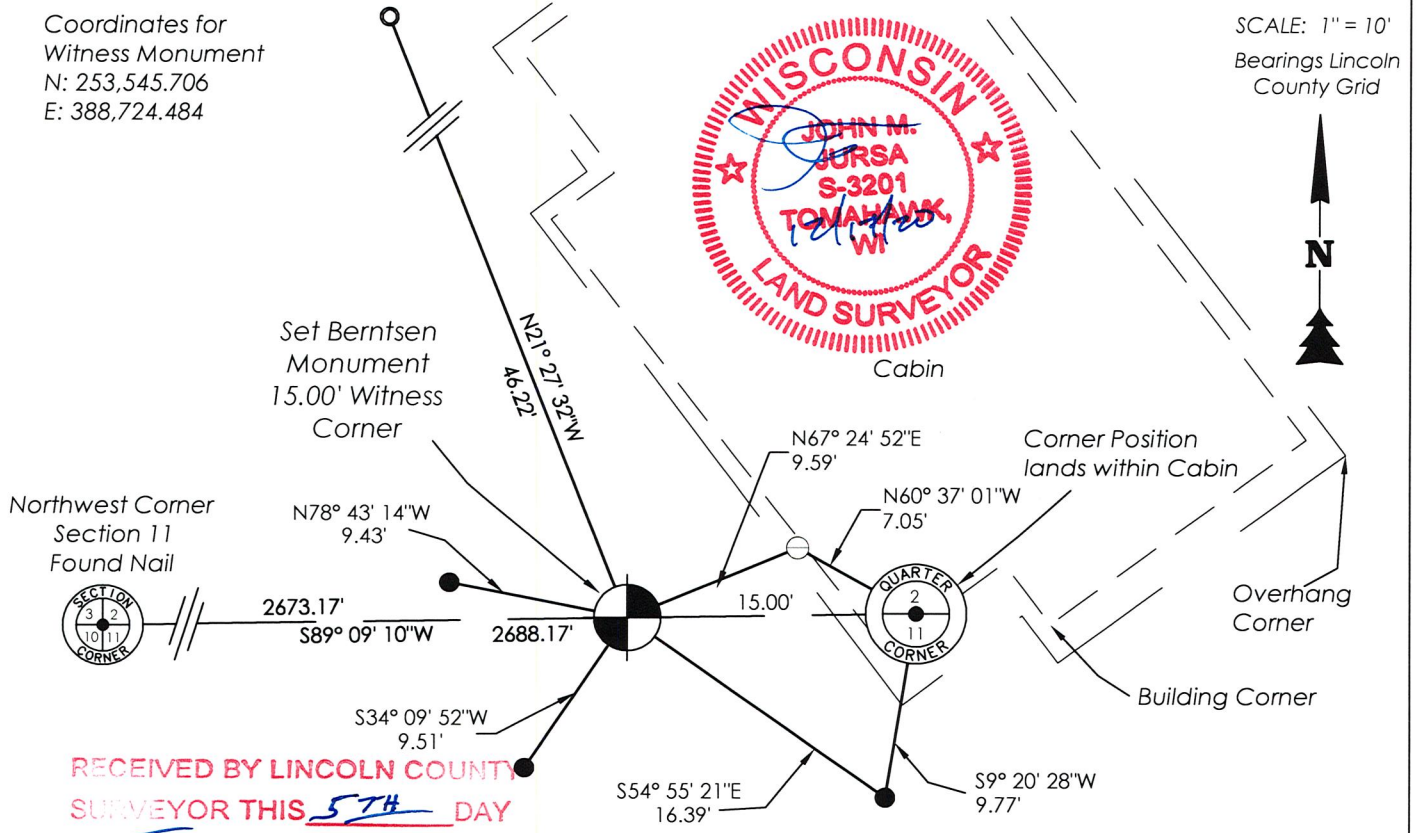
ORIGINAL SURVEYOR: Alfred Millard  
DATE OF SURVEY: October 1860 - July 1861  
ORIGINAL ACCESSORIES: 15" Yellow Pine, N36°W, 22 lks  
16" Yellow Pine, S85°E, 50 lks

**DESCRIPTION OF MONUMENT FOUND AT THIS CORNER AND IF IT WAS ACCEPTED, STATE ALL EVIDENCE (MATERIAL, TESTIMONIAL, OCCUPATIONAL, PLATS, RECORDS, OTHER MONUMENTS) USED AS A BASIS FOR ACCEPTING. IF NOT ACCEPTED OR IF NOTHING WAS FOUND, STATE EVIDENCE USED AS BASIS FOR ESTABLISHING LOCATION. IF RE-ESTABLISHED THROUGH LOST CORNER PROPORTIONATE METHODS, INDICATE ALL MONUMENTS, DISTANCES AND DIRECTIONS USED TO ESTABLISH. INDICATE TYPE OF MONUMENT AND SIGN POST FOUND OR SET.**

12/18/2001 - Thomas A. Radenz found a 2" Iron Pipe with Brass Cap 0.5' West of southeast building corner. He found monument fit distance to Lester Schmit's plat of survey and set ties to perpetuate corner location.

12/15/2020 - Visited corner location and found the 2" Iron Pipe matching the description above, however bearings and distances to existing ties did not match previous tiesheet. After speaking with a maintenance worker at the resort where corner lands, I learned that the pipe had been moved at some point by persons unknown. After calculating the position based upon existing ties, I found that corner landed within cabin. That position also corresponded with record bearings and distances from several plats of Section 2 & 11. I set a Berntsen Monument 15.00' to the west along the north line of Section 11 as a Witness Corner stamped "WC 15'" and set a white channel post 0.8' North of Monument. I used existing ties and set one additional tie as shown below.

**PLAN VIEW OF CORNER WITH TIES TO AT LEAST 4 WITNESS MONUMENTS. IF IN DISAGREEMENT WITH PREVIOUSLY ESTABLISHED CORNER, SHOW THE DISTANCES BETWEEN THE TWO CORNERS AND ALSO INDICATE THE TIES TO THE DISPUTED.**



RECEIVED BY LINCOLN COUNTY SURVEYOR THIS 5TH DAY OF January 20 21  
*Tom Dahl*  
COUNTY SURVEYOR

I, John M. Jursa, Professional Land Surveyor No. S-3201, hereby certify that the corner location on this record was determined by me or under my direction and control and that this U.S. Public Land Survey Monument Record is correct and complete to the best of my knowledge and belief.

*John M. Jursa*  
John M. Jursa, PLS No. S-3201  
STEIGERWALD LAND SURVEYING, LLC

**LEGEND**

- = 7/8" Rebar with 2.0" Aluminum Cap Found
  - = 7/8" Rebar with 2.0" Aluminum Cap Set
  - ⊖ = 2.0" Iron Pipe with 2.0" Brass Cap Found
- Stamped "1/4 Sec 2 Sec 11"

E-19

# U.S. PUBLIC LAND SURVEY MONUMENT RECORD

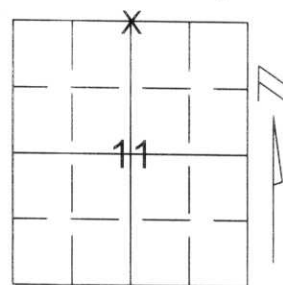
Note: This form is intended and designed to fulfill all requirements of Wisconsin Administrative Code, Chapter A-E 5.02, U.S. Public Land Survey Monument Record (3)(a)(b)(c)(d)(e)(f)(g)(h)(i). An additional sheet may be added if necessary to conform with said requirements.

(a) Corner location: Township 35 North

Range 6 East

Town/City/Village BRADLEY

County LINCOLN



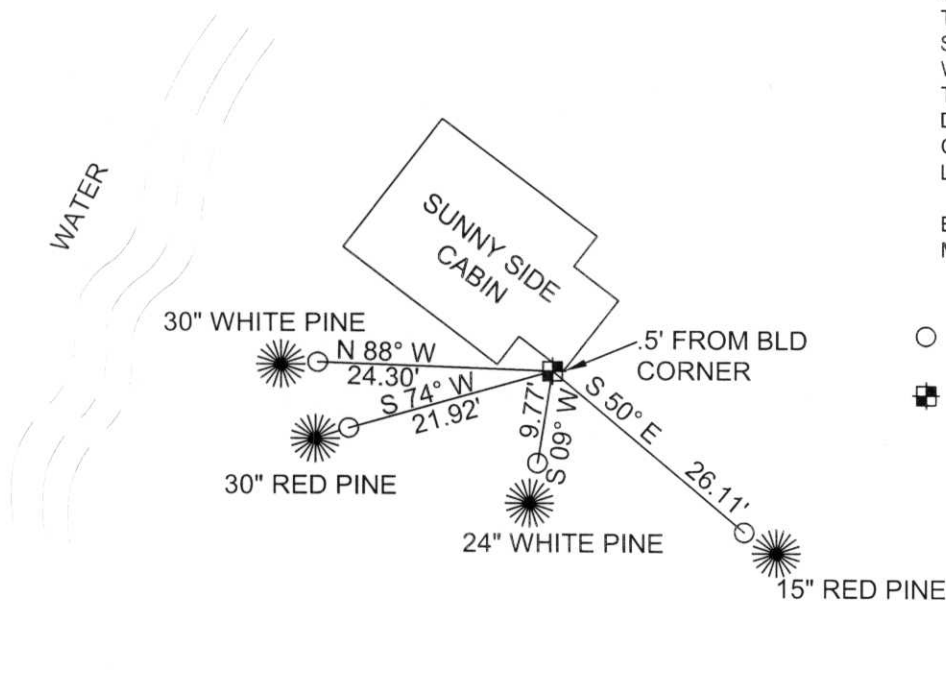
Section 11

(b)(f)(g)(h) Description of monument found at this corner and if it was accepted, state all evidence (material, testimonial, occupational, plats, records, other monuments) used as a basis for accepting. If not accepted or if nothing was found, state evidence used as basis for establishing location. If reestablished through lost corner proportionate methods, indicate all monuments, distances and directions used to establish.

WE FOUND A 2" IRON PIPE, WITH BRASS CAP SCRIBED 1/4 SECTION 2 & 11, .5 FEET WEST OF THE SOUTHEAST BUILDING CORNER OF "SUNNY SIDE CABIN". THE MONUMENT FITS THE DISTANCE TO THE NORTHEAST AND NORTHWEST SECTION CORNERS PER LESTER SCHMIDT'S PLAT OF SURVEY. TIED OUT IRON PIPE TO PERPETUATE CORNER LOCATION.

RECEIVED AT LINCOLN COUNTY  
COURTHOUSE THIS 21<sup>ST</sup> DAY  
OF December 20 01  
*Tony Dahn*  
LAND INFORMATION OFFICE

(c)(d)(e) Plan view of corner with ties to at least 4 witness monuments. If in disagreement with previously established corner, show the distances between the two corners and also indicate the ties to the disputed corner.



COORDINATES ARE REFERENCED TO THE LINCOLN COUNTY COORDINATE SYSTEM AS DEVELOPED BY THE WISCONSIN DEPARTMENT OF TRANSPORTATION AND WERE DETERMINED BY GPS OBSERVATIONS ON CONTROL POINTS AS SUPPLIED BY LINCOLN COUNTY.

BEARINGS ARE REFERENCED TO MAGNETIC NORTH.

○ - SET 3/4" x 30" REBAR W/ ALUM CAP 1' FROM BEARING TREE

■ - NORTH 1/4 FOUND 2" IRON PIPE WITH BRASS CAP

NORTH  
↑  
NOT TO SCALE

(i) I, Thomas A. Radenz, RLS certify that the corner location on this record was determined by me or under my direction and control and that this U.S. Public Land Survey Monument Record is correct and complete to the best of my knowledge and belief.

*Thomas A. Radenz*  
Signature \_\_\_\_\_ Date 12/18/01



Index No. E-19