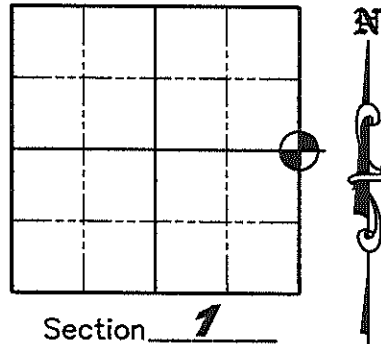


U.S. PUBLIC LAND SURVEY MONUMENT RECORD

NOTE: This form is intended and designed to fulfill all requirements of Wisconsin Administrative Code, Chapter A-E 7 .08 U.S. Public Land Survey Monument Record (3)(a)(b)(c)(d)(e)(f)(g)(h)(i). An additional sheet may be added if necessary to conform with said requirements.

(a) Corner location: Township 35 North
 Range 6 East
 Town of Bradley
 County of Lincoln



(b)(f)(g)(h) Description of monument found at this corner and if it was accepted, state all evidence (material, testimonial, occupation, plats, records, other monuments) used as a basis for accepting. If not accepted or if nothing was found, state evidence used as a basis for establishing location. If reestablished through lost corner proportionate methods, indicate all monuments, distances and directions used to establish. Indicate type of monument found or set and sign post.

August 27, 1860 - Alfred Millard set wood Quarter section post with bearing trees: Tamarac 6° N58°W, 10 links, Tamarac 10° N52°E, 23 links

July 1975 - John Fischer shows a 2" iron pipe in place at corner on Map No. M29B on file at the Lincoln County Surveyor's office.

August, 1978 - "Field Survey Notes - Preservation of Landmarks for WisDOT U.S.H. 51 Freeway" by Lester J. Schmit - S#1192 notes: "Found 3" iron pipe and 5" squared wood post in wet open swamp. The 3" iron pipe is N09°55'10"W a distance of 6.90' from a point by single proportionate measurement between the NE and SE corners of Section 1, using the original Gov't. notes. James Marsh's** original survey of this range line has been found to be quite accurate. So I have accepted the 3" iron pipe as the true corner location. Made new B.T.'s: PK nail in 18" Tamarack - N36°W, 671.37'; PK nail in 14" White Birch - N29°W, 598.02'. **NOTE: the reference to James Marsh as the original surveyor is incorrect.**"

November 7, 1983 - Keith Vreeland shows a 2-1/2" iron pipe and 5" sq. scribed wood post in place at corner on Map Nos. M344A & M375A on file at the Lincoln County Surveyor's office

September, 2009 - Matthew E. Hoglund found a 3" by 6" iron pipe up 4' at corner with a 5" square scribed wood post lying down next to it. Based on rust stains on pipe it appears to have been worked out of the swampy ground by frost action. Pounded pipe down and left up 6" - set 5' long Bermtsen aluminum Lincoln County swamp rod with barbed tip inside of 3" iron pipe with cap even with top of pipe. Set white plastic "T" post on West side of monument facing East and took witnesses as shown below.

(c)(d)(e) Plan view of corner with ties to at least 4 witness monuments. If in disagreement with previously established corner, show the distances between the two corners and also indicate the ties to the disputed corner.

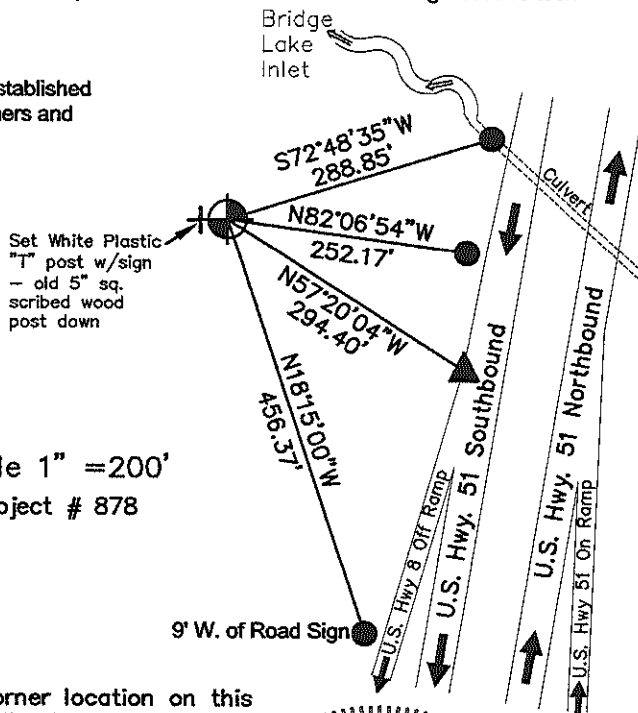


Basis of Bearings: Magnetic bearing taken with a hand compass to most Southerly tie shown - N18°15'00"W.

Legend

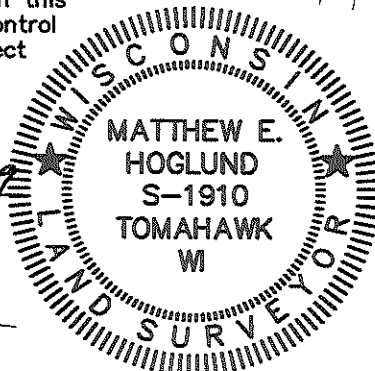
- ▲ Found PK Nail in Aerial Target "T143" - 2' E. of W. Edge of Conc. Pavement
- Set 7/8" by 30" Iron Rod with Aluminum Cap 20' W. of edge of pvmt.
- ⊙ Set 5' Bermtsen Swamp Monument inside of Found 3" by 6' Iron Pipe

Scale 1" = 200'
 Project # 878



(i) I, Matthew E. Hoglund, certify that the corner location on this record was determined by me under my direction and control and that this U.S. Public Land Survey Monument is correct and complete to the best of my knowledge and belief.

Signature [Handwritten Signature]
 RECEIVED BY LINCOLN COUNTY SURVEYOR
 SURVEYOR THIS 28th Date 10/27/09
 OF October 20 09
[Handwritten Signature]
 COUNTY SURVEYOR



FIELD SURVEY NOTES

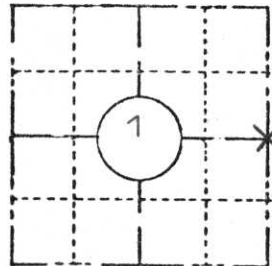
State of Wisconsin / Department of Transportation

PRESERVATION OF LANDMARKS

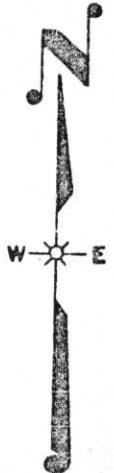
(Pursuant to Section 59.635(7) Wisconsin Statutes

E-D-707-69

COUNTY Lincoln		
TOWN Bradley		
HIGHWAY U.S.H. 51 Freeway		
SECTION 1	TOWNSHIP T 35 N	RANGE R 6 E
TYPE OF LANDMARK East 1/4 corner		



LOCATION SKETCH
(Location of landmark indicated by "x")



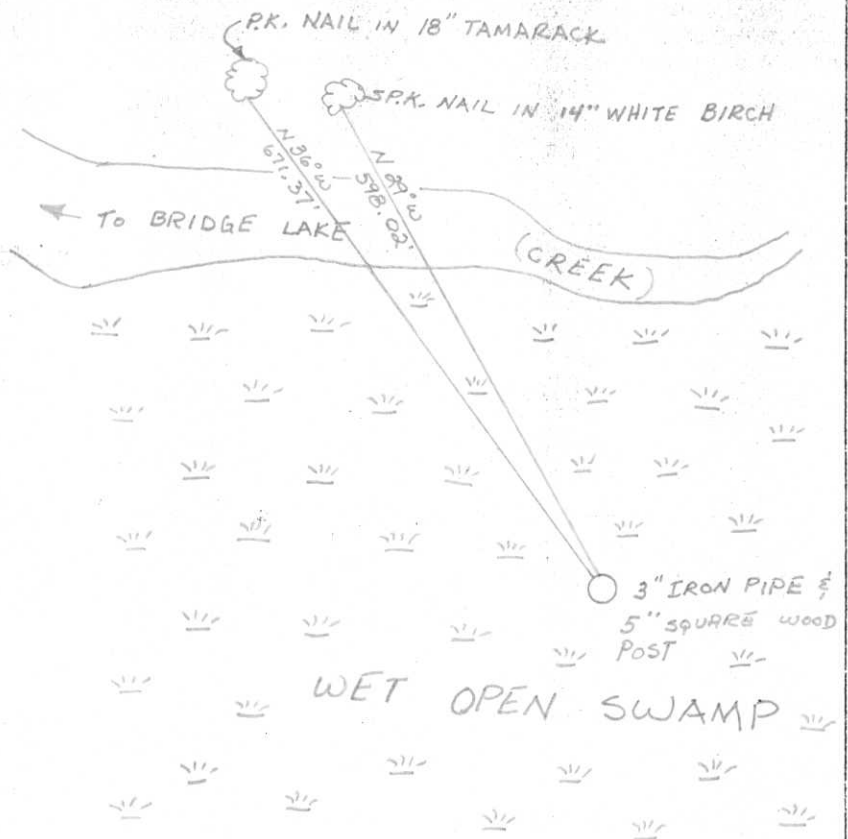
This space for copy of field notes or ties to the above described landmarks

Found 3" iron pipe and 5" squared wood post in wet open swamp. The 3" iron pipe is N 09°55'10" W a distance of 6.90' from a point by single proportionate measurement between NE & SE cor. of Sec. 1, using the original Gov't. notes.

James Marsh's original survey of this range line has been found to be quite accurate. So I have accepted the 3" iron pipe as the true corner location.

Made new B.T.'s.

The wetness of this swamp which surrounds the corner varies with the water level of Lake Nokomis and Bridge Lake.



FILED UNDER PROJECT U.S.H. 51 Freeway Number I.D. 1173-3-10			COUNTY CLERK'S OFFICE	
DISTRICT OFFICE NUMBER 7	CITY Tomahawk	COUNTY Lincoln	COUNTY OF Lincoln WISCONSIN } 55	DATE RECEIVED FOR RECORD 8/11/78
LOCATED OR ESTABLISHED BY Timberland Surveyors, Inc.			DATE COPY SENT TO COUNTY SURVEYOR	
NAME Lester J. Schmit			SIGNATURE OF COUNTY CLERK Ken Olsenberg	
TITLE Land Surveyor S1192 DATE Aug 1978				

PRESERVATION OF LANDMARKS

PAGE _____



RECEIVED AT LINCOLN COUNTY
COURTHOUSE THIS 14 DAY
OF August 1978
Pat Riecke
TAX DESCRIPTION OFFICE

C-25