





13

1/4 1/2 T35N, RGE

DHDT (Linc. Co)

OCT. 1972 F.C.D.Y.

WINAT, SPRISTER

Searched for Griffin's 1 1/2" I.P. on N/E TOWNED.  
Apparently graded out. Reset corner from Griffin's Ties.

NOV. 1972 25° C.D.Y.

WINAT, SPRISTER

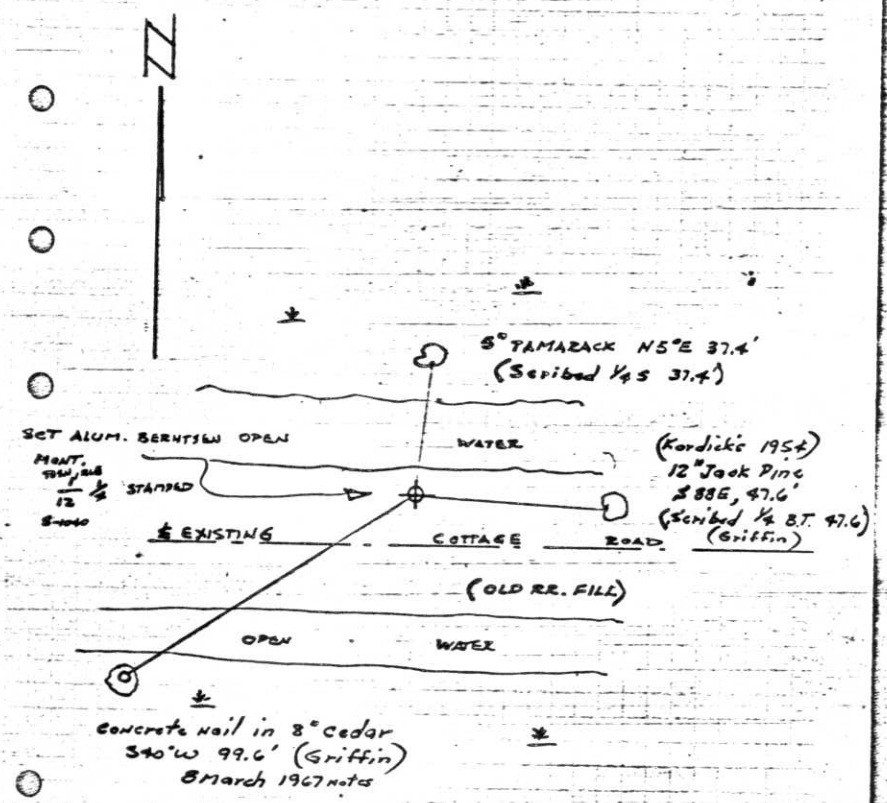
Set Benntzen Alum. monument & R.T. STAKE.

17 Nov. 1972

R. Muller, Sprister

STAMPED CAP.

98.



Robert Winat, Northwoods Surveyor  
Copies of work done for Division  
of Hwys. Received Feb. 1973

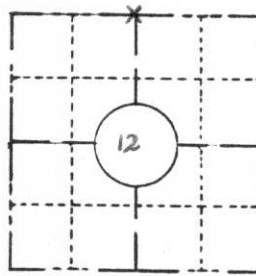
FIELD SURVEY NOTES

**PRESERVATION OF LANDMARKS**

(Pursuant to Section 59.635(7) Wisconsin Statutes)

Wisconsin Department of Transportation  
E-D-707-67

COUNTY <i>LINCOLN</i>		
TOWN <i>BRADLEY</i>		
HIGHWAY <i>US H 51 FREEWAY</i>		
SECTION <i>12</i>	TOWNSHIP <i>T35N</i>	RANGE <i>R6E</i>
TYPE OF LANDMARK <i>N. 1/4 Corner</i>		



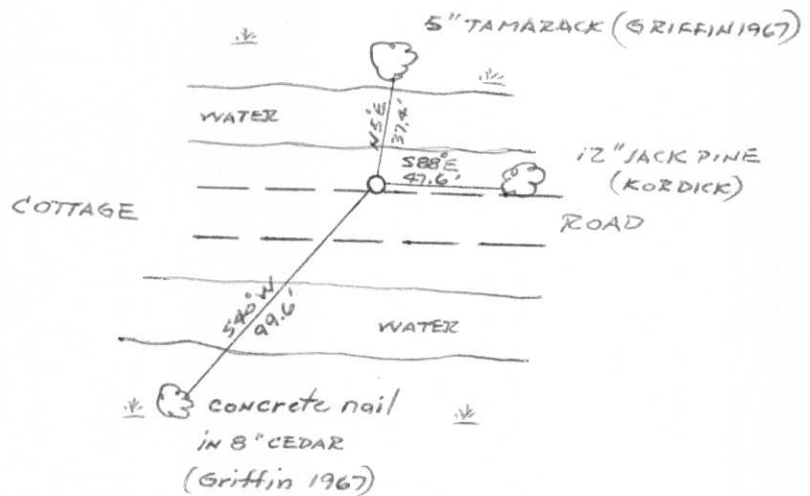
**LOCATION SKETCH**  
(Location of landmark indicated by "x")



This space for copy of field notes or ties to the above described landmarks

No evidence of original corner or accessories set by Alfred Millard in August 1860. Area of subsidence, due to road fill. No evidence of Kordick or Griffin's iron pipe as road has been regraded to greater width.

Set Berntsen aluminum monument from James G. Griffin's ties of March 1967.



FILED UNDER PROJECT NUMBER <i>U.S.H. 51 FREEWAY</i>		COUNTY CLERK'S OFFICE	
NUMBER <i>ID. 1173-0-03</i>		COUNTY OF <i>Lincoln</i>	WISCONSIN } SS
SHC DISTRICT OFFICE NUMBER <i>7</i>	CITY	DATE RECEIVED FOR RECORD <i>1/24/73</i>	DATE COPY SENT TO COUNTY SURVEYOR
LOCATED OR ESTABLISHED BY NORTHWOODS SURVEYORS, INC.		SIGNATURE OF COUNTY CLERK <i>Ken Oldenburg</i>	
NAME <i>Robert H. Hinnat</i>			
TITLE <i>Land Surveyor S-1040</i> DATE <i>Dec 1972</i>			

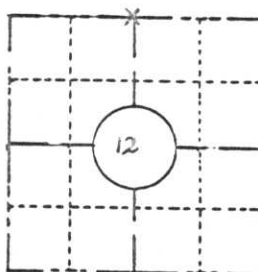
E-23



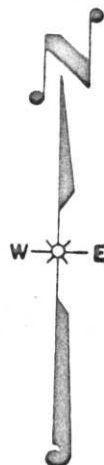
FIELD SURVEY NOTES  
PRESERVATION OF LANDMARKS  
(Pursuant to Section 59.635(7) Wisconsin Statutes)

Wisconsin Department of Transportation  
E-D-707-87

COUNTY <i>LINCOLN</i>		
TOWN <i>BRADLEY</i>		
HIGHWAY <i>US H 51 FREEWAY</i>		
SECTION <i>12</i>	TOWNSHIP <i>T35N</i>	RANGE <i>R6E</i>
TYPE OF LANDMARK <i>N. 1/4 corner</i>		



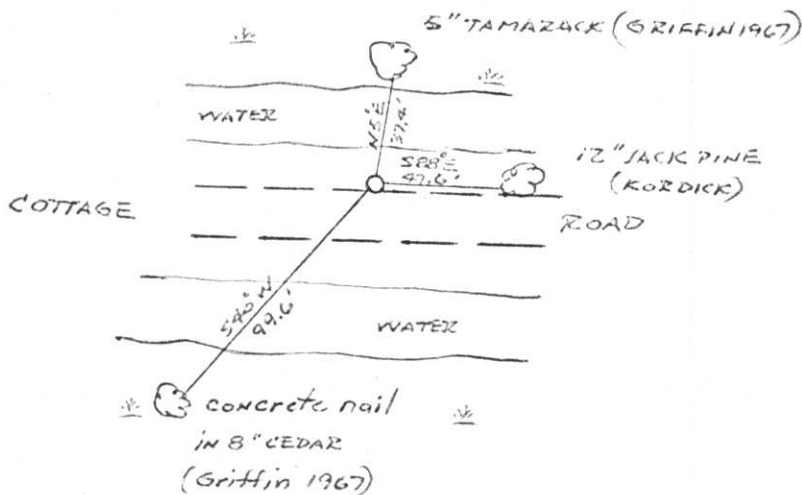
LOCATION SKETCH  
(Location of landmark indicated by "x")



This space for copy of field notes or ties to the above described landmarks

No evidence of original corner or accessories set by Alfred Millard in August 1860. Area of subsidence, due to road fill. No evidence of Kordick or Griffin's iron pipe as road has been regraded to greater width.

Set Berntsen aluminum monument from James G. Griffin's ties of March 1967.



FILED UNDER PROJECT NUMBER <i>U.S.H. 51 FREEWAY</i> <i>I.D. 1173-0-03</i>	
SHC DISTRICT OFFICE NUMBER <i>7</i>	CITY <i>Lincoln</i>
COUNTY <i>Lincoln</i>	
LOCATED OR ESTABLISHED BY <i>NORTHWOODS SURVEYORS, INC.</i>	
NAME <i>Robert H. Thiel</i>	
TITLE <i>Land Surveyor S-1040</i> DATE <i>Dec. 1972</i>	

COUNTY CLERK'S OFFICE COUNTY OF <i>Lincoln</i> WISCONSIN } SS	
DATE RECEIVED FOR RECORD <i>1/24/73</i>	DATE COPY SENT TO COUNTY SURVEYOR <i>✓</i>
SIGNATURE OF COUNTY CLERK <i>Ken Oldenborg</i>	