

U.S. PUBLIC LAND SURVEY MONUMENT RECORD

NOTE: This form is intended and designed to fulfill all requirements of Wisconsin Administrative Code, Chapter A-E 7.08 U.S. Public Land Survey Monument Record. An additional sheet may be added if necessary to conform with said requirements.

CORNER LOCATION

West Quarter Corner of Section 31
Township 35 North, Range 6 East of the 4th P.M.
Town of Bradley, Lincoln County, Wisconsin

HISTORY OF ORIGINAL CORNER ESTABLISHMENT

ORIGINAL SURVEYOR: Alfred Miller
DATE OF SURVEY: 1860
ORIGINAL ACCESSORIES: White Pine 12 S 25° E 13 lks,
White Pine 16 N 80° W 19 lks.

6	5	4	3	2	1
7	8	9	10	11	12
18	17	16	15	14	13
19	20	21	22	23	24
30	29	28	27	26	25
● 31	32	33	34	35	36

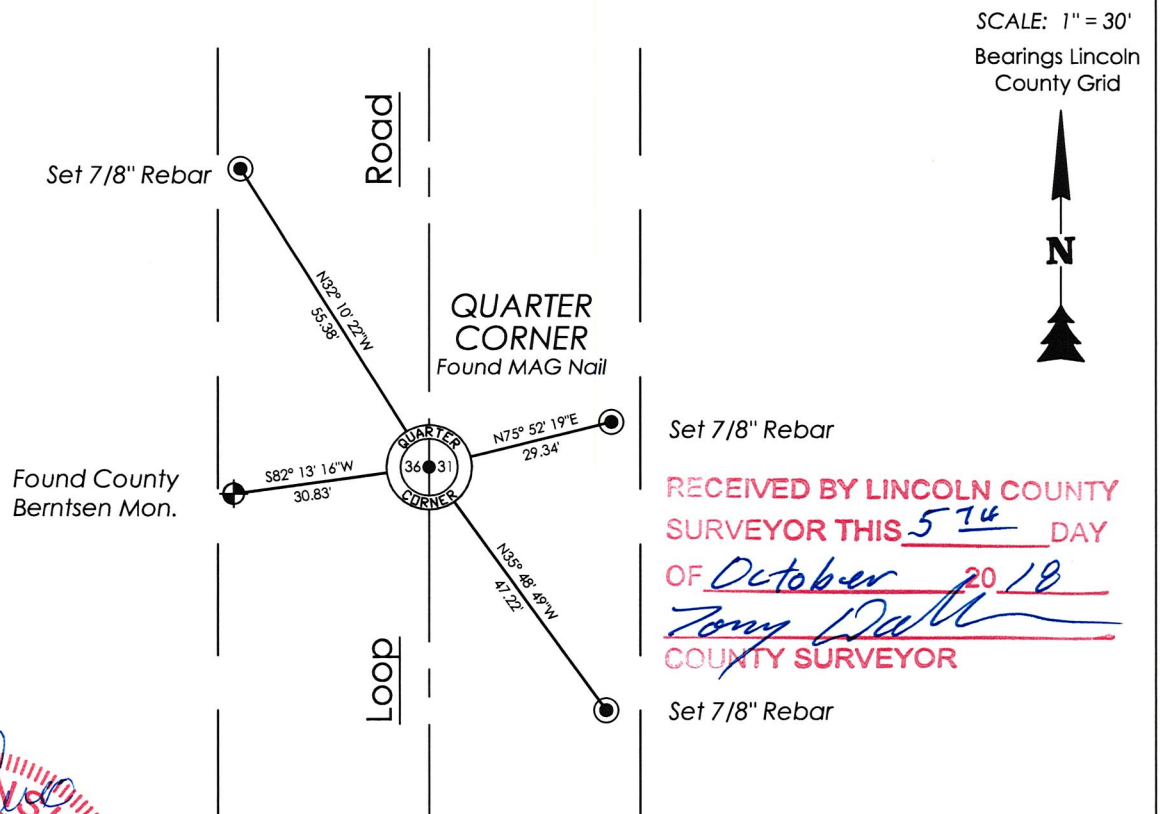
T35N - R6E

DESCRIPTION OF MONUMENT FOUND AT THIS CORNER AND IF IT WAS ACCEPTED, STATE ALL EVIDENCE (MATERIAL, TESTIMONIAL, OCCUPATIONAL, PLATS, RECORDS, OTHER MONUMENTS) USED AS A BASIS FOR ACCEPTING. IF NOT ACCEPTED OR IF NOTHING WAS FOUND, STATE EVIDENCE USED AS BASIS FOR ESTABLISHING LOCATION. IF RE-ESTABLISHED THROUGH LOST CORNER PROPORTIONATE METHODS, INDICATE ALL MONUMENTS, DISTANCES AND DIRECTIONS USED TO ESTABLISH. INDICATE TYPE OF MONUMENT AND SIGN POST FOUND OR SET.

1976 - Lester J. Schmidt found a nail in Loop Road with a witness monument, a snow fence stake S 89° 32' 00" E 19.56' and a witness monument, a 1" iron pipe N 88° 36' 19" W, 22.18'. Set a Berntsen Monument 30" long 2" below surface of Loop Road; P.K. Nail in 18" Oak N 81° 09' 51" E 53087'; P.K. Nail in 11" White Pine N 77° 08' 12" W 33.48'.

9/17/2018 - Visited corner location and found a Mag Nail +/- 10.5' West of the east edge of asphalt of Loop Road. The MAG nail matched the coordinate location as published by Tom Radenz, REI, on section summary. Accepted as at corner location. Also found a 2" Aluminum Berntsen Monument marked as Lincoln County Witness Corner S 82° 13' W 30.83'. Set 7/8" rebars as additional accessories to the corner as measured and shown below.

PLAN VIEW OF CORNER WITH TIES TO AT LEAST 4 WITNESS MONUMENTS. IF IN DISAGREEMENT WITH PREVIOUSLY ESTABLISHED CORNER, SHOW THE DISTANCES BETWEEN THE TWO CORNERS AND ALSO INDICATE THE TIES TO THE DISPUTED.



RECEIVED BY LINCOLN COUNTY SURVEYOR THIS 5th DAY OF October 20 18
Tom Radenz
COUNTY SURVEYOR



I, Emily K. Pierce, Professional Land Surveyor No. S-2728, hereby certify that the corner location on this record was determined by me or under my direction and control and that this U.S. Public Land Survey Monument Record is correct and complete to the best of my knowledge and belief.

Emily K. Pierce
Emily K. Pierce, PLS No. S-2728
STEIGERWALDT LAND SURVEYING, LLC

1-M

CERTIFIED LAND CORNER RESTORATION

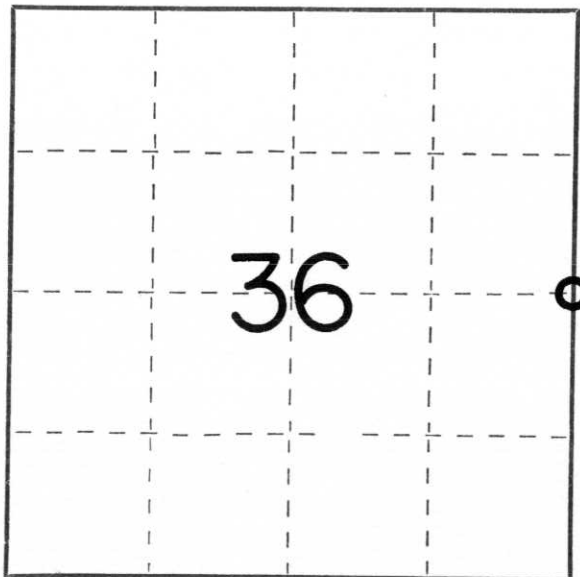
Index No. W-25

State of Wisconsin }
County of Lincoln } ss.

I Lester J. Schmit, do hereby certify that on the 1st day of October, 1976, I found evidence of the East 1/4 corner of Section 36 Township 35, North, Range 5 East, Fourth, Principal Meridian, as described hereon; and that from this evidence I established a new monument and accessories as described hereon to perpetuate the original location of this corner.

Resident witnesses:

.....
.....
.....



○ = Corner monument restored.

History of original corner establishment:

Surveyor: Alfred Millard
Date: 18 August 1860
Monumentation: Wood Post
Witnesses: White Pine 12; S 25° E, 13 links
White Pine 16; N 80° W, 19 links

Description of corner evidence found: I found a nail in Loop Road with a witness monument, a snow fence stake S 89°32'00" E, 19.56' and a witness monument, a 1" iron pipe N 88°36'19" W, 22.18'.

Description of monument and accessories I established to perpetuate the original location of this corner.

Berntsen Monument - 30" (set 2" below the surface of Loop Road)

P.K. Nail in 18" Oak; N 81°09'51" E; 53.87'
P.K. Nail in 11" White Pine; N 77°08'12" W; 33.48'

Dated at Tomahawk, Wis., this 6th day of September, 1977.

Signature Lester J. Schmit Title Land Surveyor Registration No. S-1192
(County Surveyor, Registered Land Surveyor, or other duly authorized official)

Office of Register of Deeds, County of _____, I hereby certify that the within instrument was filed in this office for record on the _____ day of _____, 19____ at _____ o'clock _____ M.

.....
(Register of Deeds)

By _____ Deputy