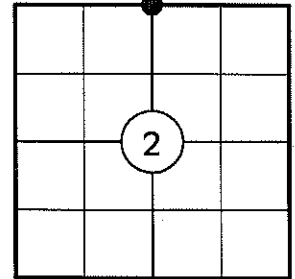


U.S. PUBLIC LAND SURVEY MONUMENT RECORD

NOTE: THIS FORM IS INTENDED AND DESIGNED TO FULFILL ALL REQUIREMENTS OF WISCONSIN ADMINISTRATIVE CODE CHAPTER A-E 7.08 U.S. PUBLIC LAND SURVEY MONUMENT RECORD (3) (a)(b)(c)(d)(e)(f)(g)(h)(i). AN ADDITIONAL SHEET MAY BE ADDED IF NECESSARY TO CONFIRM WITH SAID REQUIREMENTS.

(a) CORNER LOCATION:

NORTH 1/4 CORNER OF SECTION 2
 TOWNSHIP 34 NORTH
 RANGE 5 EAST
 TOWN OF TOMAHAWK
 COUNTY OF LINCOLN



(b) HISTORY OF ORIGINAL CORNER:

ORIGINAL SURVEYOR: J.M. MARSH
 DATE OF SURVEY: AUGUST, 1851

ORIGINAL BEARING TREES: 8" W. PINE - S80°E, 24 LKS
 12" TAMARACK - S50°W, 34 LKS
 12" W. PINE - N40°W, 9 LKS
 9" W. PINE - N50°E, 15 LKS

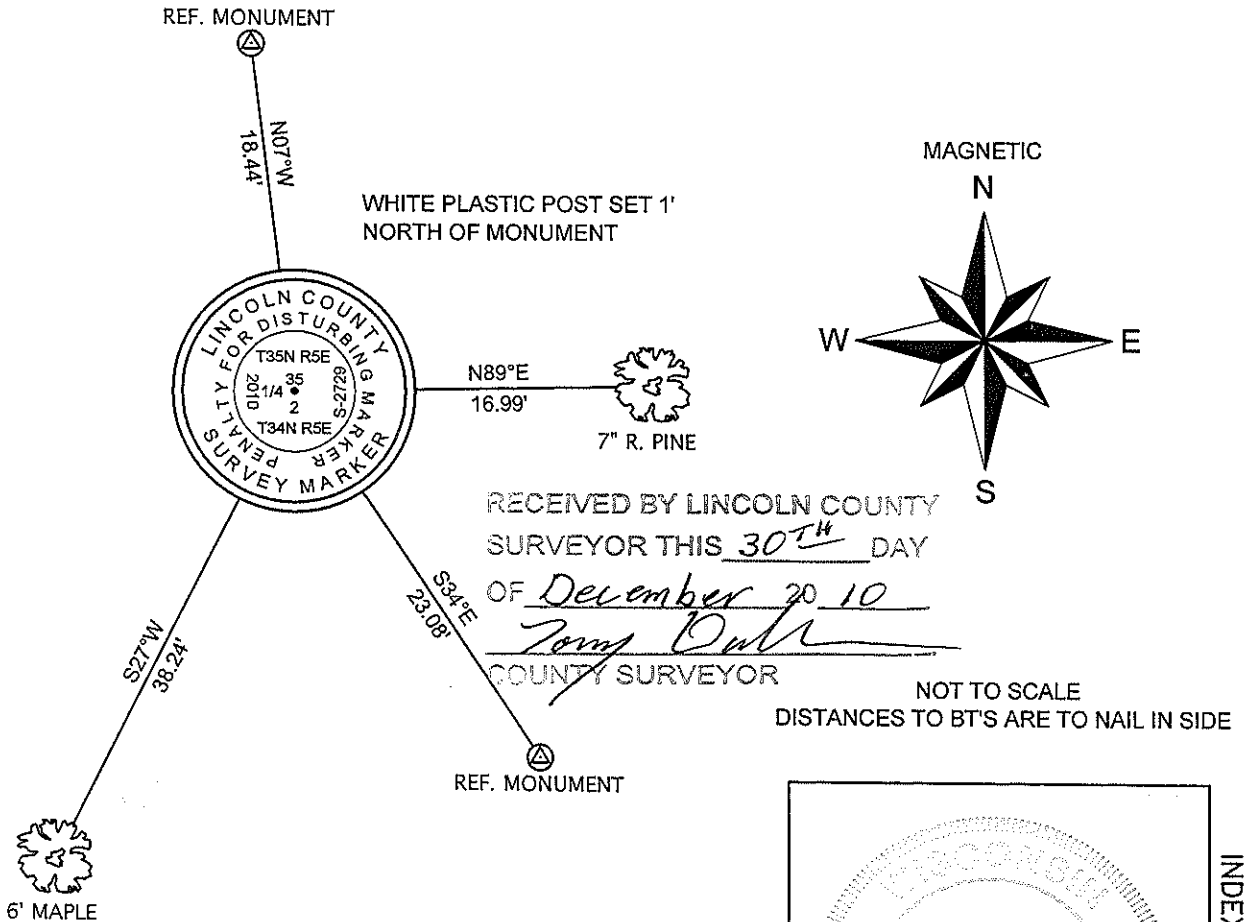
(f)(g)(h) DESCRIPTION OF MONUMENT FOUND AT THIS CORNER AND IF IT WAS ACCEPTED STATE ALL EVIDENCE (MATERIAL, TESTIMONIAL, OCCUPATIONAL, PLATS, RECORDS, OTHER MONUMENTS) USED AS A BASIS FOR ESTABLISHING LOCATION. IF REESTABLISHING THROUGH LOST CORNER PROPORTIONATE METHODS, INDICATE ALL MONUMENTS, DISTANCES, AND DIRECTIONS USED TO ESTABLISH. INDICATE TYPE OF MONUMENT AND SIGN POST FOUND OR SET.

1851: J.M. MARSH SET THE ORIGINAL 1/4 SECTION POST.

1963: W.H. STUTH PREPARED A SKETCH SHOWING THE RESULTS OF A 1963 SURVEY BY OWENS-ILLINOIS IN WHICH THEY SET AN IRON PIPE AT THE 1/4 CORNER AND NOTED 2 BEARING TREES: 5" J.P. - S72°E, 48.0' AND A 5" W.B. - S87°W, 2.0'.

12/10/2010: I FOUND A 1-1/4" X 48" IRON PIPE, SCRIBED WOOD POST AND BOTH OWENS-ILLINOIS BEARING TREES. I REPLACED THE IRON PIPE WITH A LINCOLN COUNTY ALUMINUM MONUMENT, MADE TWO BEARING TREES AND SET TWO 3/4" DIA. CAPPED REBAR REFERENCE MONUMENTS AS SHOWN BELOW.

(c)(d)(e) PLAN VIEW OF CORNER WITH TIES TO AT LEAST FOUR WITNESSES. IF IN DISAGREEMENT WITH PREVIOUSLY ESTABLISHED CORNER, SHOW THE DISTANCES BETWEEN THE TWO CORNERS AND ALSO INDICATE THE TIE TO THE DISPUTED CORNER.

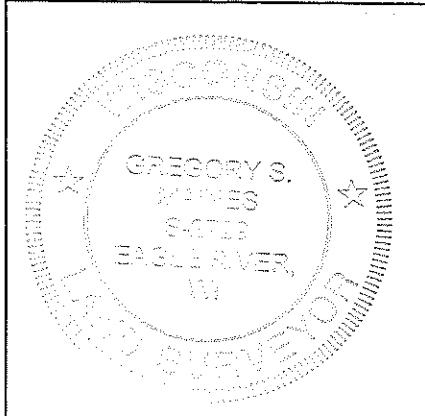


RECEIVED BY LINCOLN COUNTY SURVEYOR THIS 30TH DAY OF December 20 10
Gregory S. Maines
 COUNTY SURVEYOR

NOT TO SCALE
 DISTANCES TO BT'S ARE TO NAIL IN SIDE

I GREGORY S. MAINES, REGISTERED LAND SURVEYOR NO. 2729, HEREBY CERTIFY THAT THE CORNER LOCATION ON THIS RECORD WAS REFERENCED BY ME OR UNDER MY DIRECTION AND CONTROL AND THAT THIS U.S. PUBLIC LAND SURVEY MONUMENT RECORD IS COMPLETE TO THE BEST OF MY KNOWLEDGE AND BELIEF.

Gregory S. Maines 12/29/10
 SIGNATURE



INDEX NO. A-19

NORTH 1/4 CORNER OF SECTION 2, T34N, R05E

1 1/2" DIA. IRON PIPE FOUND



REPLACED WITH A LINCOLN COUNTY BERNTSEN MONUMENT



FACING NORTH



FACING SOUTH



FACING EAST



FACING WEST

