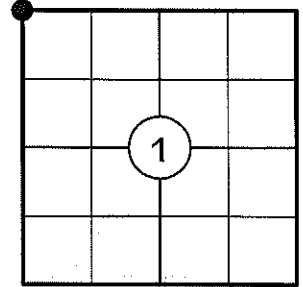


U.S. PUBLIC LAND SURVEY MONUMENT RECORD

NOTE: THIS FORM IS INTENDED AND DESIGNED TO FULFILL ALL REQUIREMENTS OF WISCONSIN ADMINISTRATIVE CODE CHAPTER A-E 7.08 U.S. PUBLIC LAND SURVEY MONUMENT RECORD (3) (a)(b)(c)(d)(e)(f)(g)(h)(i). AN ADDITIONAL SHEET MAY BE ADDED IF NECESSARY TO CONFIRM WITH SAID REQUIREMENTS.

(a) CORNER LOCATION:

NW CORNER OF SECTION 1
 TOWNSHIP 34 NORTH
 RANGE 5 EAST
 TOWN OF TOMAHAWK
 COUNTY OF LINCOLN



(b) HISTORY OF ORIGINAL CORNER:

ORIGINAL SURVEYOR: J.M. MARSH
 DATE OF SURVEY: AUGUST, 1851

ORIGINAL BEARING TREES: 11" SPRUCE - S55°E, 46 LKS
 10" SPRUCE - S50°W, 35 LKS
 12" TAMARACK - N68°W, 26 LKS
 14" TAMARACK - N44°E, 38 LKS

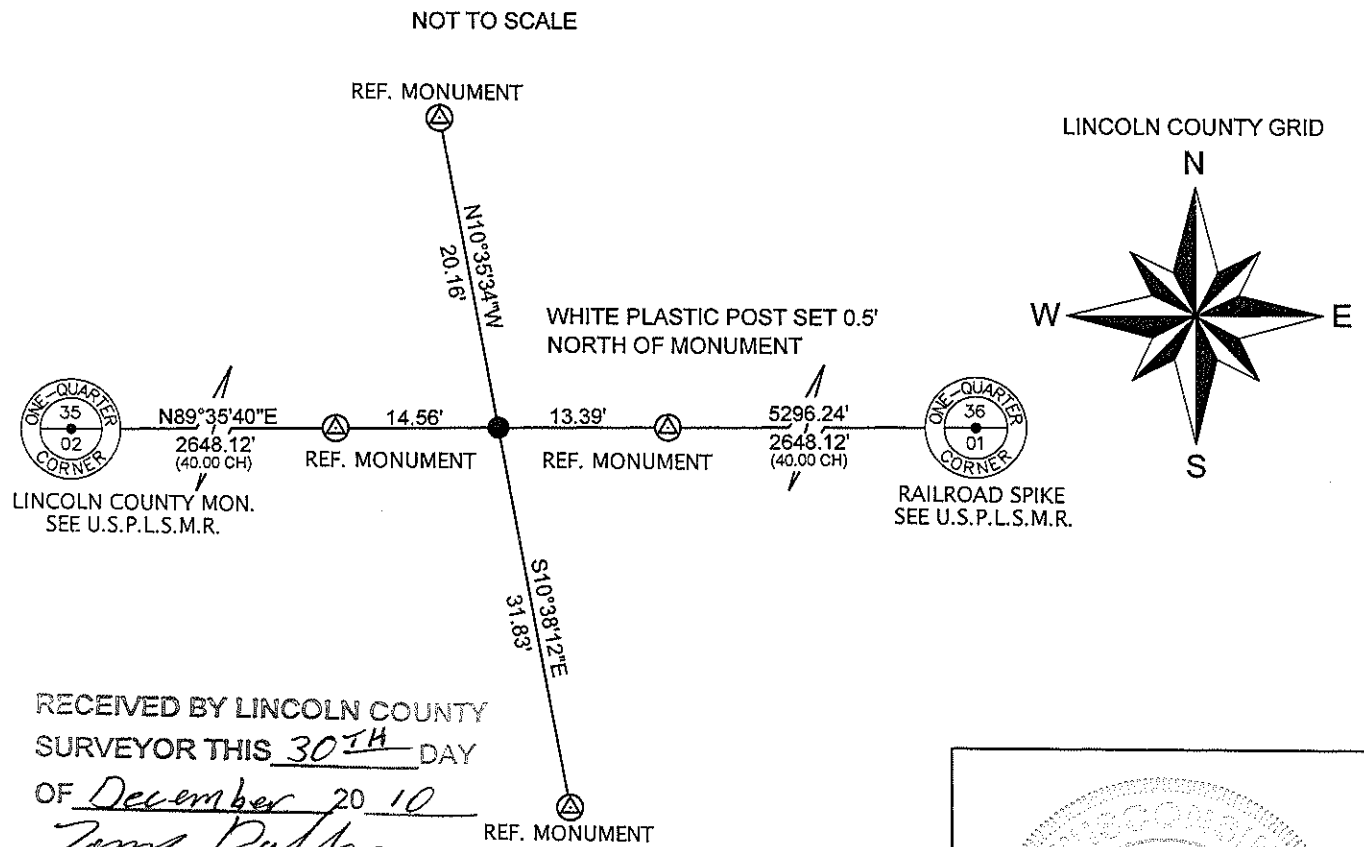
(f)(g)(h) DESCRIPTION OF MONUMENT FOUND AT THIS CORNER AND IF IT WAS ACCEPTED STATE ALL EVIDENCE (MATERIAL, TESTIMONIAL, OCCUPATIONAL, PLATS, RECORDS, OTHER MONUMENTS) USED AS A BASIS FOR ESTABLISHING LOCATION. IF REESTABLISHING THROUGH LOST CORNER PROPORTIONATE METHODS, INDICATE ALL MONUMENTS, DISTANCES, AND DIRECTIONS USED TO ESTABLISH. INDICATE TYPE OF MONUMENT AND SIGN POST FOUND OR SET.

1851: J.M. MARSH SET THE ORIGINAL SECTION POST.

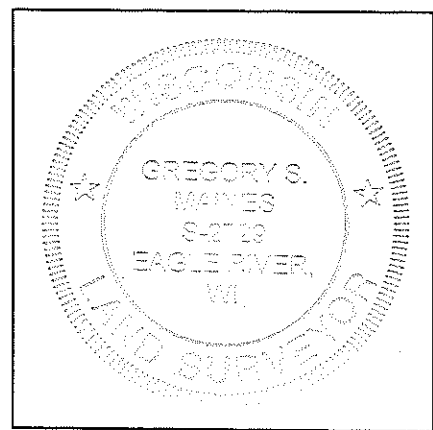
1963: W.H. STUTH PREPARED A SKETCH SHOWING THE RESULTS OF A 1963 SURVEY BY OWENS-ILLINOIS IN WHICH A CORNER BY OTHERS IS NOTED.

12/11/2010: I FOUND NO EVIDENCE OF THE ORIGINAL CORNER OR THE CORNER BY OTHERS SHOWN ON THE STUTH SKETCH. A NORTH-SOUTH BARBED WIRE FENCE, NOW DOWN LIES ±3' WEST OF THE PROPORTIONED LOCATION. THE ADJACENT LANDOWNER TO THE SOUTHEAST SAID THERE USED TO BE A WOOD POST IN A NORTH-SOUTH FENCE AT THE CORNER LOCATION, BUT IT HAS BEEN GONE FOR MANY YEARS. I SET RAILROAD SPIKE AT THE PROPORTIONED LOCATION DUE TO A LARGE BOULDER 10" BELOW GRADE AND SET FOUR 3/4" DIA. CAPPED REBAR REFERENCE MONUMENTS AS SHOWN BELOW.

(c)(d)(e) PLAN VIEW OF CORNER WITH TIES TO AT LEAST FOUR WITNESSES. IF IN DISAGREEMENT WITH PREVIOUSLY ESTABLISHED CORNER, SHOW THE DISTANCES BETWEEN THE TWO CORNERS AND ALSO INDICATE THE TIE TO THE DISPUTED CORNER.



RECEIVED BY LINCOLN COUNTY SURVEYOR THIS 30TH DAY OF December 20 10
Gregory S. Maines
 COUNTY SURVEYOR



I GREGORY S. MAINES, REGISTERED LAND SURVEYOR NO. 2729, HEREBY CERTIFY THAT THE CORNER LOCATION ON THIS RECORD WAS REFERENCED BY ME OR UNDER MY DIRECTION AND CONTROL AND THAT THIS U.S. PUBLIC LAND SURVEY MONUMENT RECORD IS COMPLETE TO THE BEST OF MY KNOWLEDGE AND BELIEF.
Gregory S. Maines 12/29/10
 SIGNATURE

INDEX NO. A-21

NORTHEAST CORNER OF SECTION 2, T34N, R05E

FACING NORTH



FACING SOUTH



FACING EAST



FACING WEST

