

Attachment to Tie Sheet W-13, T35N, R5E

43505332000

I visited the corner on 5/30/2019 to verify the corner and reference tie monumentation before Town Road work. I found a 7/8" Rebar at the road surface and all 4 ties from the Matthew Hoglund tie sheet (10/21/2009). The established Coordinates and ties agree with existing monument. Returned on 7/30/2019 to set a R. R. Spike for a surface monument.

Anthony R. Dallman 8/29/19

Anthony R. Dallman, PLS-2405

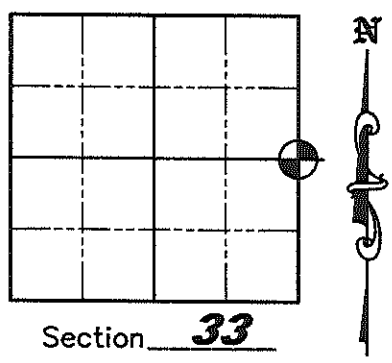
Lincoln County Surveyor



U.S. PUBLIC LAND SURVEY MONUMENT RECORD

NOTE: This form is intended and designed to fulfill all requirements of Wisconsin Administrative Code, Chapter A-E 7.08 U.S. Public Land Survey Monument Record (3)(a)(b)(c)(d)(e)(f)(g)(h)(i). An additional sheet may be added if necessary to conform with said requirements.

(a) Corner location: Township 35 North
 Range 5 East
 Town of Wilson
 County of Lincoln
 Lincoln County N 229856.264
 Coordinates E 349130.757



Section 33

(b)(f)(g)(h) Description of monument found at this corner and if it was accepted, state all evidence (material, testimonial, occupation, plats, records, other monuments) used as a basis for accepting. If not accepted or if nothing was found, state evidence used as a basis for establishing location. If reestablished through lost corner proportionate methods, indicate all monuments, distances and directions used to establish. Indicate type of monument found or set and sign post.

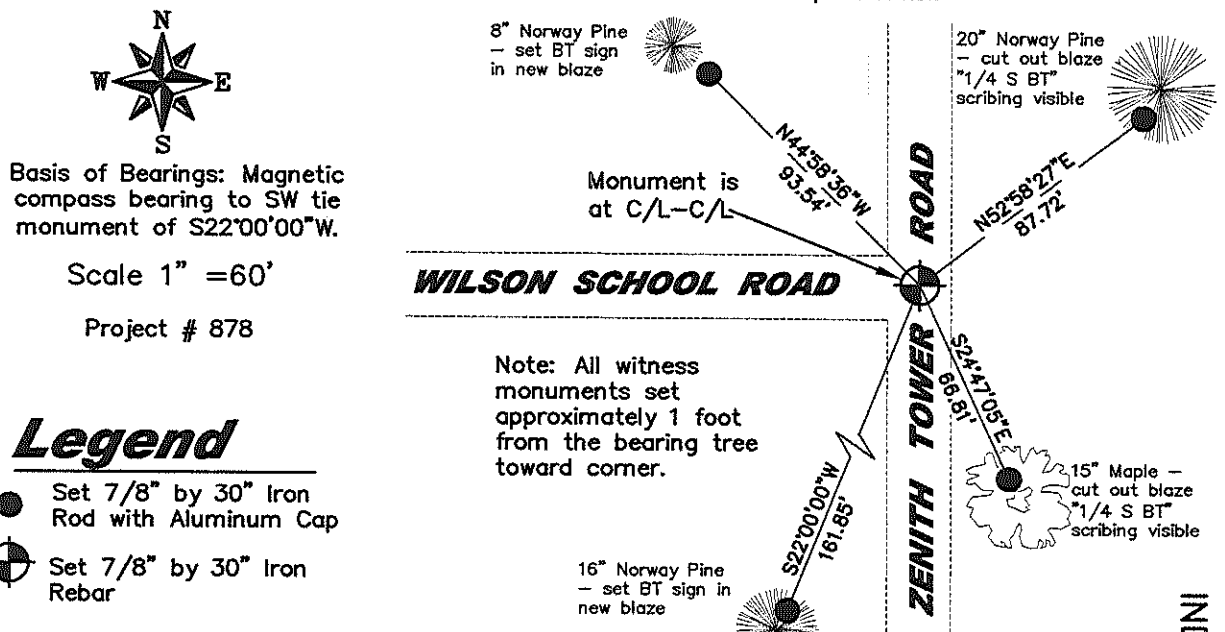
September 27, 1862 - Joseph H. Jenkins set wood Section post with bearing trees: White Pine 12° S70°W, 43 links, no other trees near

1963 - Owens-Illinois "Staff Compass & Chain Survey using corners found" of Section 34 (per drawing dated 1/2/87 by W.H. Stuth) shows monument "By Others" in place at corner at road intersection.

November 11, 1984 - Certified Land Corner Restoration by Lester Schmit, he "Found a railroad spike just below the blacktop near the intersection of the centerlines of Wilson School Road and Zenith Tower Road. Bruce Schreffler, a long time resident verified location as being the corner, having been shown the corner by his father many years ago." Replaced railroad spike with Bermtsen Monument - set witnesses: 12" Norway Pine, N51°E, 88.98'; 10" Red Maple, S27°E, 67.82'; 10" Norway Pine, S15°W, 87.67'; 22" Norway Pine, N65°W, 120.62'.

July-September, 2009 - Matthew E. Hoglund found all 4 witnesses, NW BT was a rotted stump with blaze visible and SW BT was a stump freshly cut w/blaze visible. Swung ties and dig not get definitive corner location. Had inconsistent location with magnetic locator, so I dug hole in pavement and excavated hole 3' deep under pavement and found base of Bermtsen Monument lying sideways and disturbed. Called Lester and asked him how he took witness distances in 1984. He said he took them to the face of the blaze. Swung ties again using blaze faces and had an excellent intersection to re-establish corner. As excavated hole would not take pavement nail, set 7/8" by 30" rebar for corner 0.2' below pavement and took static post-processed GPS measurements to establish Lincoln County Coordinates and set new witnesses as shown below.

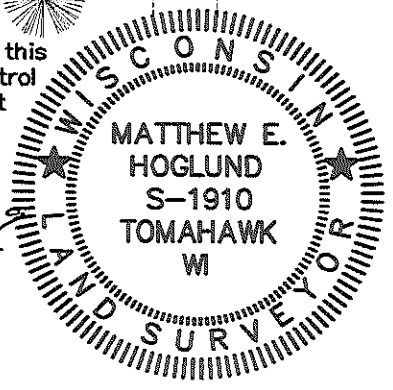
(c)(d)(e) Plan view of corner with ties to at least 4 witness monuments. If in disagreement with previously established corner, show the distances between the two corners and also indicate the ties to the disputed corner.



- Legend**
- Set 7/8" by 30" Iron Rod with Aluminum Cap
 - ⊕ Set 7/8" by 30" Iron Rebar

(i) I, Matthew E. Hoglund, certify that the corner location on this record was determined by me under my direction and control and that this U.S. Public Land Survey Monument is correct and complete to the best of my knowledge and belief.

Matthew E. Hoglund
 Signature Date 10/21/2009



INDEX NO. W-13

CERTIFIED LAND CORNER RESTORATION

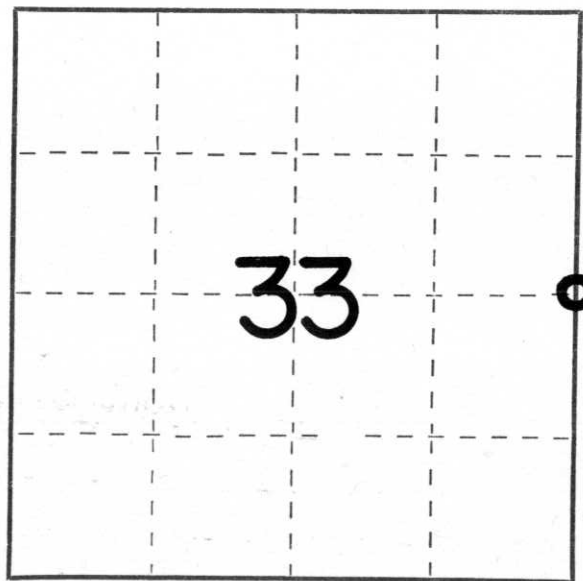
Index No. W-13

State of Wisconsin }
County of Lincoln } ss.

I Lester J. Schmit, do hereby certify that on the 7th day of November, 1984, I found evidence of the East 1/4 corner of Section 33 Township 35, North, Range 5 East, Fourth, Principal Meridian, as described hereon; and that from this evidence I established a new monument and accessories as described hereon to perpetuate the original location of this corner.

Resident witnesses:

Bruce Schreffler



○ = Corner monument restored.

History of original corner establishment:

Surveyor: Joseph W. Jenkins
Date: 27 September 1862
Monumentation: Wood Post
Witnesses: White Pine 12, S 70° W, 43 links
no other trees near

Description of corner evidence found: Found a railroad spike just below the blacktop near the intersection of the centrelines of Wilson School Road & Zenith Tower Road. Bruce Schreffler, a long time resident verified location as being the corner, having been shown the corner by his father many years ago.

Description of monument and accessories I established to perpetuate the original location of this corner.

Set Berntsen monument for the corner to replace the railroad spike. See reverse side for diagram.

Witnessed by: 12" norway pine, N 51° E, 88.98'
10" red maple, S 27° E, 67.82'
10" norway pine, S 15° W, 87.67'
22" norway pine, N 65° W, 120.62'

Dated at Tomahawk, Wis., this 11th day of November, 1984

Signature Lester J. Schmit Title Land Surveyor Registration No. S-1192
(County Surveyor, Registered Land Surveyor, or other duly authorized official)

Office of Register of Deeds, County of _____, I hereby certify that the within instrument was filed in this office for record on the _____ day of _____, 19____ at _____ o'clock _____ M.

(Register of Deeds)

By _____ Deputy