

U.S. PUBLIC LAND SURVEY MONUMENT RECORD

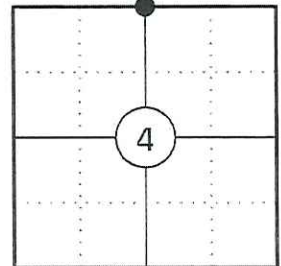
NOTE: THIS FORM IS INTENDED AND DESIGNED TO FULFILL ALL REQUIREMENTS OF WISCONSIN ADMINISTRATIVE CODE CHAPTER A-E 7.08 U.S. PUBLIC LAND SURVEY MONUMENT RECORD (3) (a)(b)(c)(d)(e)(f)(g)(h)(i). AN ADDITIONAL SHEET MAY BE ADDED IF NECESSARY TO CONFIRM WITH SAID REQUIREMENTS.

(a) CORNER LOCATION:

NORTH 1/4 CORNER OF SECTION 4
 TOWNSHIP 34 NORTH
 RANGE 5 EAST
 TOWN OF TOMAHAWK
 COUNTY OF LINCOLN

LINCOLN COUNTY COORDINATES:

N: 227199.11
 E: 346476.52



(b) HISTORY OF ORIGINAL CORNER:

ORIGINAL SURVEYOR: JAMES M. MARSH
 DATE OF SURVEY: AUG. 1851

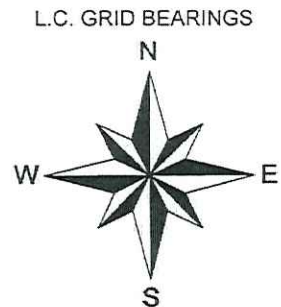
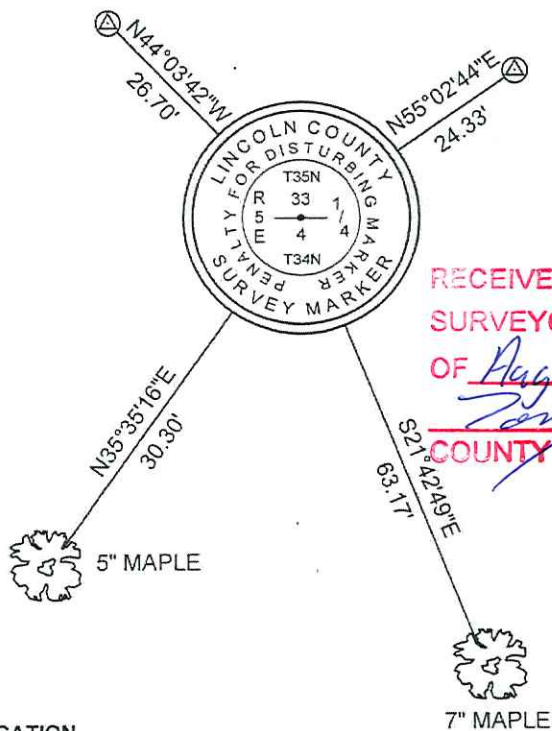
ORIGINAL BEARING TREES: 18" BLACK PINE - S85°, 46 LKS
 6" BLACK PINE - N03°E, 9 LKS

(f)(g)(h) DESCRIPTION OF MONUMENT FOUND AT THIS CORNER AND IF IT WAS ACCEPTED STATE ALL EVIDENCE (MATERIAL, TESTIMONIAL, OCCUPATIONAL, PLATS, RECORDS, OTHER MONUMENTS) USED AS A BASIS FOR ESTABLISHING LOCATION. IF REESTABLISHING THROUGH LOST CORNER PROPORTIONATE METHODS, INDICATE ALL MONUMENTS, DISTANCES, AND DIRECTIONS USED TO ESTABLISH. INDICATE TYPE OF MONUMENT AND SIGN POST FOUND OR SET.

1851: JAMES M. MARSH SET THE ORIGINAL 1/4 SECTION CORNER POST.

03/26/2012: I FOUND NO EVIDENCE OF THE ORIGINAL CORNER. I POSITIONED THE CORNER BY SINGLE PROPORTION USING THE NW AND NE CORNERS OF SECTION 4. THE POSITION CHECKS WELL WITH THE NORTHERLY EXTENSION OF A FENCE LINE THAT RUNS NORTH FROM THE S 1/4 CORNER ABOUT 3/4 OF THE WAY THROUGH THE SECTION. I SET A LINCOLN COUNTY BERNTSEN MONUMENT FOR THE CORNER, MADE TWO BEARING TREES AND SET TWO REFERENCE MONUMENTS TO WITNESS THE CORNER.

(c)(d)(e) PLAN VIEW OF CORNER WITH TIES TO AT LEAST FOUR WITNESSES. IF IN DISAGREEMENT WITH PREVIOUSLY ESTABLISHED CORNER, SHOW THE DISTANCES BETWEEN THE TWO CORNERS AND ALSO INDICATE THE TIE TO THE DISPUTED CORNER.



RECEIVED BY LINCOLN COUNTY SURVEYOR THIS 13TH DAY OF August 20, 2012
Tony Dahl
 COUNTY SURVEYOR

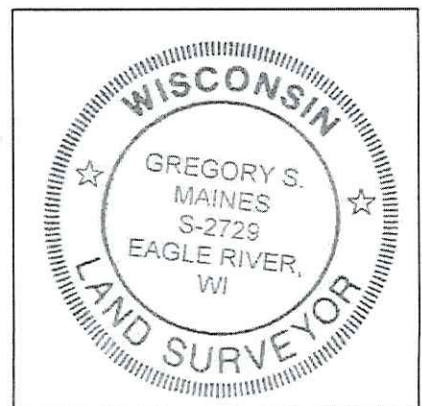
3/4" X 30" IRON REBAR WITH LINCOLN CO. ALUM. CAP SET

SKETCH IS NOT TO SCALE
 DISTANCES TO BT'S ARE TO NAIL IN SIDE

CERTIFICATION

I GREGORY S. MAINES, REGISTERED LAND SURVEYOR NO. 2729, HEREBY CERTIFY THAT THE CORNER LOCATION ON THIS RECORD WAS REFERENCED BY ME OR UNDER MY DIRECTION AND CONTROL AND THAT THIS U.S. PUBLIC LAND SURVEY MONUMENT RECORD IS COMPLETE TO THE BEST OF MY KNOWLEDGE AND BELIEF.

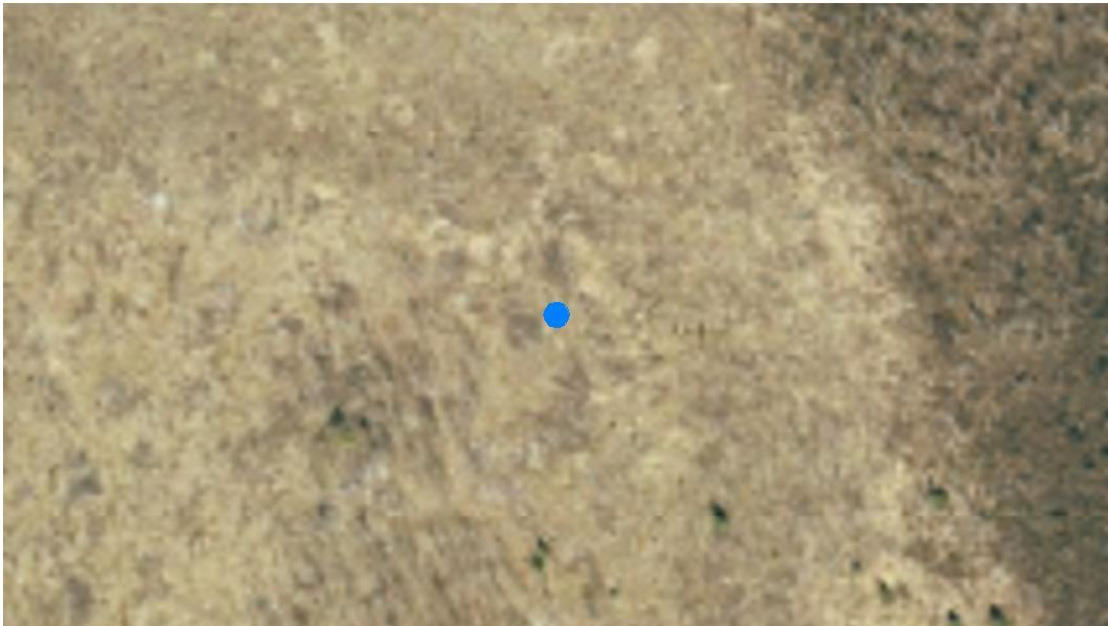
Gregory S. Maines 3/26/2012
 SIGNATURE



INDEX NO. A-11

NORTH 1/4 CORNER - SECTION 4, T 34 N, R 5 E

OVERVIEW



MONUMENT SET



FACING NORTH



NORTH 1/4 CORNER - SECTION 4, T 34 N, R 5 E

FACING EAST



FACING SOUTH



FACING WEST

