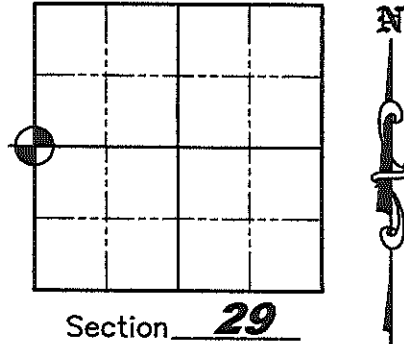


# U.S. PUBLIC LAND SURVEY MONUMENT RECORD

NOTE: This form is intended and designed to fulfill all requirements of Wisconsin Administrative Code, Chapter A-E 7.08 U.S. Public Land Survey Monument Record (3)(a)(b)(c)(d)(e)(f)(g)(h)(i). An additional sheet may be added if necessary to conform with said requirements.

(a) Corner location: Township 35 North  
 Range 5 East  
 Town of Wilson  
 County of Lincoln  
 Lincoln County N 235155.536  
 Coordinates E 338531.734



(b)(f)(g)(h) Description of monument found at this corner and if it was accepted, state all evidence (material, testimonial, occupation, plats, records, other monuments) used as a basis for accepting. If not accepted or if nothing was found, state evidence used as a basis for establishing location. If reestablished through lost corner proportionate methods, indicate all monuments, distances and directions used to establish. Indicate type of monument found or set and sign post.

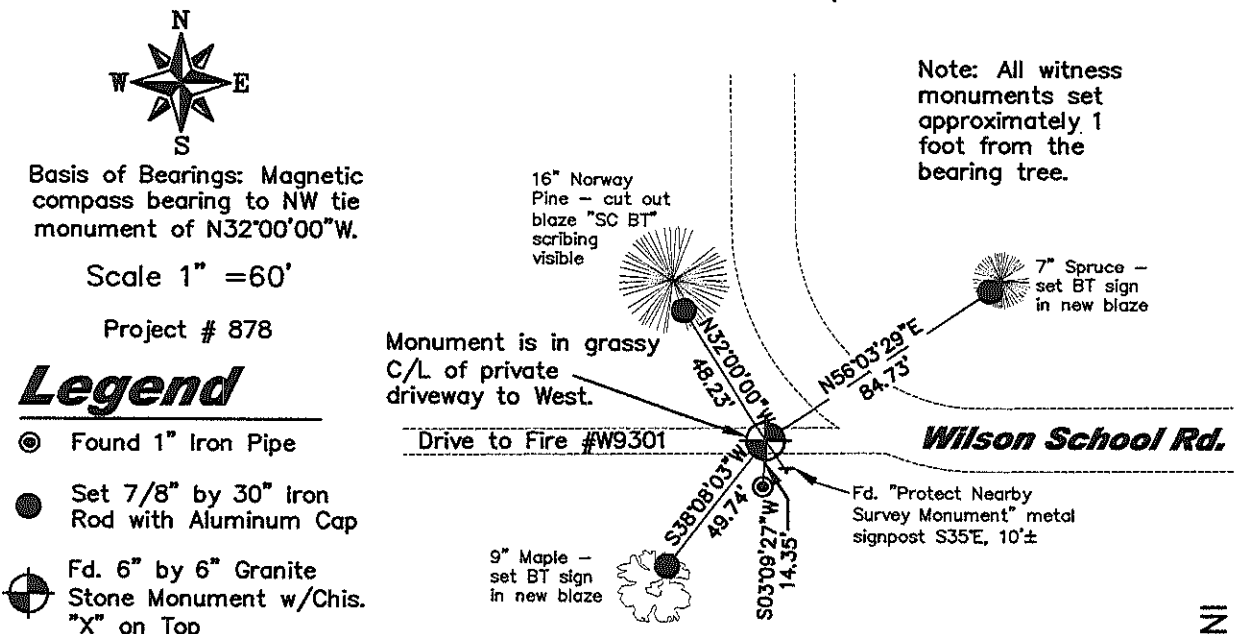
September 30, 1862 - Joseph H. Jenkins set wood Section post with bearing trees: Birch 7" S33°E, 15 links, no other trees near

Unknown Date - Granite Monument and witness post set.\*\*

November 11, 1984 - Certified Land Corner Restoration by Lester Schmit, he "Found a 6-1/2" x 6" granite Monument for the corner. A 6" diameter green and white location post is 15' South of the corner". Left granite monument in for the corner and set a 5/8" iron rod against the West side of the granite for location purposes - set witnesses: 1" iron pipe, N1°E, 14.40'; 1" iron pipe, S1°W, 14.40'; 8" Red Maple, S33°W, 50.75'; 5" Norway Pine, N36°W, 48.95'.

July-September, 2009 - Matthew E. Hoglund found granite monument with chiseled "x" on top with 5/8" iron rod bent over the top of the monument from the West. Witnesses - found Norway BT to NW and 1" iron pipe to South - just North of wood location post, other 2 witnesses now gone. (\*\*Note that the granite stone monument with a chiseled "x" on top and the wood location post are consistent with monumentation by Francis X. Fox, former Lincoln County Surveyor, based on my extensive experience with retracing his work over the years.) Took static post-processed GPS measurements to establish Lincoln County Coordinates and set new witnesses as shown below.

(c)(d)(e) Plan view of corner with ties to at least 4 witness monuments. If in disagreement with previously established corner, show the distances between the two corners and also indicate the ties to the disputed corner.



Basis of Bearings: Magnetic compass bearing to NW tie monument of N32°00'00\"/>

Scale 1" = 60'

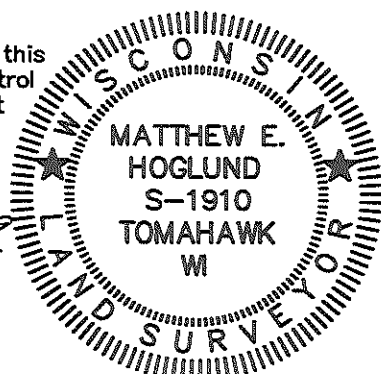
Project # 878

## Legend

- ⊙ Found 1" Iron Pipe
- Set 7/8" by 30" Iron Rod with Aluminum Cap
- ⊙ Fd. 6" by 6" Granite Stone Monument w/Chis. "X" on Top

(i) I, Matthew E. Hoglund, certify that the corner location on this record was determined by me under my direction and control and that this U.S. Public Land Survey Monument is correct and complete to the best of my knowledge and belief.

*Matthew E. Hoglund*  
 Signature Date 10/21/2009



INDEX NO. S-5

CERTIFIED LAND CORNER RESTORATION

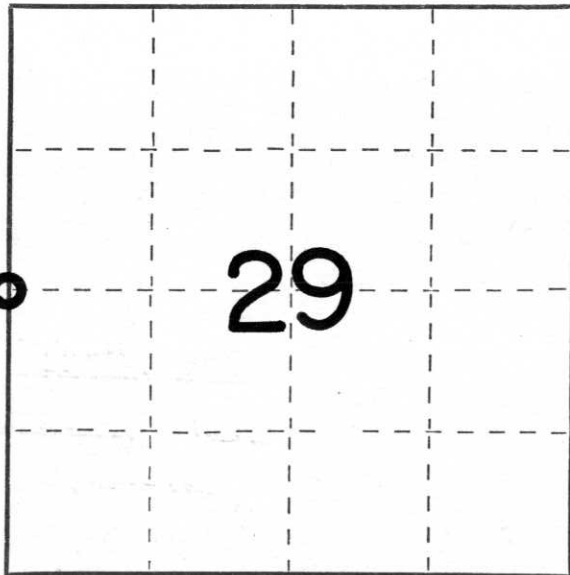
Index No. 5-5

State of Wisconsin }  
County of Lincoln } ss.

I Lester J. Schmit, do hereby certify that on the 7<sup>th</sup> day of November, 1984, I found evidence of the West 1/4 corner of Section 29 Township 35, North, Range 5 East, Fourth, Principal Meridian, as described hereon; and that from this evidence I established a new monument and accessories as described hereon to perpetuate the original location of this corner.

Resident witnesses:

.....  
.....  
.....



○ = Corner monument restored.

History of original corner establishment:

Surveyor: Joseph W. Jenkins  
Date: 30 September 1862  
Monumentation: Wood Post  
Witnesses: Birch 7, S 33° E, 15 links  
no other trees near

Description of corner evidence found: Found a 6 1/2"x6" granite monument for the corner. A 6" diameter green & white location post is 15' south of the corner.

Description of monument and accessories I established to perpetuate the original location of this corner.

Left granite monument in for the corner and set a 5/8" iron rod against the west side of the granite for location purposes. See diagram on reverse side. Witnessed by: 1" iron pipe, N 1° E, 14.40'  
1" iron pipe, S 1° W, 14.40'  
8" red maple, S 33° W, 50.75'  
5" norway pine, N 36° W, 48.95'

Dated at Tomahawk, Wis., this 11<sup>th</sup> day of November, 1984

Signature Lester J. Schmit Title Land Surveyor Registration No. S-1192  
(County Surveyor, Registered Land Surveyor, or other duly authorized official)

Office of Register of Deeds, County of....., I hereby certify that the within instrument was filed in this office for record on the.....day of....., 19..... at.....o'clock..... M..

.....  
(Register of Deeds)  
By.....Deputy