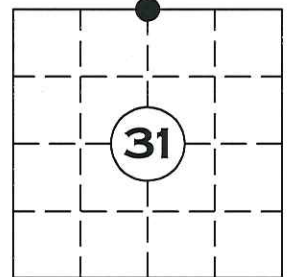


U.S. PUBLIC LAND SURVEY MONUMENT RECORD

NOTE: THIS FORM IS INTENDED AND DESIGNED TO FULFILL ALL REQUIREMENTS OF WISCONSIN ADMINISTRATIVE CODE CHAPTER A-E 7.08 U.S. PUBLIC LAND SURVEY MONUMENT RECORD (3) (a)(b)(c)(d)(e)(f)(g)(h)(i). AN ADDITIONAL SHEET MAY BE ADDED IF NECESSARY TO CONFIRM WITH SAID REQUIREMENTS.

(a) CORNER LOCATION:
 SECTION 31 TOWNSHIP 35 NORTH, RANGE 5 EAST
 TOWN OF: WILSON, LINCOLN COUNTY
 LINCOLN COUNTY COORDINATES:
 NORTHING: 232555.761
 EASTING: 335925.564

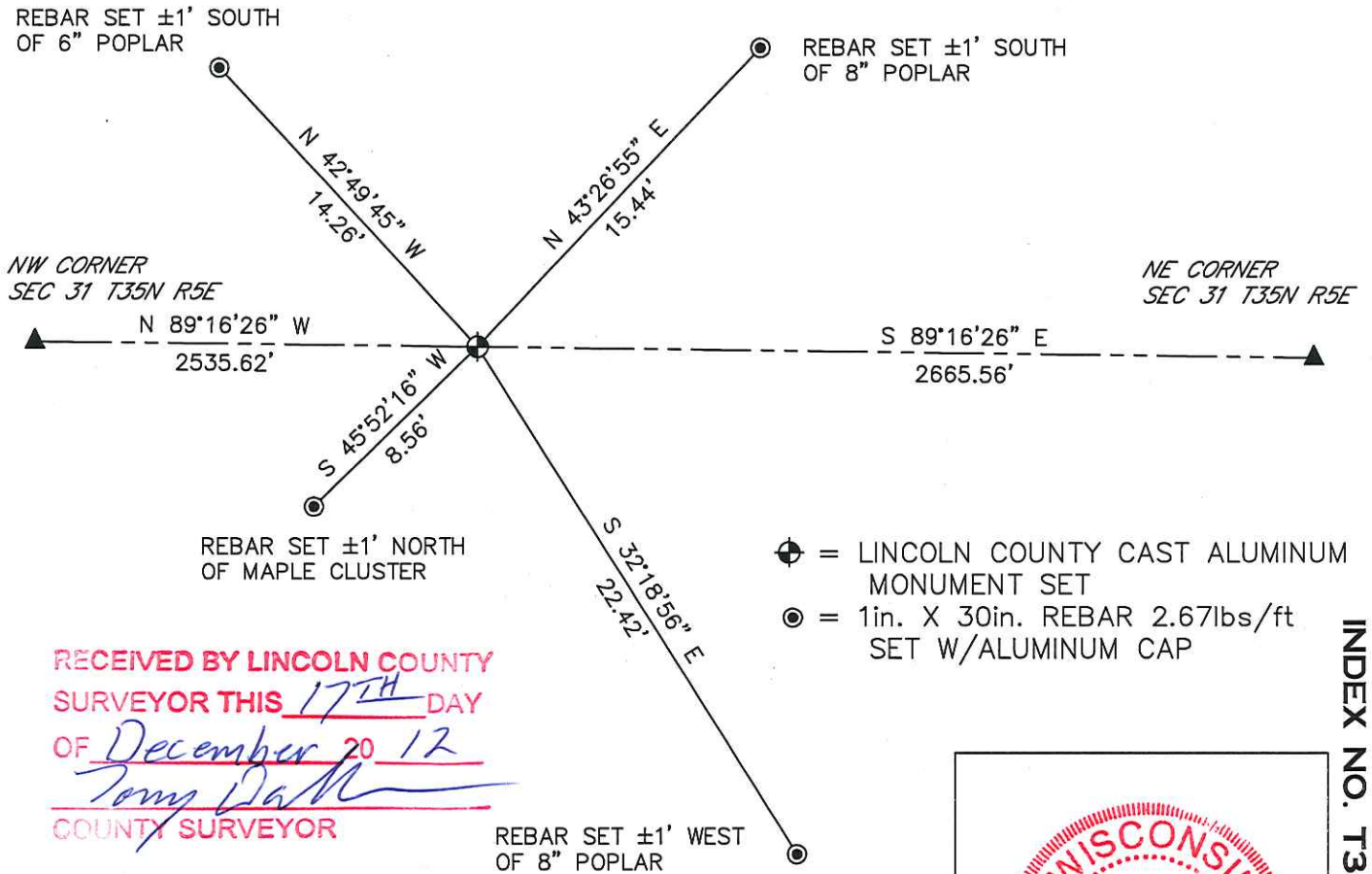


(b) HISTORY OF ORIGINAL CORNER:
 ORIGINAL SURVEYOR: JOSEPH H. JENKINS: SEPT. 1862 – OCT. 1862
 NO TIES NEAR

(f)(g)(h) DESCRIPTION OF MONUMENT FOUND AT THIS CORNER AND IF IT WAS ACCEPTED STATE ALL EVIDENCE (MATERIAL, TESTIMONIAL, OCCUPATIONAL, PLATS, RECORDS, OTHER MONUMENTS) USED AS A BASIS FOR ESTABLISHING LOCATION. IF REESTABLISHED THROUGH LOST CORNER PROPORTIONATE METHODS, INDICATE ALL MONUMENTS, DISTANCES, AND DIRECTIONS USED TO ESTABLISH. INDICATE TYPE OF MONUMENT AND SIGN POST FOUND OR SET.

SEARCH OF AREA REVEALED NO EVIDENCE OF ORIGINAL MONUMENT. SET LINCOLN COUNTY CAST ALUMINUM MONUMENT AND FOUR NEW WITNESS MONUMENTS

(c)(d)(e) PLAN VIEW OF CORNER WITH TIES TO AT LEAST FOUR WITNESSES. IF IN DISAGREEMENT WITH PREVIOUSLY ESTABLISHED CORNER, SHOW THE DISTANCE BETWEEN THE TWO CORNERS AND ALSO INDICATED THE TIE TO THE DISPUTED CORNER.



RECEIVED BY LINCOLN COUNTY
 SURVEYOR THIS 17TH DAY
 OF December 20 12
Tommy Damm
 COUNTY SURVEYOR

I DARREN B. KRZANOWSKI, REGISTERED LAND SURVEYOR NO. 2663, HEREBY CERTIFY THAT THE CORNER LOCATION ON THIS RECORD WAS REFERENCED BY ME OR UNDER MY DIRECTION AND CONTROL AND THAT THIS U.S. PUBLIC LAND SURVEY MONUMENT RECORD IS COMPLETE TO THE BEST OF MY KNOWLEDGE AND BELIEF.

Darren B. Krzanowski
 DARREN B. KRZANOWSKI RLS 2663
 DATED THIS 13TH DAY OF DECEMBER, 2012



INDEX NO. T35N R5E U3





PLEASE
DO NOT
DISTURB
NEARBY
SURVEY
POINT



PLEASE
DO NOT
DISTURB
NEARBY

SURVEY

IF THE LOCATION
OF THIS MARKER
IS ENDANGERED



