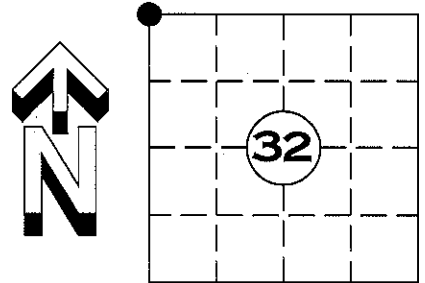


U.S. PUBLIC LAND SURVEY MONUMENT RECORD

NOTE: THIS FORM IS INTENDED AND DESIGNED TO FULFILL ALL REQUIREMENTS OF WISCONSIN ADMINISTRATIVE CODE CHAPTER A-E 7.08 U.S. PUBLIC LAND SURVEY MONUMENT RECORD (3) (a)(b)(c)(d)(e)(f)(g)(h)(i). AN ADDITIONAL SHEET MAY BE ADDED IF NECESSARY TO CONFIRM WITH SAID REQUIREMENTS.

(a) CORNER LOCATION: NW CORNER
SECTION 32 TOWNSHIP 35 NORTH, RANGE 5 EAST
TOWN OF WILSON LINCOLN COUNTY
LINCOLN COUNTY COORDINATES:
NORTHING: 232521.986
EASTING: 338590.912

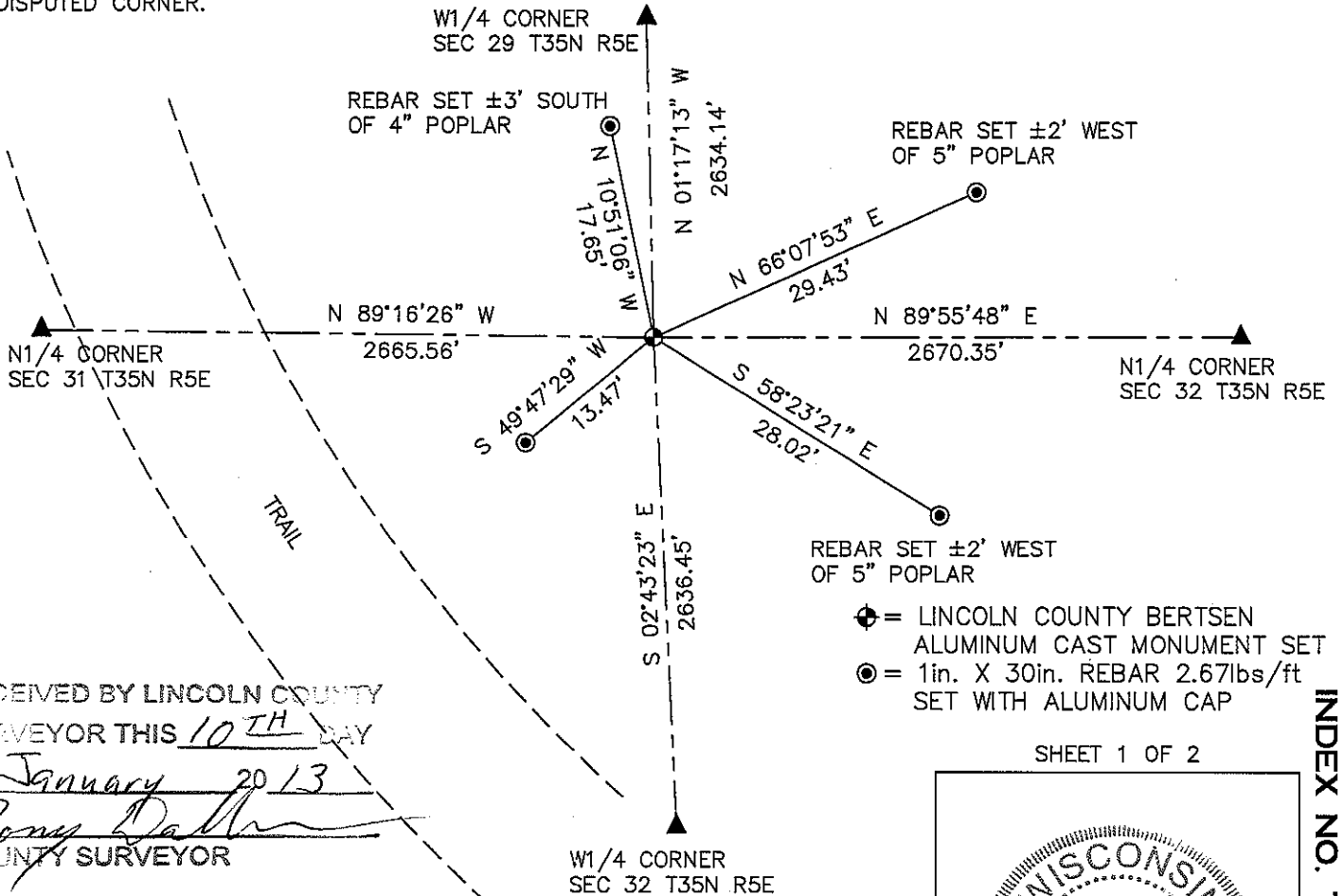


(b) HISTORY OF ORIGINAL CORNER:
ORIGINAL SURVEYOR:
JOSEPH H. JENKINS SEPT. 1862 – OCT. 1862
BIRCH 6 N 81° W 38 LINKS
BIRCH 6 N 37° E 40 LINKS
BIRCH 6 S 55° W 8 LINKS
FUR 7 S 80° E 38 LINKS

(f)(g)(h) DESCRIPTION OF MONUMENT FOUND AT THIS CORNER AND IF IT WAS ACCEPTED STATE ALL EVIDENCE (MATERIAL, TESTIMONIAL, OCCUPATIONAL, PLATS, RECORDS, OTHER MONUMENTS) USED AS A BASIS FOR ESTABLISHING LOCATION. IF REESTABLISHED THROUGH LOST CORNER PROPORTIONATE METHODS, INDICATE ALL MONUMENTS, DISTANCES, AND DIRECTIONS USED TO ESTABLISH. INDICATE TYPE OF MONUMENT AND SIGN POST FOUND OR SET.

5 FEBRUARY 2012: SEARCH OF AREA REVEALED NO EVIDENCE OF ORIGINAL CORNER. SET A LINCOLN COUNTY ALUMINUM CAST MONUMENT BY DOUBLE PROPORTIONATE MEASUREMENT BETWEEN THE NORTHWEST CORNER OF SECTION 31 T35N R5E AND THE NORTHWEST CORNER OF SECTION 33 T35N R5E AND THE WEST QUARTER CORNERS OF SECTION 29 AND 32 T35N R5E (SEE SHEET 2 OF 2). SET FOUR NEW WITNESS MONUMENTS.

(c)(d)(e) PLAN VIEW OF CORNER WITH TIES TO AT LEAST FOUR WITNESSES. IF IN DISAGREEMENT WITH PREVIOUSLY ESTABLISHED CORNER, SHOW THE DISTANCE BETWEEN THE TWO CORNERS AND ALSO INDICATED THE TIE TO THE DISPUTED CORNER.



RECEIVED BY LINCOLN COUNTY
SURVEYOR THIS 10TH DAY
OF January 2013
Darren B. Krzanowski
COUNTY SURVEYOR

SHEET 1 OF 2



INDEX NO. T35N R5E US

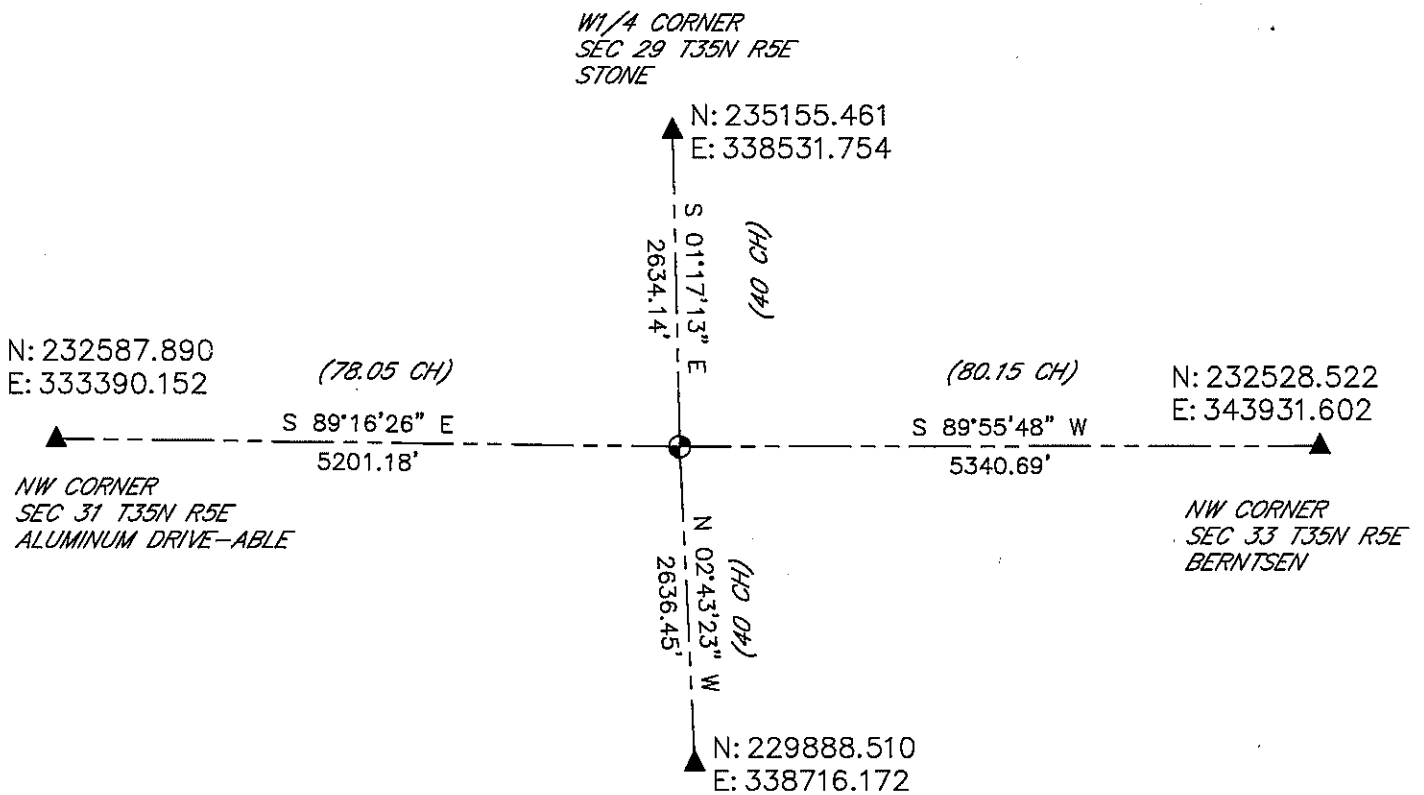
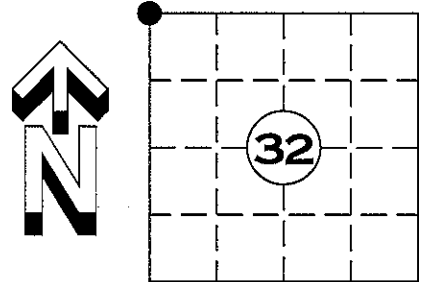
I DARREN B. KRZANOWSKI, REGISTERED LAND SURVEYOR NO. 2663, HEREBY CERTIFY THAT THE CORNER LOCATION ON THIS RECORD WAS REFERENCED BY ME OR UNDER MY DIRECTION AND CONTROL AND THAT THIS U.S. PUBLIC LAND SURVEY MONUMENT RECORD IS COMPLETE TO THE BEST OF MY KNOWLEDGE AND BELIEF.

Darren B. Krzanowski
DARREN B. KRZANOWSKI RLS 2663
DATED THIS 10TH DAY OF JANUARY, 2013

U.S. PUBLIC LAND SURVEY MONUMENT RECORD

NOTE: THIS FORM IS INTENDED AND DESIGNED TO FULFILL ALL REQUIREMENTS OF WISCONSIN ADMINISTRATIVE CODE CHAPTER A-E 7.08 U.S. PUBLIC LAND SURVEY MONUMENT RECORD (3) (a)(b)(c)(d)(e)(f)(g)(h)(i). AN ADDITIONAL SHEET MAY BE ADDED IF NECESSARY TO CONFIRM WITH SAID REQUIREMENTS.

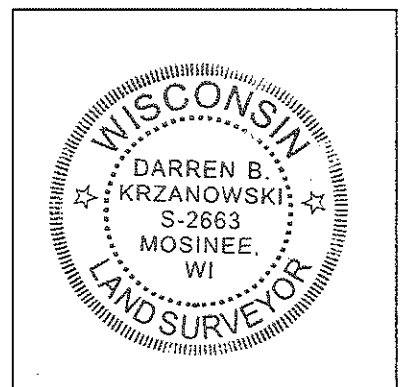
(a) CORNER LOCATION: NW CORNER
SECTION 32, TOWNSHIP 35 NORTH, RANGE 5 EAST
TOWN OF WILSON LINCOLN COUNTY



RECEIVED BY LINCOLN COUNTY
SURVEYOR THIS 10TH DAY
OF January 2013
Tony Dahl
COUNTY SURVEYOR

1/4 CORNER
SEC 32 T35N R5E
1 1/4in. OD IRON PIPE

SHEET 2 OF 2



INDEX NO. T35N R5E U5

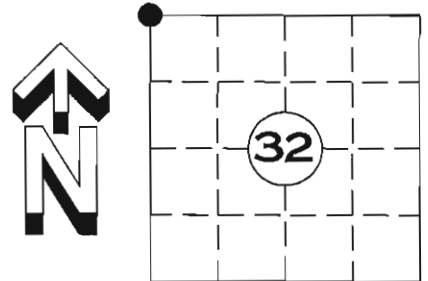
I DARREN B. KRZANOWSKI, REGISTERED LAND SURVEYOR NO. 2663, HEREBY CERTIFY THAT THE CORNER LOCATION ON THIS RECORD WAS REFERENCED BY ME OR UNDER MY DIRECTION AND CONTROL AND THAT THIS U.S. PUBLIC LAND SURVEY MONUMENT RECORD IS COMPLETE TO THE BEST OF MY KNOWLEDGE AND BELIEF.

Darren B. Krzanowski
DARREN B. KRZANOWSKI RLS 2663
DATED THIS 10TH DAY OF JANUARY, 2013

U.S. PUBLIC LAND SURVEY MONUMENT RECORD

NOTE: THIS FORM IS INTENDED AND DESIGNED TO FULFILL ALL REQUIREMENTS OF WISCONSIN ADMINISTRATIVE CODE CHAPTER A-E 7.08 U.S. PUBLIC LAND SURVEY MONUMENT RECORD (3) (a)(b)(c)(d)(e)(f)(g)(h)(i). AN ADDITIONAL SHEET MAY BE ADDED IF NECESSARY TO CONFIRM WITH SAID REQUIREMENTS.

(a) CORNER LOCATION: NW CORNER
 SECTION 32 TOWNSHIP 35 NORTH, RANGE 5 EAST
 TOWN OF WILSON LINCOLN COUNTY
 LINCOLN COUNTY COORDINATES:
 NORTHING: 232521.986
 EASTING: 338591.168

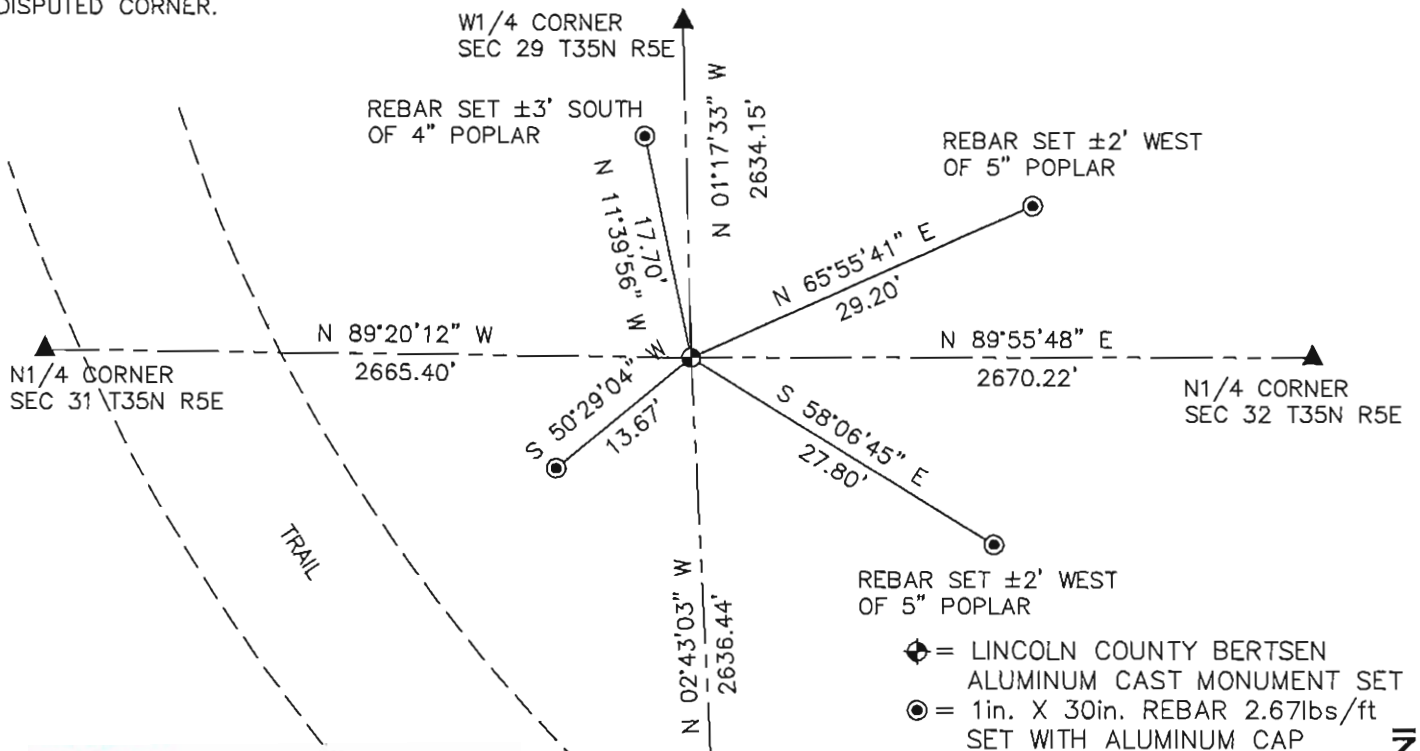


(b) HISTORY OF ORIGINAL CORNER:
 ORIGINAL SURVEYOR:
 JOSEPH H. JENKINS SEPT. 1862 – OCT. 1862
 BIRCH 6 N 81° W 38 LINKS
 BIRCH 6 N 37° E 40 LINKS
 BIRCH 6 S 55° W 8 LINKS
 FUR 7 S 80° E 38 LINKS

(f)(g)(h) DESCRIPTION OF MONUMENT FOUND AT THIS CORNER AND IF IT WAS ACCEPTED STATE ALL EVIDENCE (MATERIAL, TESTIMONIAL, OCCUPATIONAL, PLATS, RECORDS, OTHER MONUMENTS) USED AS A BASIS FOR ESTABLISHING LOCATION. IF REESTABLISHED THROUGH LOST CORNER PROPORTIONATE METHODS, INDICATE ALL MONUMENTS, DISTANCES, AND DIRECTIONS USED TO ESTABLISH. INDICATE TYPE OF MONUMENT AND SIGN POST FOUND OR SET.

5 FEBRUARY 2012: SEARCH OF AREA REVEALED NO EVIDENCE OF ORIGINAL CORNER. SET A LINCOLN COUNTY ALUMINUM CAST MONUMENT BY DOUBLE PROPORTIONATE MEASUREMENT BETWEEN THE NORTHWEST CORNER OF SECTION 31 T35N R5E AND THE NORTHWEST CORNER OF SECTION 33 T35N R5E AND THE WEST QUARTER CORNERS OF SECTION 29 AND 32 T35N R5E (SEE SHEET 2 OF 2). SET FOUR NEW WITNESS MONUMENTS.

(c)(d)(e) PLAN VIEW OF CORNER WITH TIES TO AT LEAST FOUR WITNESSES. IF IN DISAGREEMENT WITH PREVIOUSLY ESTABLISHED CORNER, SHOW THE DISTANCE BETWEEN THE TWO CORNERS AND ALSO INDICATED THE TIE TO THE DISPUTED CORNER.

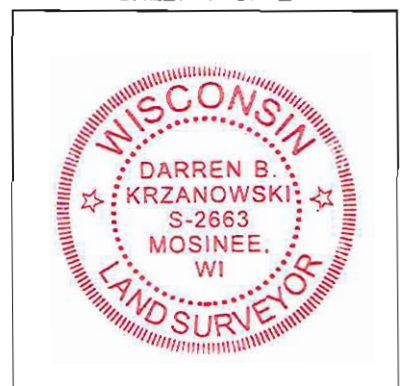


RECEIVED BY LINCOLN COUNTY
 SURVEYOR THIS 22ND DAY
 OF February 2012
Tracy Dahl
 COUNTY SURVEYOR

I DARREN B. KRZANOWSKI, REGISTERED LAND SURVEYOR NO. 2663, HEREBY CERTIFY THAT THE CORNER LOCATION ON THIS RECORD WAS REFERENCED BY ME OR UNDER MY DIRECTION AND CONTROL AND THAT THIS U.S. PUBLIC LAND SURVEY MONUMENT RECORD IS COMPLETE TO THE BEST OF MY KNOWLEDGE AND BELIEF.

Darren B. Krzanowski
 DARREN B. KRZANOWSKI RLS 2663
 DATED THIS 20TH DAY OF FEBRUARY, 2012

SHEET 1 OF 2

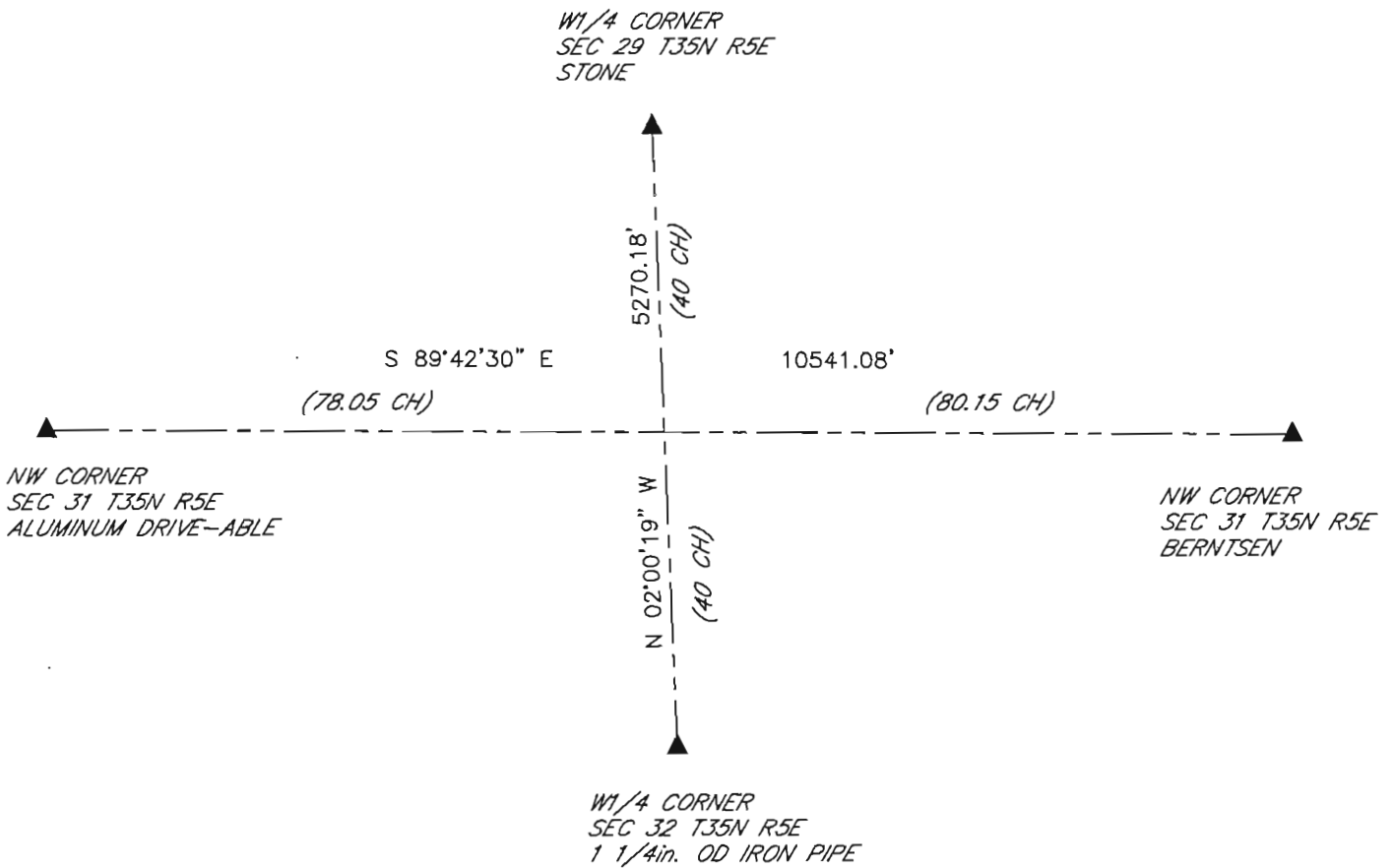
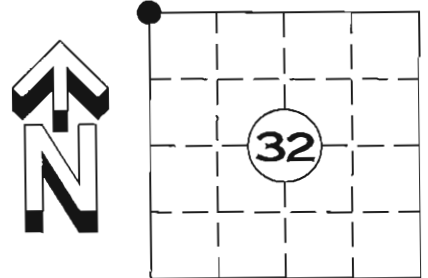


INDEX NO. T35N R5E US

U.S. PUBLIC LAND SURVEY MONUMENT RECORD

NOTE: THIS FORM IS INTENDED AND DESIGNED TO FULFILL ALL REQUIREMENTS OF WISCONSIN ADMINISTRATIVE CODE CHAPTER A-E 7.08 U.S. PUBLIC LAND SURVEY MONUMENT RECORD (3) (a)(b)(c)(d)(e)(f)(g)(h)(i). AN ADDITIONAL SHEET MAY BE ADDED IF NECESSARY TO CONFIRM WITH SAID REQUIREMENTS.

(a) CORNER LOCATION: NW CORNER
SECTION 32, TOWNSHIP 35 NORTH, RANGE 5 EAST
TOWN OF WILSON LINCOLN COUNTY



RECEIVED BY LINCOLN COUNTY
SURVEYOR THIS 22ND DAY
OF February 2012.
[Signature]
COUNTY SURVEYOR.

SHEET 2 OF 2



I DARREN B. KRZANOWSKI, REGISTERED LAND SURVEYOR NO. 2663, HEREBY CERTIFY THAT THE CORNER LOCATION ON THIS RECORD WAS REFERENCED BY ME OR UNDER MY DIRECTION AND CONTROL AND THAT THIS U.S. PUBLIC LAND SURVEY MONUMENT RECORD IS COMPLETE TO THE BEST OF MY KNOWLEDGE AND BELIEF.

[Signature]
DARREN B. KRZANOWSKI RLS 2663
DATED THIS 20TH DAY OF FEBRUARY, 2012

INDEX NO. T35N R5E US











MARKER PENALTY

MARKER PENALTY

FOR DRAINAGE

FOR DRAINAGE