

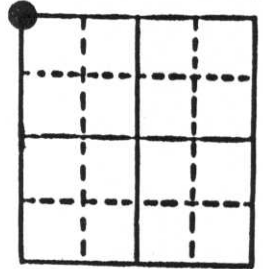
# U.S. PUBLIC LAND SURVEY MONUMENT RECORD

**Note:** This form is intended and designed to fulfill all requirements of Wisconsin Administrative Code, Chapter A-E 5.02, U.S. Public Land Survey Monument Record (3) (a) (b) (c) (d) (e) (f) (g) (h) (i). An additional sheet may be added if necessary to conform with said requirements.

(a) Corner location: Township 35 North  
 Range 5 East

Town Wilson

County Lincoln

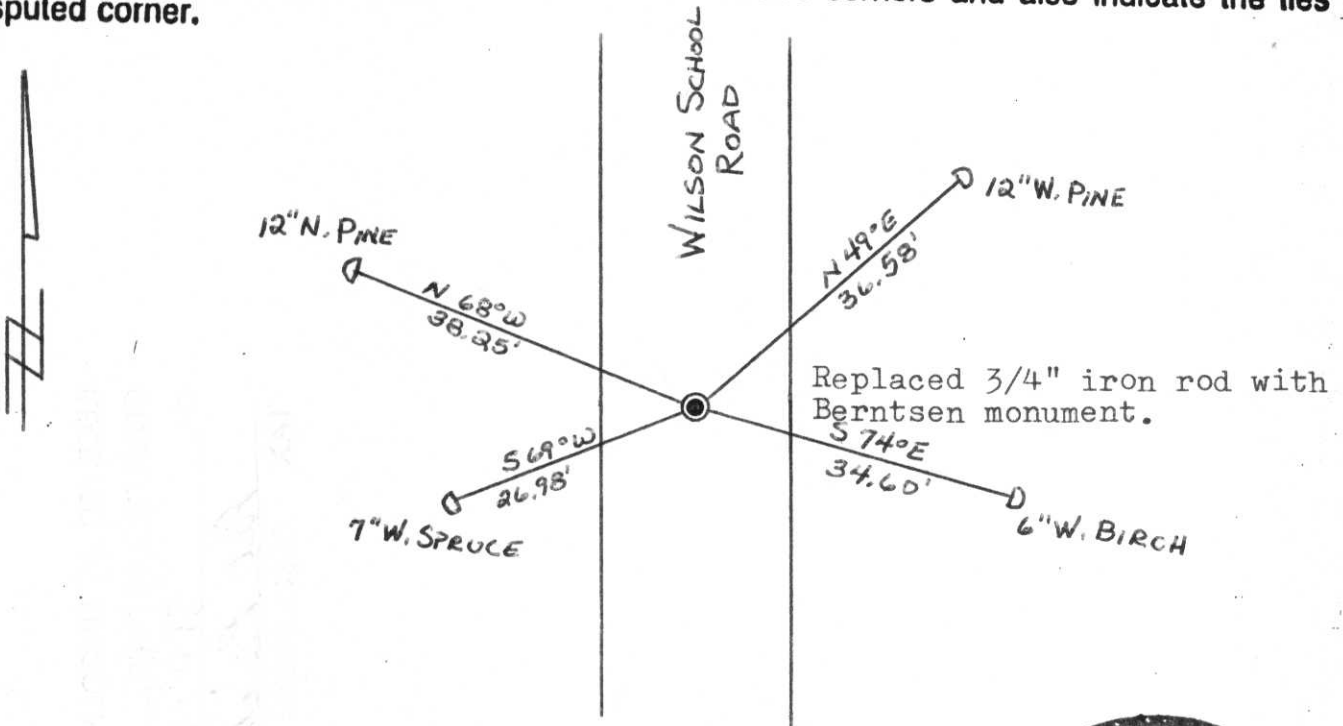


Section 33

b) (f) (g) (h) Description of monument found at this corner and if it was accepted, state all evidence (material, testimonial, occupational, plats, records, other monuments) used as a basis for accepting. If not accepted or if nothing was found, state evidence used as basis for establishing location. If reestablished through lost corner proportionate methods, indicate all monuments, distances and directions used to establish.

Original Gov't. Survey: Oct. 1862 by Joseph H. Jenkins, set wood post for corner with bearings, birch 8 N 45° W 9 links, birch 10 N 81° E 41 links, birch 10 S 25° W 11 links. I found a 3/4" iron rod set by William Stuth on survey in Nov. 1984. Mr. Stuth (S 1418) set the corner by using the centre-line of Wilson School Road for the east-west positioning and distances from town road notes for the north-south positioning.

c) (d) (e) Plan view of corner with ties to at least 4 witness monuments. If in disagreement with previously established corner, show the distances between the two corners and also indicate the ties to the disputed corner.



(i) I, Lester J. Schmit  
 (type or print name) certify that the corner location on this record was determined by me or under my direction and control and that this U.S. Public Land Survey Monument Record is correct and complete to the best of my knowledge and belief.

Lester J. Schmit Signature      9 Sep 85 Date



Index No. 11-9