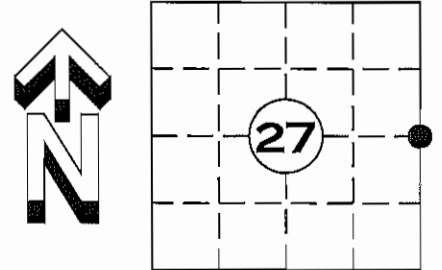


# U.S. PUBLIC LAND SURVEY MONUMENT RECORD

NOTE: THIS FORM IS INTENDED AND DESIGNED TO FULFILL ALL REQUIREMENTS OF WISCONSIN ADMINISTRATIVE CODE CHAPTER A-E 7.08 U.S. PUBLIC LAND SURVEY MONUMENT RECORD (3) (a)(b)(c)(d)(e)(f)(g)(h)(i). AN ADDITIONAL SHEET MAY BE ADDED IF NECESSARY TO CONFIRM WITH SAID REQUIREMENTS.

(a) CORNER LOCATION:  
 EAST QUARTER CORNER  
 SECTION 27, TOWNSHIP 35 NORTH, RANGE 5 EAST  
 TOWN OF WILSON, LINCOLN COUNTY  
 LINCOLN COUNTY COORDINATES:  
 NORTHING: 235158.702  
 EASTING: 354395.753



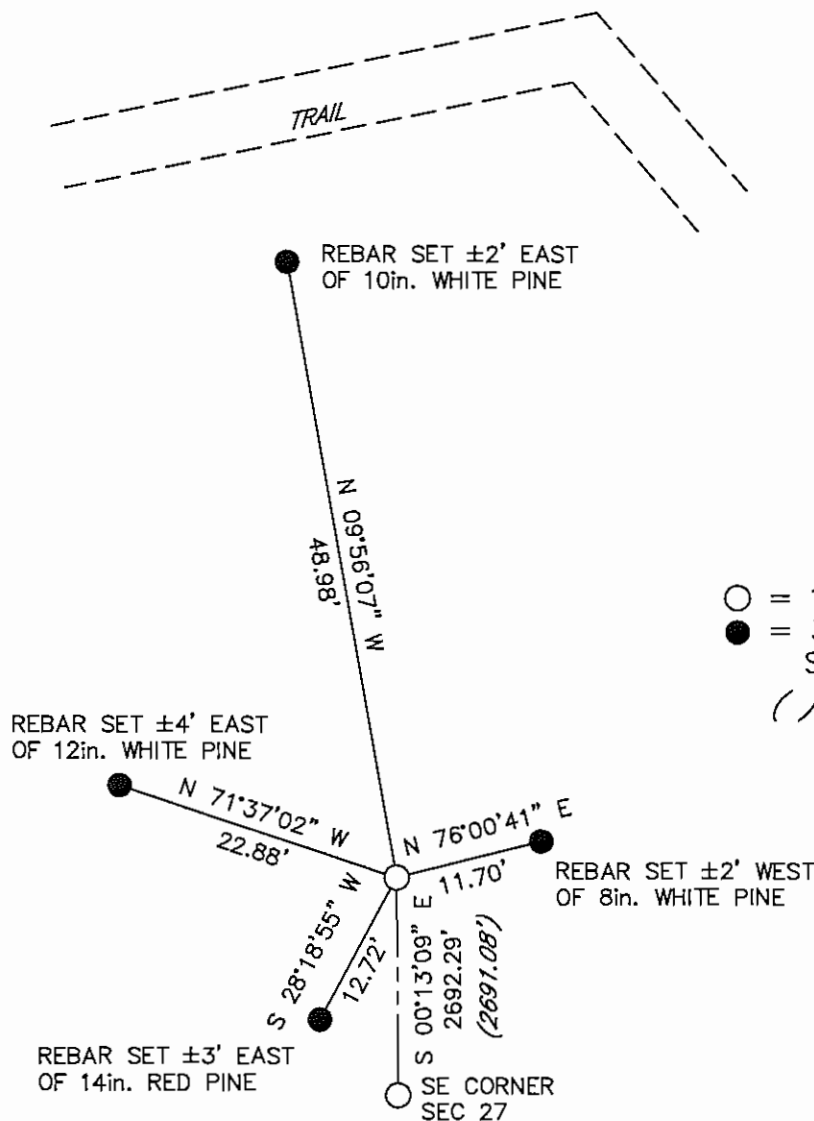
(b) HISTORY OF ORIGINAL CORNER:  
 ORIGINAL SURVEYOR: JOSEPH H. JENKINS SEPT. 1862 – OCT. 1862  
 WHITE PINE 12 N 1° W 10 LINKS  
 YELLOW PINE 7 S 6° E 17 LINKS

(f)(g)(h) DESCRIPTION OF MONUMENT FOUND AT THIS CORNER AND IF IT WAS ACCEPTED STATE ALL EVIDENCE (MATERIAL, TESTIMONIAL, OCCUPATIONAL, PLATS, RECORDS, OTHER MONUMENTS) USED AS A BASIS FOR ESTABLISHING LOCATION. IF REESTABLISHED THROUGH LOST CORNER PROPORTIONATE METHODS, INDICATE ALL MONUMENTS, DISTANCES, AND DIRECTIONS USED TO ESTABLISH. INDICATE TYPE OF MONUMENT AND SIGN POST FOUND OR SET.

BOUNDARY SURVEY PREPARED BY W.H. STUTH DATED 3-6-87 AND SURVEYED 1963-1972 FOR OWENS-ILLINOIS FOREST PRODUCTS, CALLS FOR AN IRON PIPE AT CORNER LOCATION.

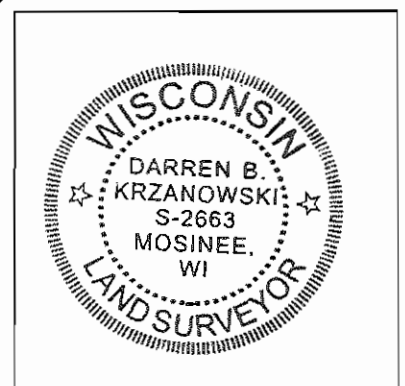
9 JANUARY 2012; FOUND 1 1/4in. OD IRON PIPE AT CORNER. IRON PIPE FIT CALLED FOR DISTANCE FROM SOUTHEAST CORNER SECTION 27 PER SAID BOUNDARY SURVEY. ACCEPTED LOCATION AND SET FOUR NEW WITNESS MONUMENTS.

(c)(d)(e) PLAN VIEW OF CORNER WITH TIES TO AT LEAST FOUR WITNESSES. IF IN DISAGREEMENT WITH PREVIOUSLY ESTABLISHED CORNER, SHOW THE DISTANCE BETWEEN THE TWO CORNERS AND ALSO INDICATED THE TIE TO THE DISPUTED CORNER.



- = 1 1/4in. OD IRON PIPE FOUND
- = 3/4in. X 30in. REBAR 1.50lbs/ft. SET WITH ALUMINUM CAP
- ( ) = PER SURVEY BY STUTH

RECEIVED BY LINCOLN COUNTY SURVEYOR THIS 20<sup>TH</sup> DAY OF January 20 12  
*Tom Dahr*  
 COUNTY SURVEYOR



I, DARREN B. KRZANOWSKI, REGISTERED LAND SURVEYOR NO. 2663, HEREBY CERTIFY THAT THE CORNER LOCATION ON THIS RECORD WAS REFERENCED BY ME OR UNDER MY DIRECTION AND CONTROL AND THAT THIS U.S. PUBLIC LAND SURVEY MONUMENT RECORD IS COMPLETE TO THE BEST OF MY KNOWLEDGE AND BELIEF.

*Darren Krzanowski*  
 DARREN B. KRZANOWSKI RLS 2663  
 DATED THIS 16TH DAY OF JANUARY, 2012

INDEX NO. T35N R5E S17







MARKER





MARKER  
10