

U.S. PUBLIC LAND SURVEY MONUMENT RECORD

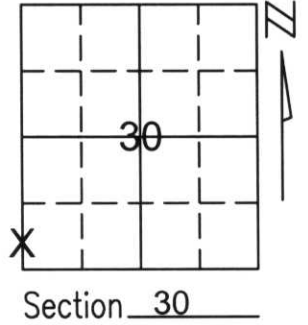
Note: This form is intended and designed to fulfill all requirements of Wisconsin Administrative Code, Chapter A-E 5.02, U.S. Public Land Survey Monument Record (3)(a)(b)(c)(d)(e)(f)(g)(h)(i). An additional sheet may be added if necessary to conform with said requirements.

(a) Corner location: Township 35 North

Range 6 East

Town/City/Village BRADLEY

County LINCOLN



(b)(f)(g)(h) Description of monument found at this corner and if it was accepted, state all evidence (material, testimonial, occupational, plats, records, other monuments) used as a basis for accepting. If not accepted or if nothing was found, state evidence used as basis for establishing location. If reestablished through lost corner proportionate methods, indicate all monuments, distances and directions used to establish.

THE NORTHWEST CORNER FALLS IN THE WATER. WE FOUND IRONS ON THE SOUTH LINE OF THE SOUTHWEST 1/4 OF SECTION 30 AND IRONS AND A 2" MEANDER CORNER WITH 2 BEARING TREES DENOTED ON SURVEYS PREPARED BY LESTER SCHMIDT AND STUART FOLTZ.

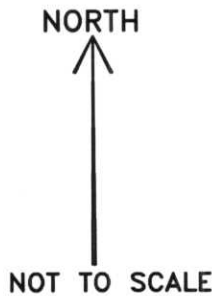
WE ALSO FOUND THE SOUTHWEST CORNER OF THE NORTHWEST 1/4 OF THE NORTHWEST 1/4 OF SECTION 31 AND TWO MEANDER CORNERS ALONG THE WEST LINE OF THE NORTHWEST 1/4 OF SECTION 31. WE PERFORMED A DISTANCE-DISTANCE INTERSECTION FROM THE FOUND SOUTHWEST CORNER OF THE NORTHWEST 1/4 OF THE NORTHWEST 1/4 OF SECTION 31 AND THE SOUTH 1/4 OF SECTION 30 TO RECREATE THE NORTHWEST CORNER OF SECTION 31.

THIS LOCATION FIT ALL FOUND IRONS AND SECTION CORNERS FOR DISTANCE AND LINE. WE HELD THE FOUND 2" IRON WITH BEARING TREES FOR NORTH MEANDER CORNER OF THE SOUTHWEST CORNER OF SECTION 30. SINCE THE 2" IRON PIPE WAS 2' OUT OF THE GROUND, WE REPLACED IT WITH A LINCOLN COUNTY MONUMENT AND TIED OUT CORNER.

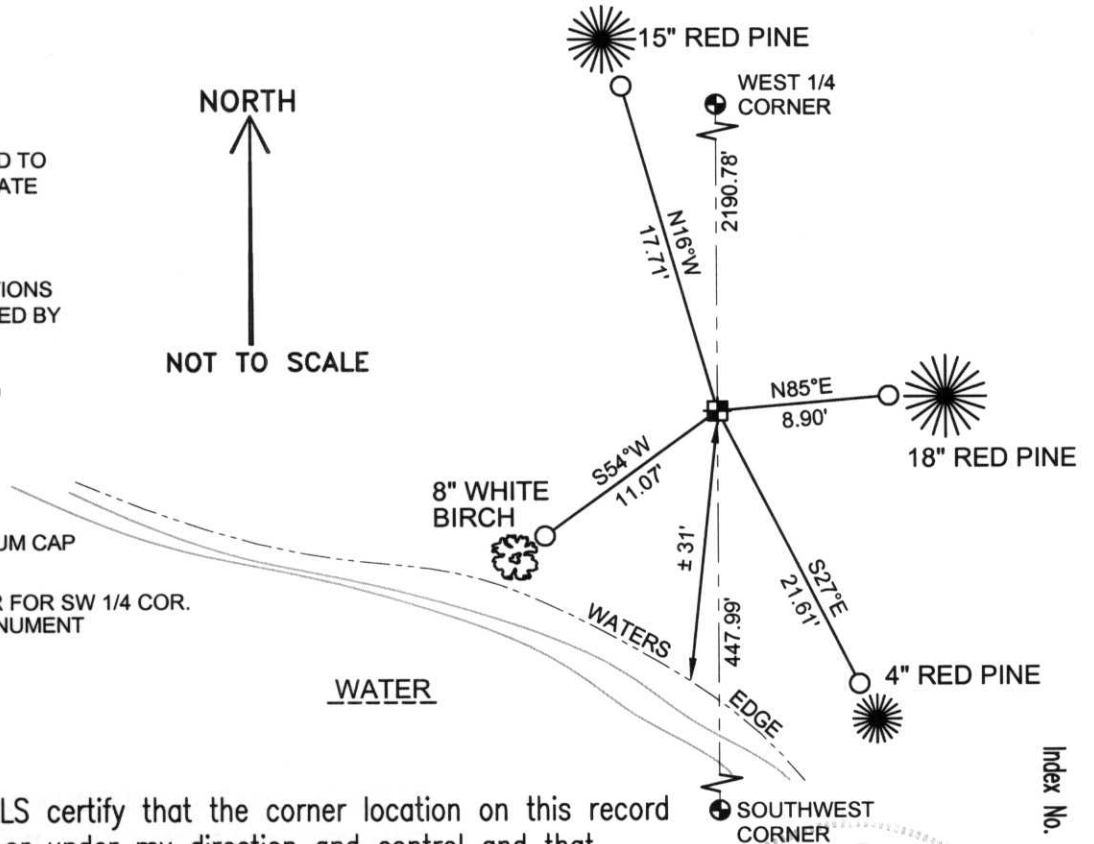
(c)(d)(e) Plan view of corner with ties to at least 4 witness monuments. If in disagreement with previously established corner, show the distances between the two corners and also indicate the ties to the disputed corner.

COORDINATES ARE REFERENCED TO THE LINCOLN COUNTY COORDINATE SYSTEM AS DEVELOPED BY THE WISCONSIN DEPARTMENT OF TRANSPORTATION AND WERE DETERMINED BY GPS OBSERVATIONS ON CONTROL POINTS AS SUPPLIED BY LINCOLN COUNTY.

BEARINGS ARE REFERENCED TO MAGNETIC NORTH.

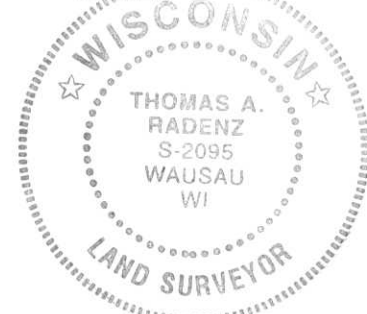


- - SET 3/4" x 30" REBAR W/ ALUM CAP 1' FROM BEARING TREE
- ⊕ - NORTH MEANDER CORNER FOR SW 1/4 COR. SET LINCOLN COUNTY MONUMENT W/ ALUM CAP



(i) I, Thomas A. Radenz, RLS certify that the corner location on this record was determined by me or under my direction and control and that this U.S. Public Land Survey Monument Record is correct and complete to the best of my knowledge and belief.

Thomas A. Radenz Signature 12/21/01 Date



Index No. 74-1