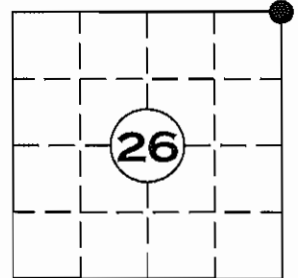


# U.S. PUBLIC LAND SURVEY MONUMENT RECORD

NOTE: THIS FORM IS INTENDED AND DESIGNED TO FULFILL ALL REQUIREMENTS OF WISCONSIN ADMINISTRATIVE CODE CHAPTER A-E 7.08 U.S. PUBLIC LAND SURVEY MONUMENT RECORD (3) (a)(b)(c)(d)(e)(f)(g)(h)(i). AN ADDITIONAL SHEET MAY BE ADDED IF NECESSARY TO CONFIRM WITH SAID REQUIREMENTS.

(a) CORNER LOCATION:  
 NORTHEAST CORNER  
 SECTION 26, TOWNSHIP 35 NORTH, RANGE 5 EAST  
 TOWN OF WILSON LINCOLN COUNTY  
 LINCOLN COUNTY COORDINATES:  
 NORTHING: 237755.500  
 EASTING: 359677.583



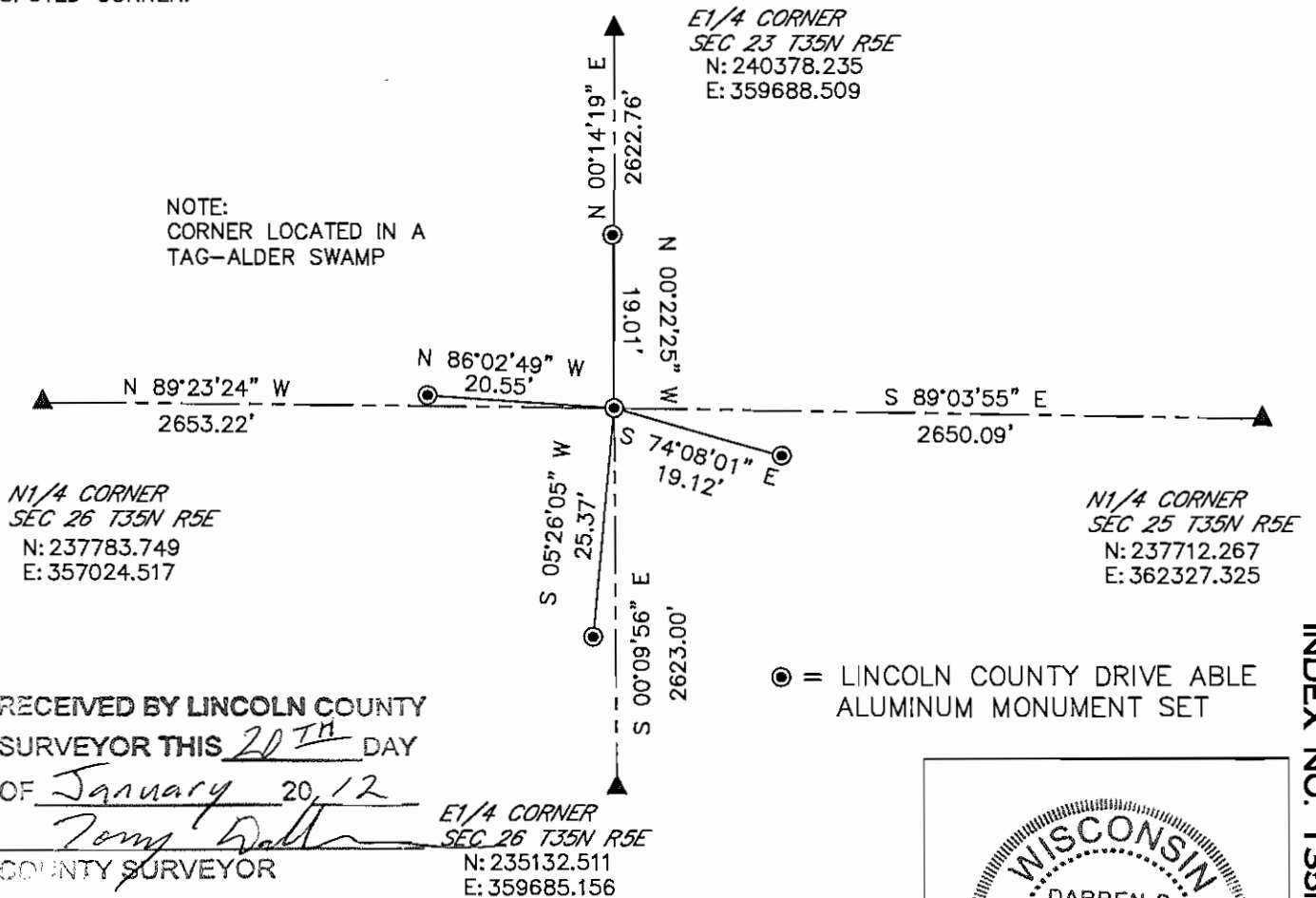
(b) HISTORY OF ORIGINAL CORNER:  
 ORIGINAL SURVEYOR:  
 JOSEPH H. JENKINS SEPT. 1862 - OCT. 1862  
 SPRUCE 7 S 48' E 135 LINKS

(f)(g)(h) DESCRIPTION OF MONUMENT FOUND AT THIS CORNER AND IF IT WAS ACCEPTED STATE ALL EVIDENCE (MATERIAL, TESTIMONIAL, OCCUPATIONAL, PLATS, RECORDS, OTHER MONUMENTS) USED AS A BASIS FOR ESTABLISHING LOCATION. IF REESTABLISHED THROUGH LOST CORNER PROPORTIONATE METHODS, INDICATE ALL MONUMENTS, DISTANCES, AND DIRECTIONS USED TO ESTABLISH. INDICATE TYPE OF MONUMENT AND SIGN POST FOUND OR SET.

30 DECEMBER 2011, BOUNDARY SURVEYS FOR OWENS-ILLINOIS FOREST PRODUCTS DATED 1963-1972 REFERENCE THIS CORNER BEING IN BY OTHERS BUT DOES NOT TIE IT WITH A DISTANCE. EXTENSIVE SEARCH OF AREA REVEALED NO EVIDENCE OF CORNER. TALKED WITH LONG TIME RESIDENTS AND LAND OWNERS KARL TYLER AND JIM CALLAHAN, THEY DID NOT RECALL EVER FINDING THIS CORNER OR KNOWING OF ITS EXISTENCE.

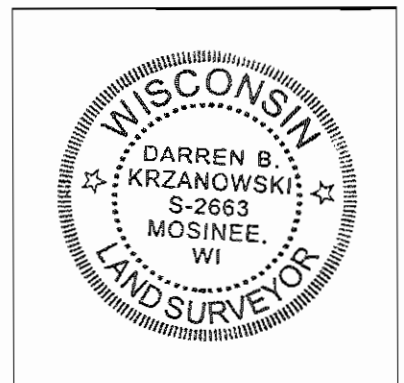
18 JANUARY 2012; SET 5ft. LINCOLN COUNTY ALUMINUM DRIVE ABLE MONUMENT BY DOUBLE PROPORTIONATE MEASUREMENT AND FOUR NEW WITNESS MONUMENTS.

(c)(d)(e) PLAN VIEW OF CORNER WITH TIES TO AT LEAST FOUR WITNESSES. IF IN DISAGREEMENT WITH PREVIOUSLY ESTABLISHED CORNER, SHOW THE DISTANCE BETWEEN THE TWO CORNERS AND ALSO INDICATED THE TIE TO THE DISPUTED CORNER.



I DARREN B. KRZANOWSKI, REGISTERED LAND SURVEYOR NO. 2663, HEREBY CERTIFY THAT THE CORNER LOCATION ON THIS RECORD WAS REFERENCED BY ME OR UNDER MY DIRECTION AND CONTROL AND THAT THIS U.S. PUBLIC LAND SURVEY MONUMENT RECORD IS COMPLETE TO THE BEST OF MY KNOWLEDGE AND BELIEF.

Darren Krzanowski  
 DARREN B. KRZANOWSKI, RLS 2663  
 DATED THIS 19TH DAY OF JANUARY, 2012



INDEX NO. T35N R5E Q21









