

CERTIFIED LAND CORNER RESTORATION

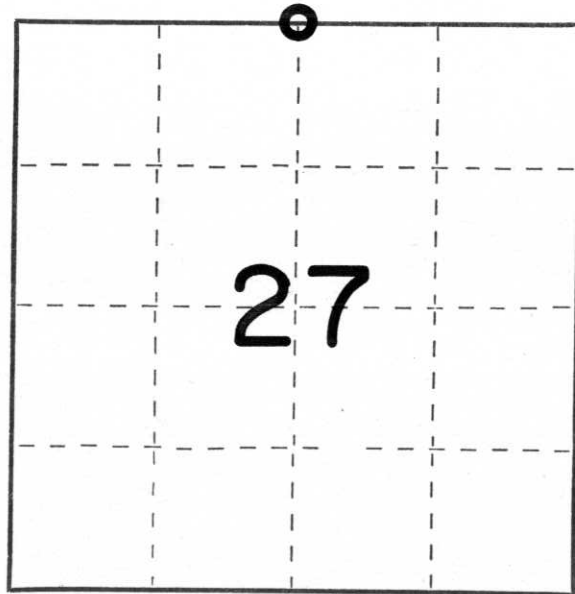
Index No. Q-15

State of Wisconsin }
County of Lincoln } ss.

I Lester J. Schmit, do hereby certify that on the 8th day of November 1984, I found evidence of the North 1/4 corner of Section 27 Township 35, North, Range 5 East, Fourth, Principal Meridian, as described hereon; and that from this evidence I established a new monument and accessories as described hereon to perpetuate the original location of this corner.

Resident witnesses:

.....
.....
.....

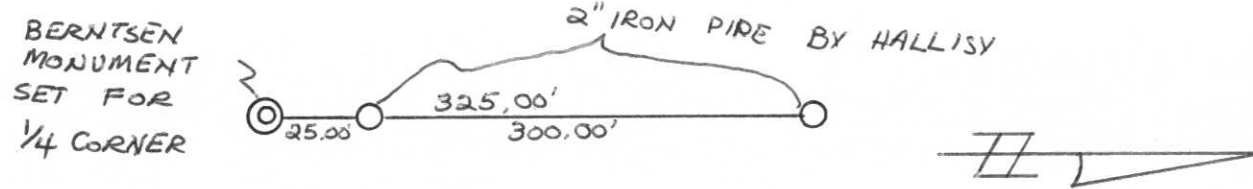


○ = Corner monument restored.

History of original corner establishment:

Surveyor: Joseph W. Jenkins
Date: 27 September 1862
Monumentation: Wood Post
Witnesses: Birch 8, S 70° E, 17 links
Birch 6, N 40° W, 13 links

Description of corner evidence found: Found no monument in for the corner. On a retracement of a survey done by Ray Hallisy (S685), reset corner location by the extension southerly of 25.00' from the pipe set by Hallisy. See diagram below:



Description of monument and accessories I established to perpetuate the original location of this corner.

Set Berntsen monument for the corner. See reverse side for diagram.

Witnessed by: 14" norway pine, N 57° E, 36.10'
13" norway pine, S 16° E, 34.31'
9" white pine, S 42° W, 49.06'
16" norway pine, N 52° W, 62.78'

Dated at Tomahawk, Wis., this 11th day of November, 1984.

Signature Lester J. Schmit Title Land Surveyor Registration No. S-1192
(County Surveyor, Registered Land Surveyor, or other duly authorized official)

Office of Register of Deeds, County of....., I hereby certify that the within instrument was filed in this office for record on the.....day of....., 19..... at.....o'clock..... M.

.....
(Register of Deeds)
By.....Deputy