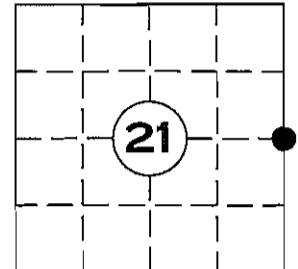


# U.S. PUBLIC LAND SURVEY MONUMENT RECORD

NOTE: THIS FORM IS INTENDED AND DESIGNED TO FULFILL ALL REQUIREMENTS OF WISCONSIN ADMINISTRATIVE CODE CHAPTER A-E 7.08 U.S. PUBLIC LAND SURVEY MONUMENT RECORD (3) (a)(b)(c)(d)(e)(f)(g)(h)(i). AN ADDITIONAL SHEET MAY BE ADDED IF NECESSARY TO CONFIRM WITH SAID REQUIREMENTS.

(a) CORNER LOCATION:  
 SECTION 21, TOWNSHIP 35 NORTH, RANGE 5 EAST  
 TOWN OF WILSON, LINCOLN COUNTY  
 LINCOLN COUNTY COORDINATES:  
 NORTHING: 240512.385  
 EASTING: 349158.427



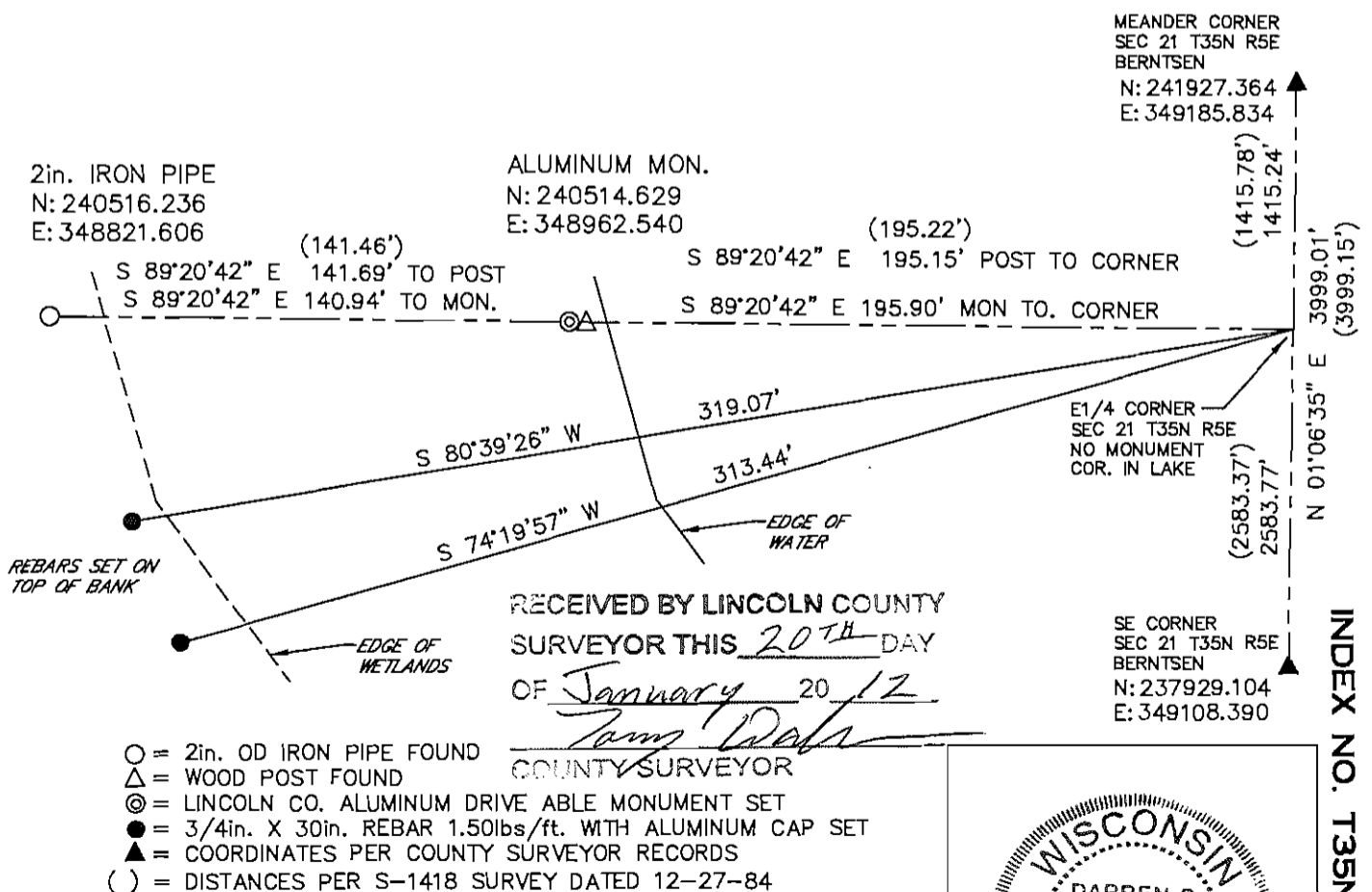
(b) HISTORY OF ORIGINAL CORNER:  
 ORIGINAL SURVEYOR:  
 JOSEPH H. JENKINS SEPT. 1862 - OCT. 1862

(f)(g)(h) DESCRIPTION OF MONUMENT FOUND AT THIS CORNER AND IF IT WAS ACCEPTED STATE ALL EVIDENCE (MATERIAL, TESTIMONIAL, OCCUPATIONAL, PLATS, RECORDS, OTHER MONUMENTS) USED AS A BASIS FOR ESTABLISHING LOCATION. IF REESTABLISHED THROUGH LOST CORNER PROPORTIONATE METHODS, INDICATE ALL MONUMENTS, DISTANCES, AND DIRECTIONS USED TO ESTABLISH. INDICATE TYPE OF MONUMENT AND SIGN POST FOUND OR SET.

12-27-84, S-1418 REFERENCED THIS CORNER IN A BOUNDARY SURVEY FOR OWENS-ILLINOIS FOREST PRODUCTS USING A TRANSIT & EDM.

30 DECEMBER 2011: FOUND IRON PIPE AND WOOD POST CALLED FOR IN S-1418 BOUNDARY SURVEY DATED 12-27-84. COMPUTED CORNER LOCATION BY INTERSECTING IRON PIPE AND WOOD POST WITH SOUTHEAST CORNER AND MEANDER CORNER. LOCATION FIT S-1418 CALLED FOR DISTANCES WELL.

(c)(d)(e) PLAN VIEW OF CORNER WITH TIES TO AT LEAST FOUR WITNESSES. IF IN DISAGREEMENT WITH PREVIOUSLY ESTABLISHED CORNER, SHOW THE DISTANCE BETWEEN THE TWO CORNERS AND ALSO INDICATED THE TIE TO THE DISPUTED CORNER.



I DARREN B. KRZANOWSKI, REGISTERED LAND SURVEYOR NO. 2663, HEREBY CERTIFY THAT THE CORNER LOCATION ON THIS RECORD WAS REFERENCED BY ME OR UNDER MY DIRECTION AND CONTROL AND THAT THIS U.S. PUBLIC LAND SURVEY MONUMENT RECORD IS COMPLETE TO THE BEST OF MY KNOWLEDGE AND BELIEF.

*Darren Krzanowski*  
 DARREN B. KRZANOWSKI RLS 2663  
 DATED THIS 5TH DAY OF JANUARY, 2012



INDEX NO. T35N R5E 013





