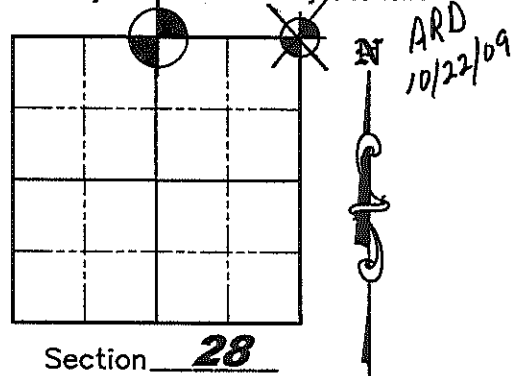


U.S. PUBLIC LAND SURVEY MONUMENT RECORD

NOTE: This form is intended and designed to fulfill all requirements of Wisconsin Administrative Code, Chapter A-E 7 .08 U.S. Public Land Survey Monument Record (3)(a)(b)(c)(d)(e)(f)(g)(h)(i). An additional sheet may be added if necessary to conform with said requirements.

(a) Corner location: Township 35 North
 Range 5 East
 Town of Wilson
 County of Lincoln
 Lincoln County Coordinates N 237991.077
 E 346402.121



(b)(f)(g)(h) Description of monument found at this corner and if it was accepted, state all evidence (material, testimonial, occupation, plats, records, other monuments) used as a basis for accepting. If not accepted or if nothing was found, state evidence used as a basis for establishing location. If reestablished through lost corner proportionate methods, indicate all monuments, distances and directions used to establish. Indicate type of monument found or set and sign post.

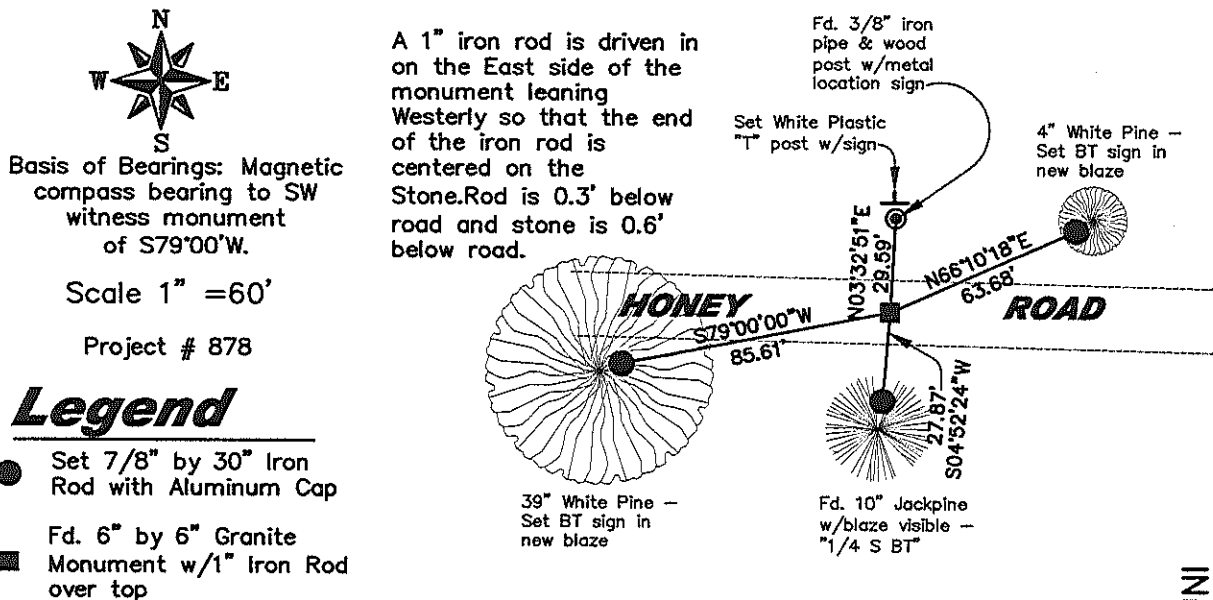
October 3, 1862 - Joseph H. Jenkins set wood Section post with bearing trees: White Pine 12" - N78°E, 28 links; Birch 8" S38°W, 40 links.

Unknown Date - Granite Monument and witness post set.

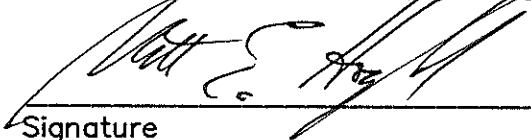
June 10, 1987 - U.S. Public Land Survey Monument Record by Lester Schmit, he "Found a 6" x 6" granite Monument for the corner with an iron rod bent so that the top was over the center of the granite. Also a 6" diameter green and white location post is 30' North of the corner" He left the granite monument and iron rod in for the corner - set witnesses: 3/8" iron pipe, N0°14'E, 29.55'; Jack Pine - N36°15'E, 25.21'; White Pine - S36°E, 25.72'; Jack Pine, S1°W, 29.00'.

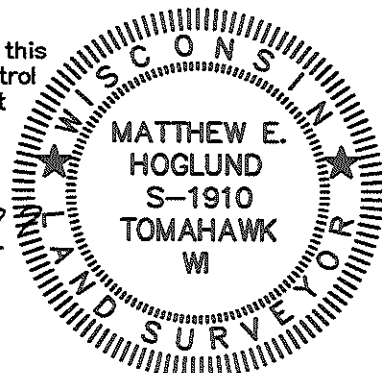
July-September, 2009 - Matthew E. Hoglelund found granite monument with a 1" iron rod bent over the center of the monument from the East. Witnesses - found Jackpine BT to the S. and 3/8" iron pipe to North - just South of wood location post, other 2 witnesses now gone. (Note that the granite stone monument with a chiseled "x" on top and the wood location post are consistent with monumentation by Francis X. Fox, former Lincoln County Surveyor, based on my extensive experience with retracing his work over the years.) Took static post-processed GPS measurements to establish Lincoln County Coordinates and set new witnesses as shown below.

(c)(d)(e) Plan view of corner with ties to at least 4 witness monuments. If in disagreement with previously established corner, show the distances between the two corners and also indicate the ties to the disputed corner.



(i) I, Matthew E. Hoglelund, certify that the corner location on this record was determined by me under my direction and control and that this U.S. Public Land Survey Monument is correct and complete to the best of my knowledge and belief.


 Signature
 10/21/2009
 Date



INDEX NO. Q-11

U.S. PUBLIC LAND SURVEY MONUMENT RECORD

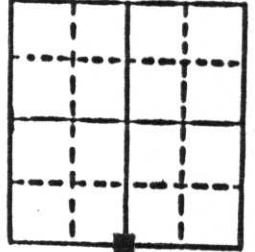
Note: This form is intended and designed to fulfill all requirements of Wisconsin Administrative Code, Chapter A-E 5.02, U.S. Public Land Survey Monument Record (3) (a) (b) (c) (d) (e) (f) (g) (h) (i). An additional sheet may be added if necessary to conform with said requirements.

(a) Corner location: Township 35 North

Range 5 East

Town Wilson

County Lincoln

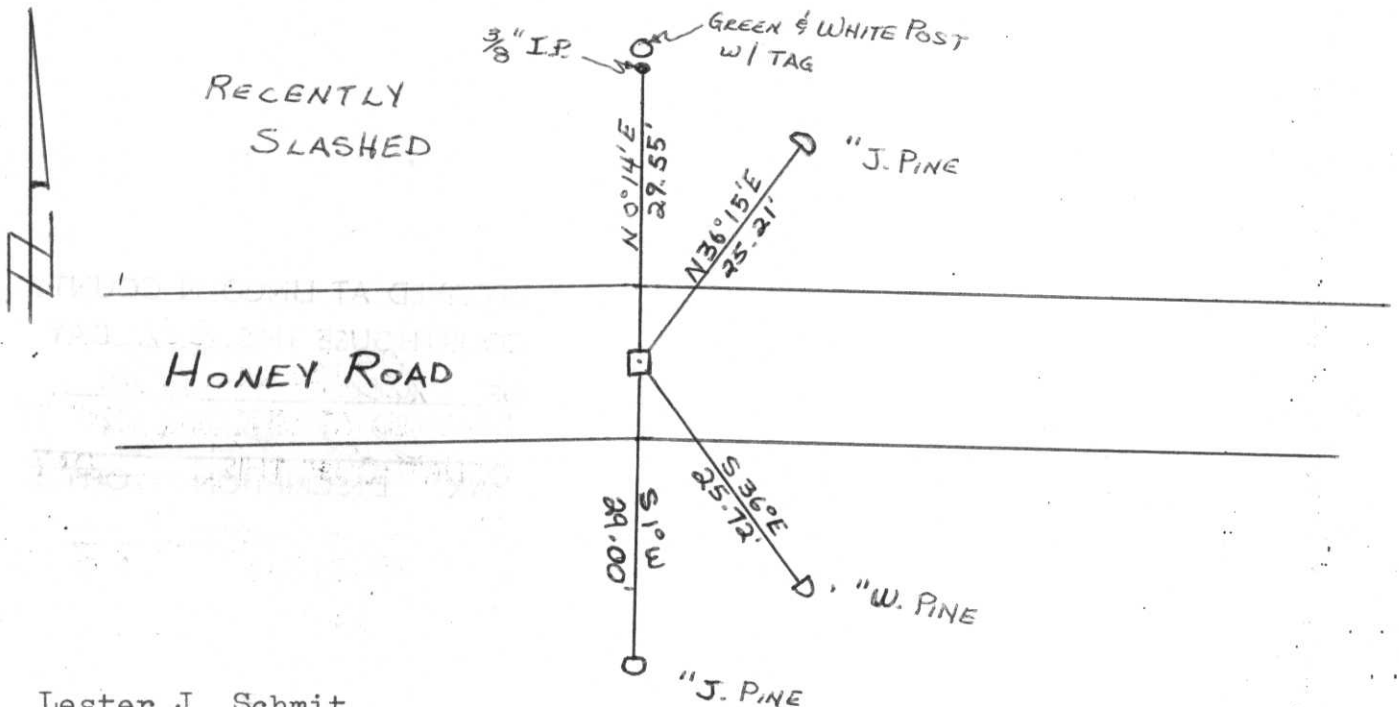


Section 21

b) (f) (g) (h) Description of monument found at this corner and if it was accepted, state all evidence (material, testimonial, occupational, plats, records, other monuments) used as a basis for accepting. If not accepted or if nothing was found, state evidence used as basis for establishing location. If reestablished through lost corner proportionate methods, indicate all monuments, distances and directions used to establish.

Original Gov't. Survey: Oct. 1862 by Joseph H. Jenkins, set wood post for corner with bearings, white pine 12 N 78° E 28 links & birch 8 S 48° W 40 links. I found a 6" x 6" granite monument for the corner with an iron rod bent so that the top was over the centre of the granite.

c) (d) (e) Plan view of corner with ties to at least 4 witness monuments. If in disagreement with previously established corner, show the distances between the two corners and also indicate the ties to the disputed corner.



(i) I, Lester J. Schmit

(type or print name) certify that the corner location on this record was determined by me or under my direction and control and that this U.S. Public Land Survey Monument Record is correct and complete to the best of my knowledge and belief.

AFFIX
SEAL
HERE

Lester J. Schmit
Signature

10 June 1987
Date

Index No. 9-11