

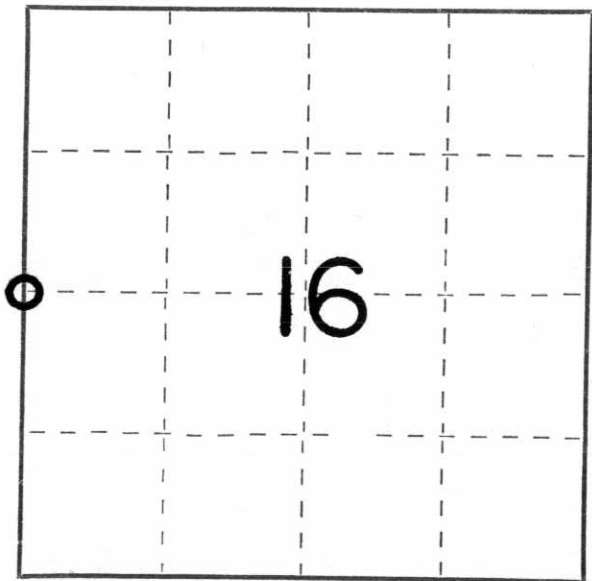
CERTIFIED LAND CORNER RESTORATION

Index No. K-9

State of Wisconsin }
County of Lincoln } ss.

I Lester J. Schmit, do hereby certify that on the 5th day of August, 1982, I ~~was~~ ~~in~~ ~~the~~ ~~presence~~ ~~of~~ ~~the~~ ~~set~~ ~~the~~ ~~West~~ ~~1/4~~ corner of Section 16 Township 35, North, Range 5 East, Fourth, Principal Meridian, as described hereon; and that from this evidence I established a new monument and accessories as described hereon to perpetuate the ~~original~~ location of this corner.

Resident witnesses:
.....
.....
.....

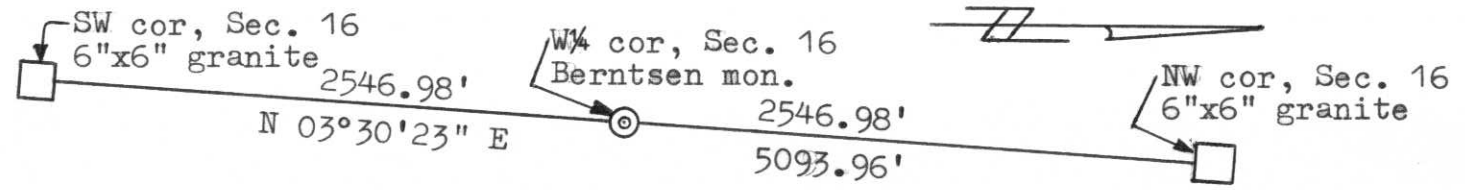


○ = Corner monument restored.

History of original corner establishment:

Surveyor: Joseph H. Jenkins
Date: 18 October 1862
Monumentation: Wood Post
Witnesses: 8" Birch, N 82° W, 10 links
7" Birch, S 53° E, 10 links

Description of corner evidence found: Found nothing for corner. Set corner by a single proportion measurement and half way between the Northwest corner and the Southwest corner of said Section 16.



Description of monument and accessories I established to perpetuate the original location of this corner.

Set 30" Berntsen monument, top being 4" above the surface for corner.

Witnesses: 8" Blasm, N 22° W, 9.58'
7" Quaking Aspen, S 49° E, 5.84'
7" Quaking Aspen, S 1° W, 7.40'
5" Cherry, N 69° W, 21.22'

Dated at Tomahawk, Wis., this 8th day of August, 1982.

Signature Lester J. Schmit Title Land Surveyor Registration No. S-1192
(County Surveyor, Registered Land Surveyor, or other duly authorized official)

Office of Register of Deeds, County of....., I hereby certify that the within instrument was filed in this office for record on the..... day of....., 19..... at..... o'clock..... M..

.....
(Register of Deeds)

By..... Deputy