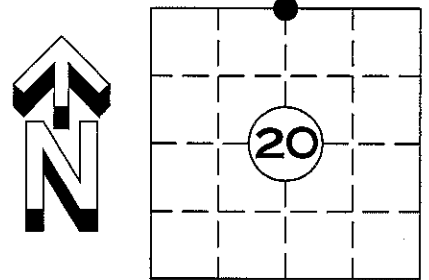


# U.S. PUBLIC LAND SURVEY MONUMENT RECORD

NOTE: THIS FORM IS INTENDED AND DESIGNED TO FULFILL ALL REQUIREMENTS OF WISCONSIN ADMINISTRATIVE CODE CHAPTER A-E 7.08 U.S. PUBLIC LAND SURVEY MONUMENT RECORD (3) (a)(b)(c)(d)(e)(f)(g)(h)(i). AN ADDITIONAL SHEET MAY BE ADDED IF NECESSARY TO CONFIRM WITH SAID REQUIREMENTS.

(a) CORNER LOCATION:  $\frac{N}{4}$  CORNER  
SECTION 20 TOWNSHIP 35 NORTH, RANGE 5 EAST  
TOWN OF WILSON. LINCOLN COUNTY  
LINCOLN COUNTY COORDINATES:  
NORTHING: 243097.184  
EASTING: 341116.344

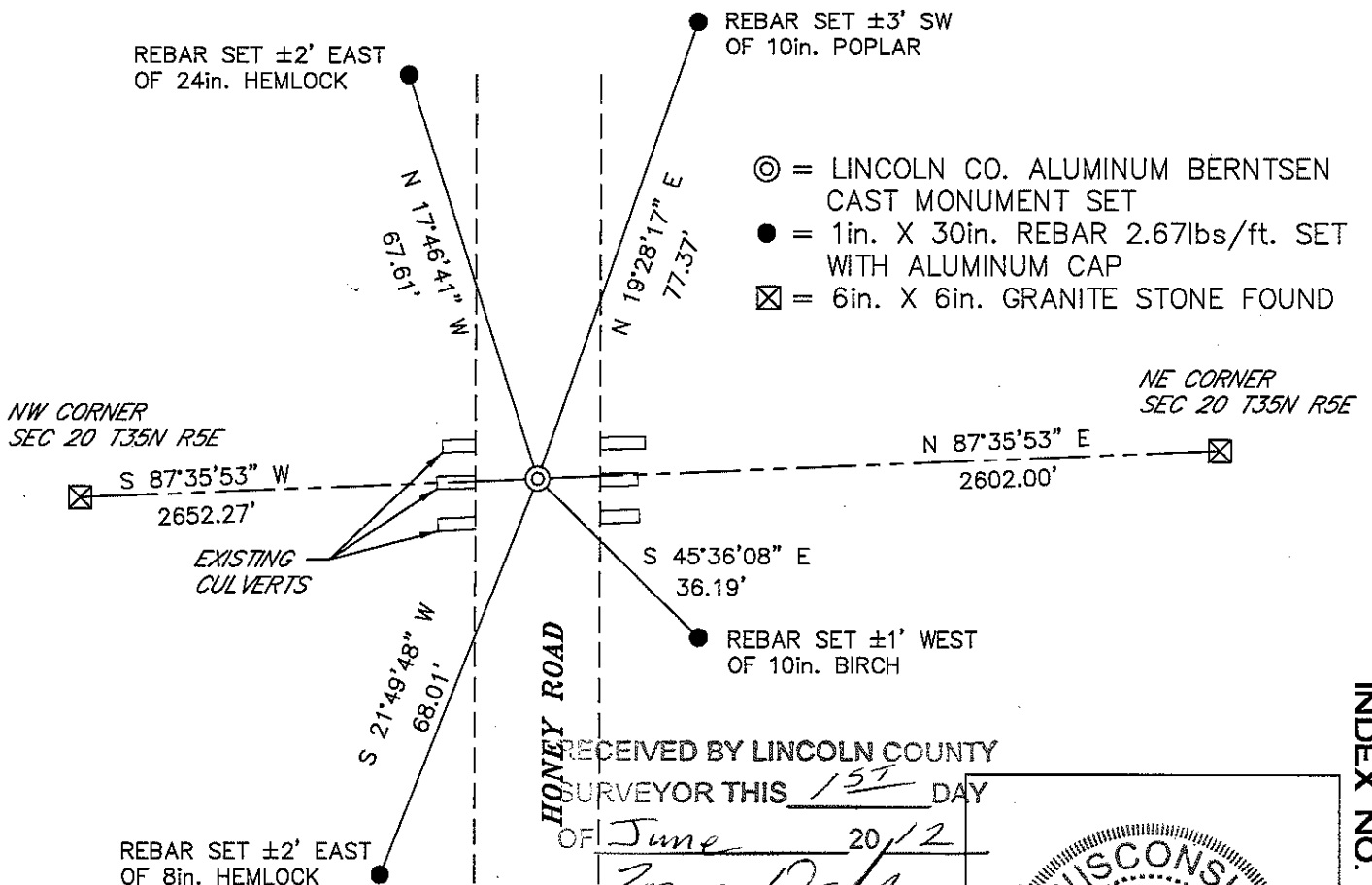


(b) HISTORY OF ORIGINAL CORNER:  
ORIGINAL SURVEYOR: JOSEPH H. JENKINS, SEPT. 1862 – OCT. 1862  
HEMLOCK 10 N 27° W 36 LINKS  
BIRCH 10 S 11° W 39 LINKS

(f)(g)(h) DESCRIPTION OF MONUMENT FOUND AT THIS CORNER AND IF IT WAS ACCEPTED STATE ALL EVIDENCE (MATERIAL, TESTIMONIAL, OCCUPATIONAL, PLATS, RECORDS, OTHER MONUMENTS) USED AS A BASIS FOR ESTABLISHING LOCATION. IF REESTABLISHED THROUGH LOST CORNER PROPORTIONATE METHODS, INDICATE ALL MONUMENTS, DISTANCES, AND DIRECTIONS USED TO ESTABLISH. INDICATE TYPE OF MONUMENT AND SIGN POST FOUND OR SET.

4 APRIL 2012; FOUND NO EVIDENCE OF CORNER. COMPUTED CORNER LOCATION ON LINE BETWEEN THE NORTHEAST SECTION CORNER AND NORTHWEST SECTION CORNER OF SECTION 20 AND USING THE CENTER OF HONEY ROAD HAS BEST EVIDENCE OF CORNER LOCATION.  
DURING HAND EXCAVATION HIT CULVERT  $\pm 2'$  BELOW ROAD SURFACE. SET TOP 1.5' OF LINCOLN CO. ALUMINUM BERNTSEN MONUMENT AT COMPUTED LOCATION AND FOUR NEW WITNESS MONUMENTS

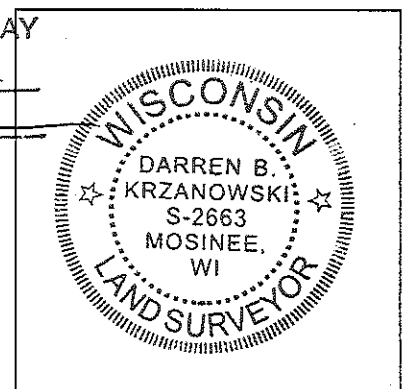
(c)(d)(e) PLAN VIEW OF CORNER WITH TIES TO AT LEAST FOUR WITNESSES. IF IN DISAGREEMENT WITH PREVIOUSLY ESTABLISHED CORNER, SHOW THE DISTANCE BETWEEN THE TWO CORNERS AND ALSO INDICATED THE TIE TO THE DISPUTED CORNER.



RECEIVED BY LINCOLN COUNTY  
SURVEYOR THIS 15<sup>TH</sup> DAY  
OF June 20/12  
*Tom Dahl*  
COUNTY SURVEYOR

I DARREN B. KRZANOWSKI, REGISTERED LAND SURVEYOR NO. 2663, HEREBY CERTIFY THAT THE CORNER LOCATION ON THIS RECORD WAS REFERENCED BY ME OR UNDER MY DIRECTION AND CONTROL AND THAT THIS U.S. PUBLIC LAND SURVEY MONUMENT RECORD IS COMPLETE TO THE BEST OF MY KNOWLEDGE AND BELIEF.

*Darren Krzanowski*  
DARREN B. KRZANOWSKI RLS 2663  
DATED THIS 9TH DAY OF APRIL 2012



INDEX NO. T35N R5E M7









