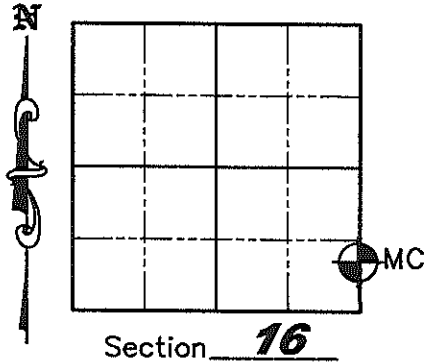


# U.S. PUBLIC LAND SURVEY MONUMENT RECORD

NOTE: This form is intended and designed to fulfill all requirements of Wisconsin Administrative Code, Chapter A-E 7 .08 U.S. Public Land Survey Monument Record (3)(a)(b)(c)(d)(e)(f)(g)(h)(i). An additional sheet may be added if necessary to conform with said requirements.

(a) Corner location: Township 35 North  
 Range 5 East  
 Town of Wilson  
 County of Lincoln  
 Lincoln County Coordinates N: 243904.052  
 E: 349200.460



(b)(f)(g)(h) Description of monument found at this corner and if it was accepted, state all evidence (material, testimonial, occupation, plats, records, other monuments) used as a basis for accepting. If not accepted or if nothing was found, state evidence used as a basis for establishing location. If reestablished through lost corner proportionate methods, indicate all monuments, distances and directions used to establish. Indicate type of monument found or set and sign post.

October 1, 1862 - Joseph H. Jenkins set wood Meander post with bearing trees: Yellow Pine 10" N69°E, 45 links, Cedar 7" S18°E, 21 links

February, 1973 - Northwoods Surveyors, Robert Winat shows "iron pipe in place" at the corner per map "S15B" on file at the Lincoln County Surveyor's Office.

July, 1961 - Northwoods Surveyors, William S. Cameron S#-112 shows "iron pipe" at the corner 1835.4' South of East ¼ Corner per map "S4A" on file at the Lincoln County Surveyor's Office.

Lester Schmit S#1192, shows 2" iron pipe in place at corner on maps: M233A - 3/30/1988, M338B - 9/28/1993, M394B - 5/31/1998, CSM #1171 - 6/28/1998, S163B & S168B - 11/24/1999

November 5, 1964 - Genisot & Assoc., F.R. Wincentsen shows an "MC - iron pipe in place" at the corner 1835.97' South of East ¼ Corner per map "M47B" on file at the Lincoln County Surveyor's Office.

David Lemke S#1845, shows 2" iron pipe in place at corner on maps: Vol. 572, P. 287 - 7/10/1996, CSM #1453 - 1/512001, CSM #1643 - 10/31/2002.

July, 1965 - Northwoods Surveyors, James Griffin shows "iron pipe in place" at the corner per map "M418A" on file at the Lincoln County Surveyor's Office.

June-July, 2009 - Matthew E. Hogle found 2" iron pipe at corner at record distance South of East ¼ corner. Replaced 2" iron pipe with new Berntsen Monument. Took static post-processed GPS measurements to establish Lincoln County Coordinates and set new witnesses as shown below.

(c)(d)(e) Plan view of corner with ties to at least 4 witness monuments. If in disagreement with previously established corner, show the distances between the two corners and also indicate the ties to the disputed corner.



**NOTE:**  
 MC falls N57°54'04"W,  
 3.89' from 4" diameter  
 DNR Brass Cap  
 Benchmark Monument  
 & 6' N. of Powerpole

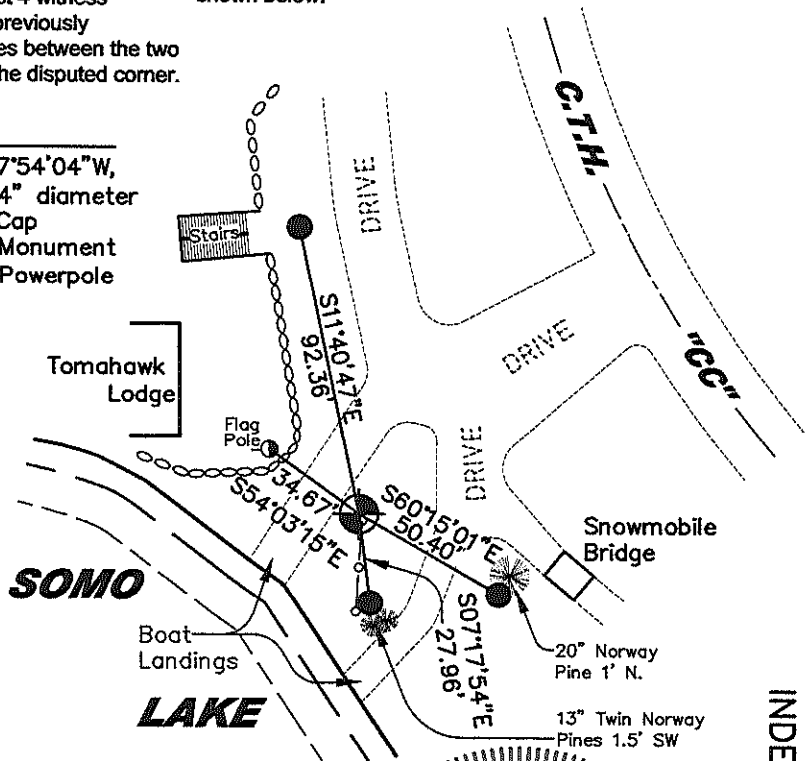
Basis of Bearings: Lincoln County Coordinate System

Scale 1" = 60'

Project # 878

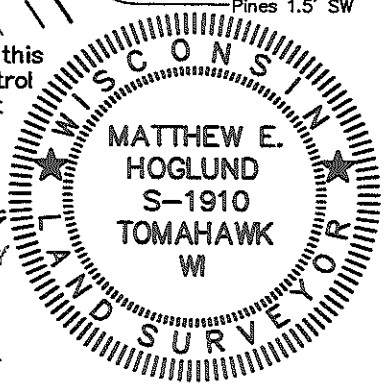
## Legend

- Set 7/8" by 30" Iron Rod with Aluminum Cap
- ⊕ Set Berntsen Monument w/plastic "T" marker post
- Chain Link Fence



(i) I, Matthew E. Hogle, certify that the corner location on this record was determined by me under my direction and control and that this U.S. Public Land Survey Monument is correct and complete to the best of my knowledge and belief.

*Matthew E. Hogle*  
 Signature Date 10/27/2009



Sheet 1 of 1

RECEIVED BY LINCOLN COUNTY SURVEYOR THIS 28<sup>TH</sup> DAY OF October 2009  
*Tony Dahn*  
 COUNTY SURVEYOR

INDEX NO. LM-13