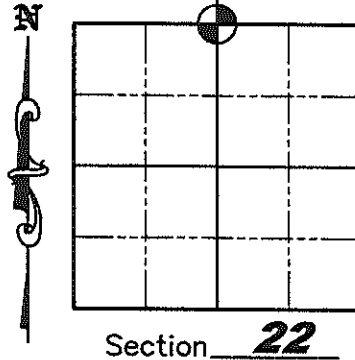


# U.S. PUBLIC LAND SURVEY MONUMENT RECORD

NOTE: This form is intended and designed to fulfill all requirements of Wisconsin Administrative Code, Chapter A-E 7 .08 U.S. Public Land Survey Monument Record (3)(a)(b)(c)(d)(e)(f)(g)(h)(i). An additional sheet may be added if necessary to conform with said requirements.

(a) Corner location: Township 35 North  
 Range 5 East  
 Town of Wilson  
 County of Lincoln  
 Lincoln County Coordinates N: 243073.019  
 E: 351781.529



(b)(f)(g)(h) Description of monument found at this corner and if it was accepted, state all evidence (material, testimonial, occupation, plats, records, other monuments) used as a basis for accepting. If not accepted or if nothing was found, state evidence used as a basis for establishing location. If reestablished through lost corner proportionate methods, indicate all monuments, distances and directions used to establish. Indicate type of monument found or set and sign post.

October 1, 1862 - Joseph H. Jenkins set wood Quarter post with bearing trees: Hemlock 6" S19°E, 40 links, Hemlock 6" N4°W, 21 links

September 2, 1981 - U.S. Public Land Survey Monument Record by Lester Schmit, he "found a 2" iron pipe in the centerline of C.T.H. "CC & 27' westerly of Poplar Drive centerline extended. 30" Bermtsen aluminum monument set 1/2" below surface of blacktop." Witnesses: - PK nail in 4" soft maple, N09°E, 49.40', PK nail in power pole #3505-22E8, S88°E, 238.46', PK nail in power pole #3505-22W7, S02°E, 94.41', PK nail in power pole #3505-22W1, S81°W, 121.51'.

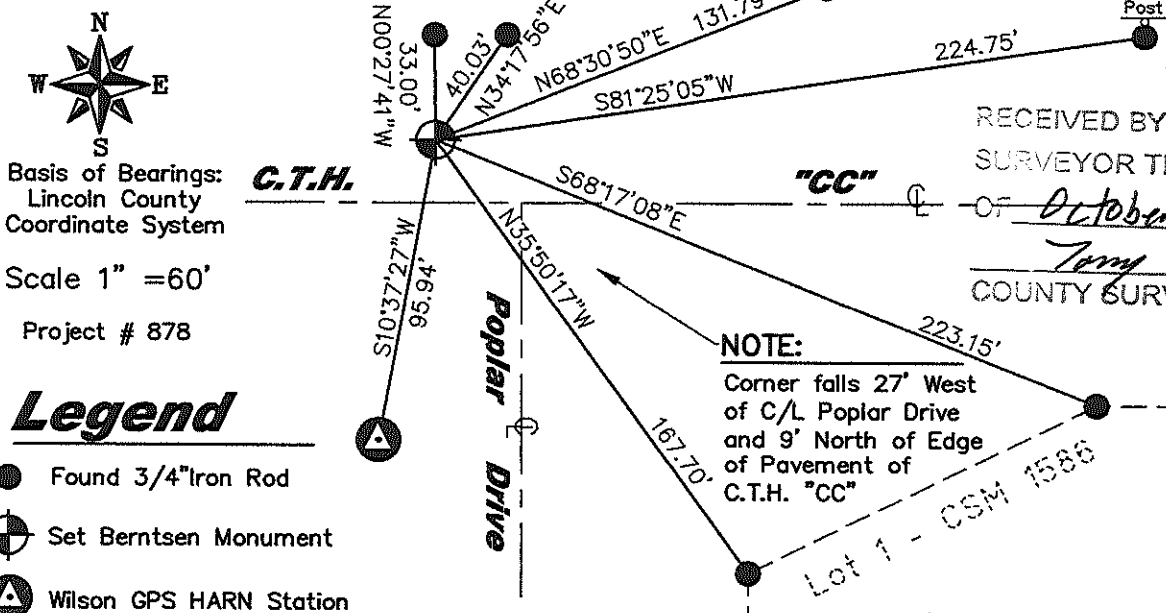
December 27, 1984 - Owens-Illinois survey by William Stuth shows "Iron Pipe or Cap" in place at corner.

March 15, 2002 - C.S.M. No. 1586 by William Nutter shows Bermtsen Monument in place at corner.

December 29, 2008 - U.S. Public Land Survey Monument Record by Keith Walkowski, he "found broken and decaying Bermtsen Monument ±2' below grade. Set a 1" iron pipe above the Bermtsen Monument". Witnesses: - found 3/4" rebar, N00°16'37"W, 33.00'; found 3/4" rebar, N34°29'05"E, 40.09'; found 3/4" rebar, N68°31'30"E, 131.75'; set 7/8" x 30" rebar w/aluminum cap, S31°15'14"E, 99.59'; Wilson GPS Point S10°34'04"W, 95.90'.

June-July, 2009 - Matthew E. Hoglund found 1" x 18" iron pipe loose in depression of obvious dug up area. Also found remnants of salt-decayed Bermtsen Aluminum monument and magnets in soil in and around hole. Located rotted 6" soft maple stump tie from 1981 by Lester Schmit. Found several 3/4" rebar witness monuments from 2008 and irons from CSM 1586. Calculated corner position from irons found and replaced iron pipe with new Bermtsen Monument set 0.5' below the surface. Took static post-processed GPS measurements to establish Lincoln County Coordinates and took witnesses as shown below.

(c)(d)(e) Plan view of corner with ties to at least 4 witness monuments. If in disagreement with previously established corner, show the distances between the two corners and also indicate the ties to the disputed corner.



Basis of Bearings: Lincoln County Coordinate System

Scale 1" = 60'

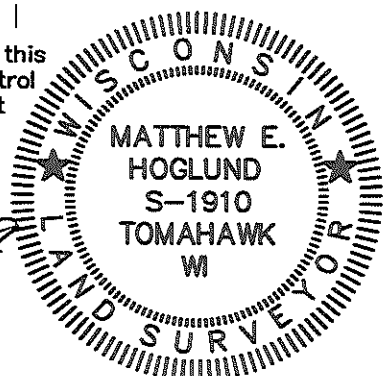
Project # 878

## Legend

- Found 3/4" Iron Rod
- ⊕ Set Bermtsen Monument
- ⊙ Wilson GPS HARN Station

(i) I, Matthew E. Hoglund, certify that the corner location on this record was determined by me under my direction and control and that this U.S. Public Land Survey Monument is correct and complete to the best of my knowledge and belief.

Signature: Matthew E. Hoglund Date: 10/27/2009

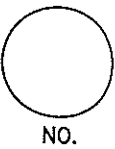


RECEIVED BY LINCOLN COUNTY SURVEYOR THIS 28<sup>TH</sup> DAY OF October 2009  
Tony Decker  
 COUNTY SURVEYOR

INDEX NO. M-15

# LINCOLN COUNTY U.S. PUBLIC LAND SURVEY MONUMENT LOCATION RECORD

CORNER NUMBER \_\_\_\_\_  
 SECTION 15  
 TOWNSHIP 35 NORTH  
 RANGE 5 EAST



LANDMARK  BENCHMARK \_\_\_\_\_ FOUND   
 CORNER IDENTITY: SOUTH 1/4 CORNER BERTSEN MON. SET   
 RE-SET   
 RE-TIED

LINCOLN COUNTY COORDINATE: N: 243072.90  
 E: 351781.59

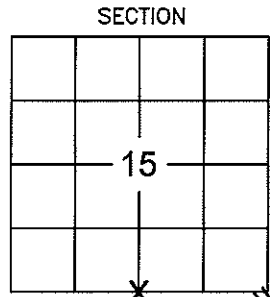
ELEVATION--(FEET): \_\_\_\_\_ DATUM: \_\_\_\_\_

WEATHER: MOSTLY CLOUDY

DATE OF SURVEY: DEC. 11TH, 2008 TEMPERATURE: 15 °F

SURVEY PARTY: K.J.W. / N.J.W.

WILSON  
 CITY, VILLAGE, TOWN



LOCATION (Indicated By)



## BASIS FOR MONUMENT LOCATION:

(DESCRIBE METHOD OF SURVEY AND CORNER AUTHENTICATION)

SEARCHED FOR THE SOUTH 1/4 CORNER USING PREVIOUS TIESHEET AND RIGHT-OF-WAY PLAT FOR CTH "CC". ALL THE PREVIOUS TIES HAD BEEN DESTROYED FROM ROAD CONSTRUCTION. CALCULATED CORNER POSITION USING RIGHT-OF-WAY PLAT AND FOUND BROKEN DECAYING BERTSEN MONUMENT ±2' BELOW GRADE. SET A 1" IRON PIPE ABOVE THE BERTSEN MONUMENT AND PERPETUATED THE CORNER LOCATION AS SHOWN BELOW. CORNER LIES 28.5' WEST OF POPLAR DRIVE AND 19.7' NORTH OF CTH "CC" REFERENCE LINE.

CERTIFIED CORRECT:  
*Keith J. Walkowski*  
 KEITH J. WALKOWSKI  
 Registered Land Surveyor  
 DATE: 12-21-08

FIELD BOOK NO. 19 PAGE NO. 31

COMPANY RIVERSIDE LAND SURVEYING LLC

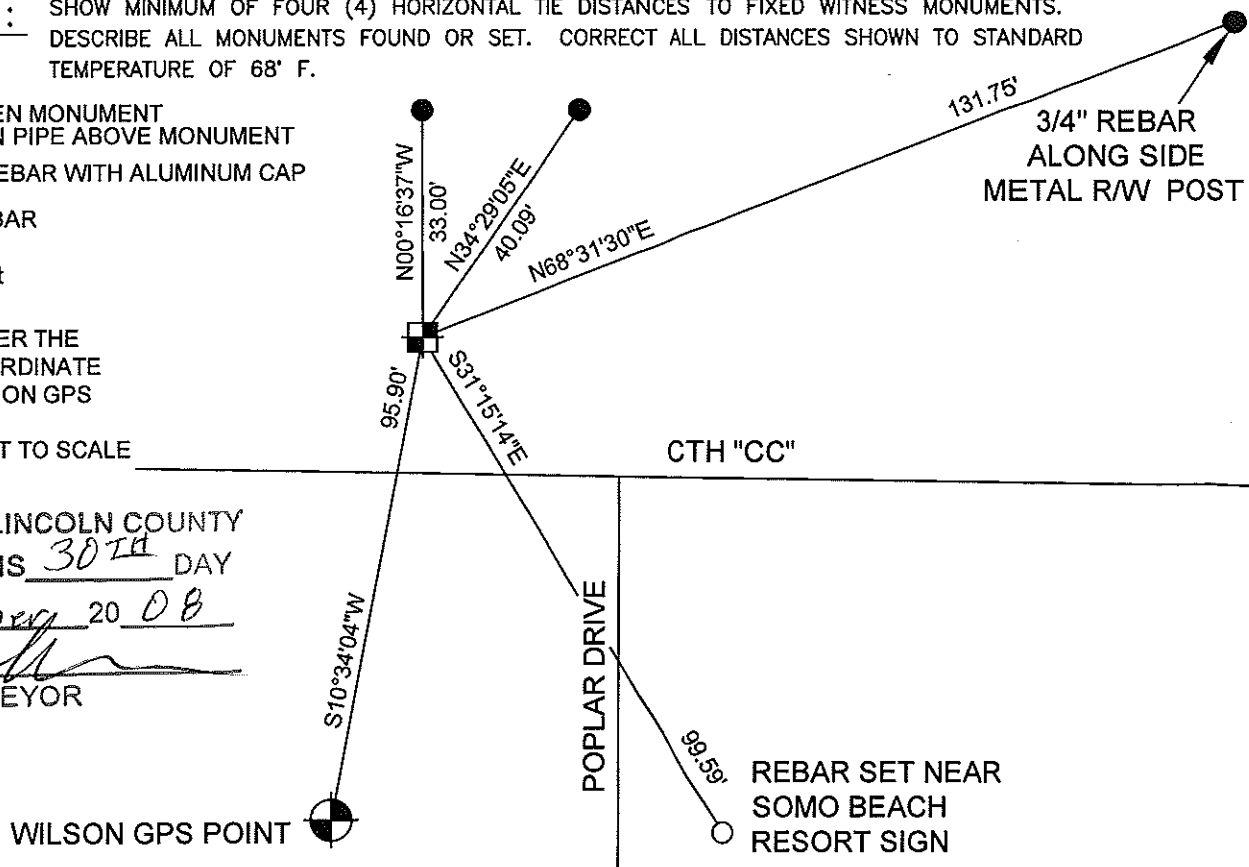
## TIE SKETCH:

SHOW MINIMUM OF FOUR (4) HORIZONTAL TIE DISTANCES TO FIXED WITNESS MONUMENTS. DESCRIBE ALL MONUMENTS FOUND OR SET. CORRECT ALL DISTANCES SHOWN TO STANDARD TEMPERATURE OF 68° F.

- FOUND BERTSEN MONUMENT
- SET 1" O.D. IRON PIPE ABOVE MONUMENT
- SET 3/4" x 30" REBAR WITH ALUMINUM CAP
- FOUND 3/4" REBAR
- Wilson GPS Point

### NOTE

- ALL BEARINGS ARE PER THE LINCOLN COUNTY COORDINATE SYSTEM PER THE WILSON GPS POINT  
 - THIS DRAWING IS NOT TO SCALE



RECEIVED BY LINCOLN COUNTY SURVEYOR THIS 30TH DAY OF December 20 08  
*Tony D...*  
 COUNTY SURVEYOR

CERTIFIED LAND CORNER RESTORATION

Index No. M-15

State of Wisconsin }  
County of Lincoln } ss.

History of original corner establishment:

Surveyor: Joseph H. Jenkins  
Date: October 1862  
Monumentation: Wood Post  
Witnesses: Hemlock 6, S 19° E, 40 links  
Hemlock 6, N 4° W, 21 links

I Lester J. Schmit, do hereby certify that on the 11th day of October, 1976, I found evidence of the South 1/4 corner of Section 15 Township 35, North, Range 5 East, Fourth, Principal Meridian, as described hereon; and that from this evidence I established a new monument and accessories as described hereon to perpetuate the original location of this corner.

Description of corner evidence found:

2" iron pipe in the centre-line of County Trunk Highway "CC" & 27' westerly of Poplar Drive centre-line extended.

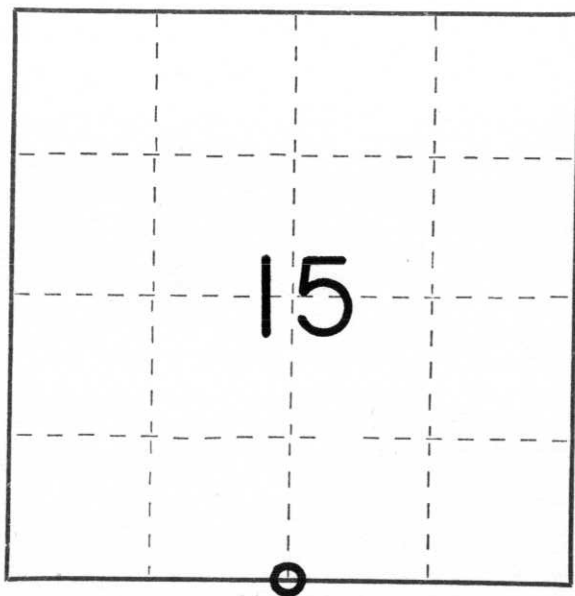
Resident witnesses:

.....  
.....  
.....

Description of monument and accessories I established to perpetuate the original location of this corner.

30" Berntsen aluminum monument set 1/2" below surface of blacktop.

Witnesses: P.K. Nail in 4" soft maple, N 09° E, 49.40'  
P.K. Nail in power pole # 3505-22E8, S 88° E, 238.46'  
P.K. Nail in power pole # 3505-22W7, S 02° E, 94.41'  
P.K. Nail in power pole # 3505-22W1, S 81° W, 121.51'



○ = Corner monument restored.

Dated at Tomahawk, Wis., this 2nd day of September, 1981.

Signature Lester J. Schmit Title Land Surveyor Registration No. S 1192  
(County Surveyor, Registered Land Surveyor, or other duly authorized official)

Office of Register of Deeds, County of....., I hereby certify that the within instrument was filed in this office for record on the..... day of....., 19..... at..... o'clock..... M..

.....  
(Register of Deeds)

By..... Deputy