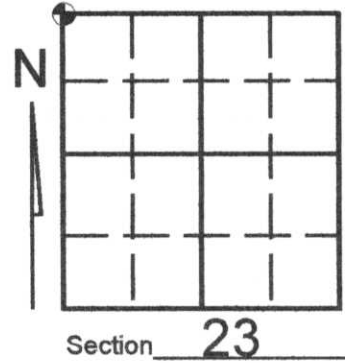


U.S. PUBLIC LAND SURVEY MONUMENT RECORD

Note: This form is intended and designed to fulfill all requirements of Wisconsin Administrative Code, Chapter A-E 7.08 U.S. Public Land Survey Monument Record (3)(a)(b)(c)(d)(e)(f)(g)(h)(i). An additional sheet may be added if necessary to conform with said requirements.

(a) Corner location: Township 35 North
Range 05 East/West

Town/City/Village WILSON
County LINCOLN



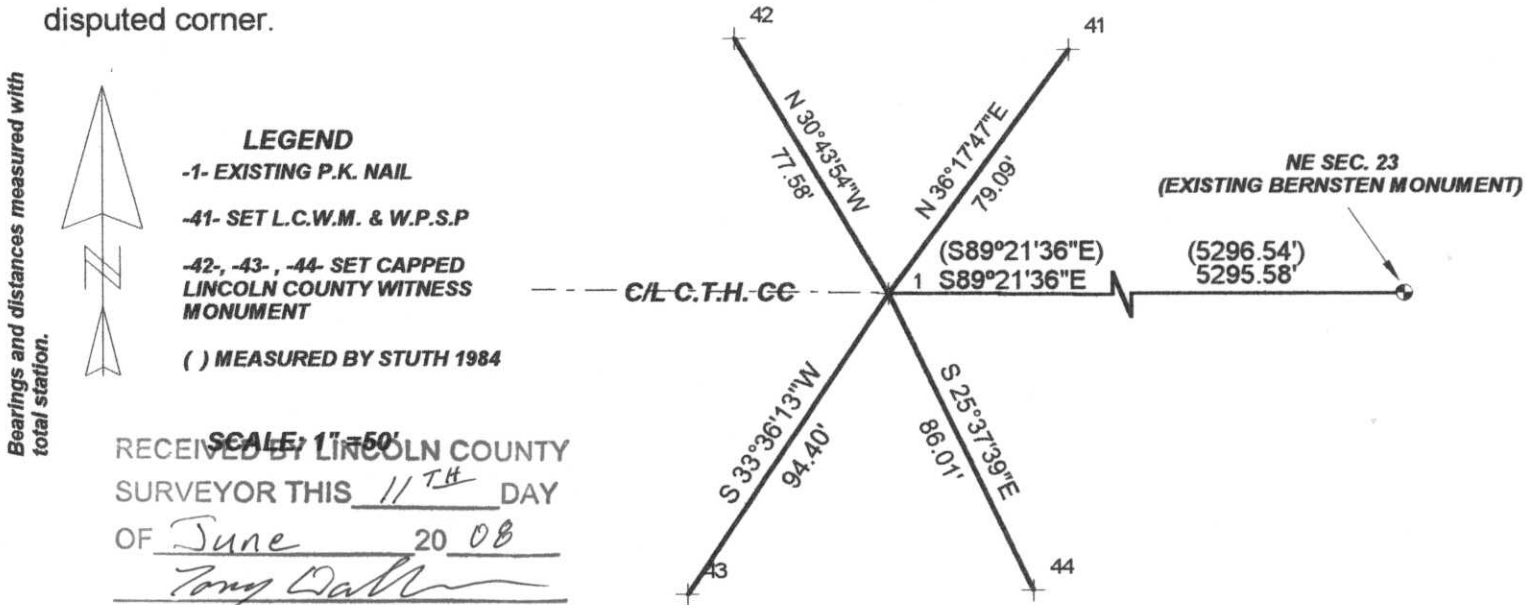
(b) (f) (g) (h) Description of monument found at this corner and if it was accepted, state all evidence (material, testimonial, occupational, plats, records, other monuments) used as a basis for accepting. If not accepted or if nothing was found, state evidence used as basis for establishing location. If reestablished through lost corner proportionate methods, indicate all monuments, distances and directions used to establish. Indicate type of monument found or set and sign post.

See Lincoln County Land Corner Restoration form M-17 for original government witness and monument documentation

-1984- Lester Schmit found iron bar and made witnesses as indicated on Lincoln County Land Corner Restoration form M-17

-2008- Kevin Bixby found P.K. nail and witnessed as shown below

(c) (d) (e) Plan view of corner with ties to at least 4 witness monuments. If in disagreement with previously established corner, show the distances between the two corners and also indicate the ties to the disputed corner.



RECEIVED BY LINCOLN COUNTY SURVEYOR THIS 11TH DAY OF June 20 08
Kevin P. Bixby
COUNTY SURVEYOR
KEVIN P. BIXBY

(i) I, KEVIN P. BIXBY
(type or print name) certify that the corner location on this record was determined by me or under my direction and control and that this U.S. Public Land Survey Monument Record is correct and complete to the best of my knowledge and belief.



Index No. M-17

Kevin P. Bixby Signature 06/09/08 Date

Stamp

CERTIFIED LAND CORNER RESTORATION

Index No. M-17

State of Wisconsin }
County of Lincoln } ss.

I, Lester J. Schmit, do hereby certify that on the 7th day of November, 1984, I found evidence of the Northwest corner of Section 23 Township 35, North, Range 5 East, Fourth, Principal Meridian, as described hereon; and that from this evidence I established a new monument and accessories as described hereon to perpetuate the original location of this corner.

Resident witnesses:

.....
.....
.....



○ = Corner monument restored.

History of original corner establishment:

Surveyor: Joseph W. Jenkins
Date: 26 September 1862
Monumentation: Wood Post
Witnesses: Sugar 12, S 35° E, 12 links
Birch 14, N 21° W, 4 links
Birch 10, N 20° E, 46 links
Sugar 10, N 39° E, 11 links

Description of corner evidence found: Found a 2"x2" iron bar near the centreline of County Trunk Highway "CC" for the corner.

Description of monument and accessories I established to perpetuate the original location of this corner.

Left iron bar in for the corner. See reverse side for diagram.

Witnessed by: 8" white birch, N 21° E, 44.22'
10" red maple, S 35° E, 74.03'
9" jack pine, S 20° W, 60.06'
7" red maple, N 33° W, 51.95'

Dated at Tomahawk, Wis., this 11th day of November, 1984.

Signature Lester J. Schmit Title Land Surveyor Registration No. S-1192
(County Surveyor, Registered Land Surveyor, or other duly authorized official)

Office of Register of Deeds, County of _____, I hereby certify that the within instrument was filed in this office for record on the _____ day of _____, 19____ at _____ o'clock _____ M.

.....
(Register of Deeds)

By _____ Deputy